

**IMPORTANT: Read all instructions prior to installation!
Keep instructions for future reference!**

Project:	
Date of Purchase	



Included Parts List:

- 1. LED Disk Light
- 2. (3) Wire nut
- 3. (2) Mounting Screws

Optional Accessories (Sold Separately)

- 1. Recessed Mounting Kit for 4" recessed housing

IMPORTANT SAFETY & NOTES WARNING

- Before installing, servicing, or performing routine maintenance upon this equipment, follow these general precautions. Read and save these instructions for future reference!
- To reduce the risk of death, personal injury or property damage from fire, electric shock, falling parts, cuts/abrasions, and other hazards read all warnings and instructions included with and on the fixture box and all fixture labels.
- Product should be installed by a certified electrician in accordance with applicable national, state, and local building and electrical codes.
- Failure to properly support the fixture may result in damage or injury, for which the manufacturer does not assume responsibility.
- Supply conductors connecting the fixture must be rated for a minimum of 194°F (90°C).
- To prevent wiring damage or abrasion, do not expose wiring to edges of sheet metal or other sharp objects.
- Do not make or alter any open holes in an enclosure of wiring or electrical components during installation.
- To avoid electrical shock, do not turn on fixture with missing or damaged lens.
- This fixture is rated TYPE NON-IC and is not suitable for direct contact with insulation.
- Do not cover the fixture with any heat insulated materials.

WARNING

- Turn off electrical power at fuse or circuit breaker box before wiring fixture to the power supply!
- Turn off the power when you perform any maintenance.
- Verify that supply voltage is correct by comparing it with the luminaire label information.
- All wiring connections should be capped with UL approved wire connectors.

CAUTION

- Avoid direct eye exposure to the light source while it is on
- Account for small parts and destroy packing material, as these may pose hazardous to children.
- Risk of burn! Disconnect power and allow fixture to cool before handling.

Recommended Tool List (Not included):

1. Screw driver
2. Hammer
3. Electrical Meter

Electrical Specifications

Power	Input voltage	Frequency	Luminous Efficacy	Color Temperature	Operating Temperature	IP Rating
4inch 10W	120V AC	60Hz	82lm/W	2700/3000/3500/4000/5000K	-4~104 F	IP42

Selecting the Color Temperature

Prior to installation, select the desired Color Temperature by toggling the dip switch on the back of the disc light.

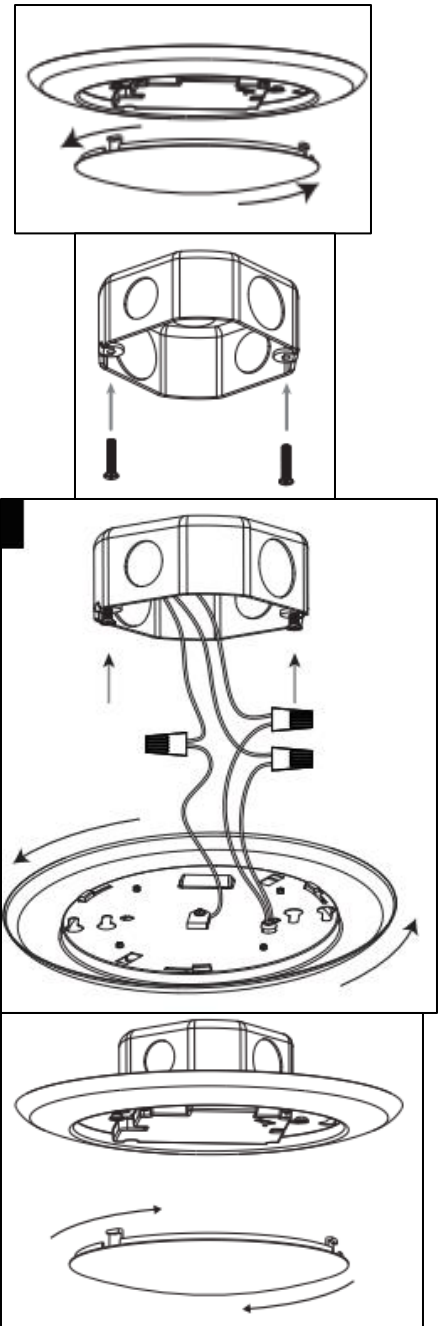
<p>CCT selectable by dip switch</p> <p>5 CCT selectable</p>	<p>Note:</p> <p>Toggle the dip switch on the back of the disc light (A) to select the correlated color temperature (CCT) prior to installation.</p>
---	--

INSTALLATION INSTRUCTIONS

WARNING: Turn off power supply from main circuit breaker first!

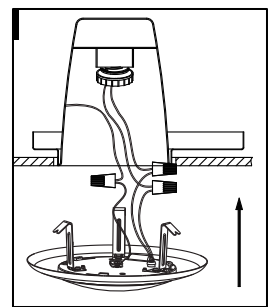
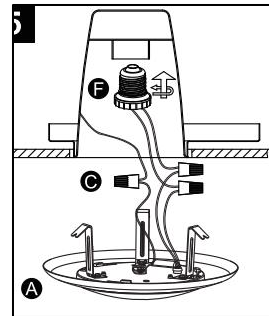
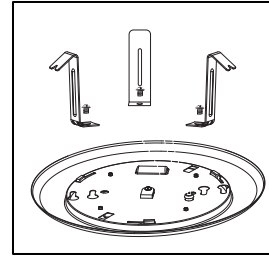
Default Installation (Surface Mounting)

1. Twist the lamp shade counter clockwise to remove lens from the fixture body and set aside.
2. Install the two included screws into junction box and leave 1/4" of the screw exposed to accommodate mounting plate.
3. Wire the fixture by connecting the black wire to the line/hot, white wire to the neutral/common, and ground wire to the designated ground.
4. Attach mounting plate to the junction box by aligning the holes on the mounting plate with the screws on the junction box from step 2.
5. Reattach lamp shade to mounting plate and twist clockwise to lock in place.
6. Turn on power from main circuit breaker.



Recessed Housing Installation (Recessed Mounting kit sold separately)

1. Fasten the three mounting brackets to the fixture body with screws included in recessed mounting kit.
2. Fasten Connect the E26 base whip (F) to the fixture (A) by making wire connections using included wire nuts (C): black to black, white to white, cap off green wire.
3. Screw in E26 base (F) to the socket inside of the recessed housing.
4. Push the disc light up into the recessed housing carefully as to not pinch your fingers or the wires. The mounting brackets from step 1 will hold the fixture in the recessed housing in place by friction.
5. Turn on power from main circuit breaker.



Dimming information

This product is suitable for use in dimming circuits. For 10-100% light control, use with an LED-compatible dimmer (sold separately).

General Troubleshooting

Having trouble? Before contacting the manufacturer, please review below troubleshooting checklist:

- With power supply turned off, ensure all connections are made correctly.
- Make sure the circuit breaker is on and that switch controlling branch circuit is on.

If one of these fix this issue, please consult a certified electrician.

5-Year Limited Warranty

LumeGen (Seller) carries a limited warranty on all of its LED products for manufacturing defects and product failures. The warranty period for commercial products is 5 years from the date of purchase (based on 12 hours per day, 7 days per week of normal commercial use). If LumeGen LED products fail to operate within the warranty period listed above when used as directed, contact LumeGen Customer Service Department to initiate the return process and explain your warranty claim. Failure to follow the procedure as provided by the Customer Service Department will void this warranty.

What you Do: We ask that you call our Customer Service Department at 800-998-6977 to obtain an RMA number and explain the warranty issue. It is the customer's responsibility to pay for the return shipping of the defective product(s) back to the Seller. If the product(s) is found to be defective, the Seller will pay for the shipping costs of the replacement product(s) back to the customer. The returned product(s) must include the RMA # clearly marked on the outside of the packaging, and must include a copy of the original proof of purchase (invoice or sales order).

What we Do: Once we receive the product(s) in question, we will verify the defective claim on the product. If we determine that the defect was not caused by negligence, improper installation, electrical surges, alteration, abuse, unauthorized repair, or disassembly, we will send you a replacement LumeGen Product(s). If an identical replacement is not available for any reason, LumeGen reserves the right, at its sole discretion, to replace the defective product(s) with a different product(s) of equal value that most closely matches the specifications of the original product. Replacement of the defect product(s) is LumeGen's sole warranty obligation, and case or credit refunds will not be offered.

This Limited Warranty is subject to the following conditions:

- Seller is not responsible for incidental and consequential damages that may occur during the return of the product to the seller.
- This warranty is extended only to the original purchaser of the product from Seller. This warranty does not cover any third-party products or devices used in conjunction with the product purchased.
- Seller will not be responsible for any type of removal or re-installation costs, including labor and/or equipment charges or expenses, and will not be responsible for shipping costs or expenses to return the product(s) back to the Seller.
- This warranty covers products purchased in, and used within, the United States or Canada. No agent, distributor, or dealer is authorized to change, modify, or extend the terms of this Limited Warranty on behalf of LumeGen. For warranty or other questions, please call 800-988-6977 or email customerservice@onlinestores.com.