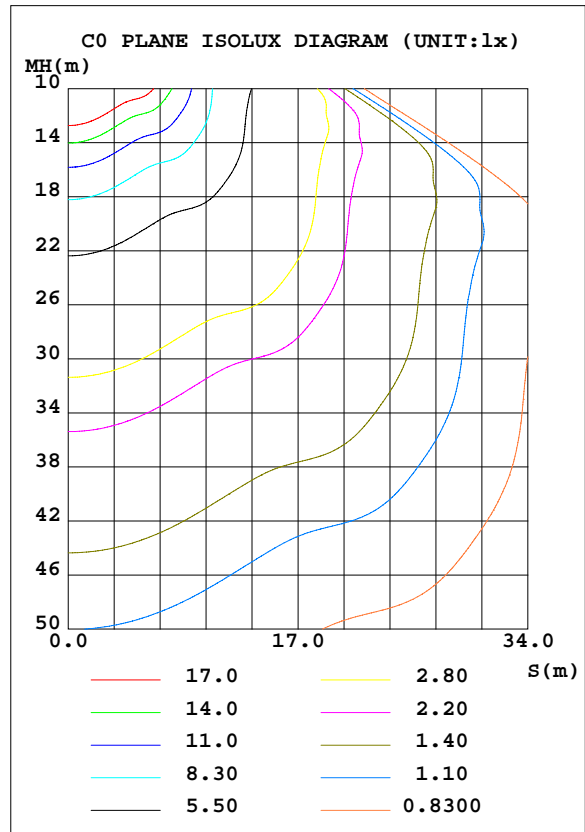
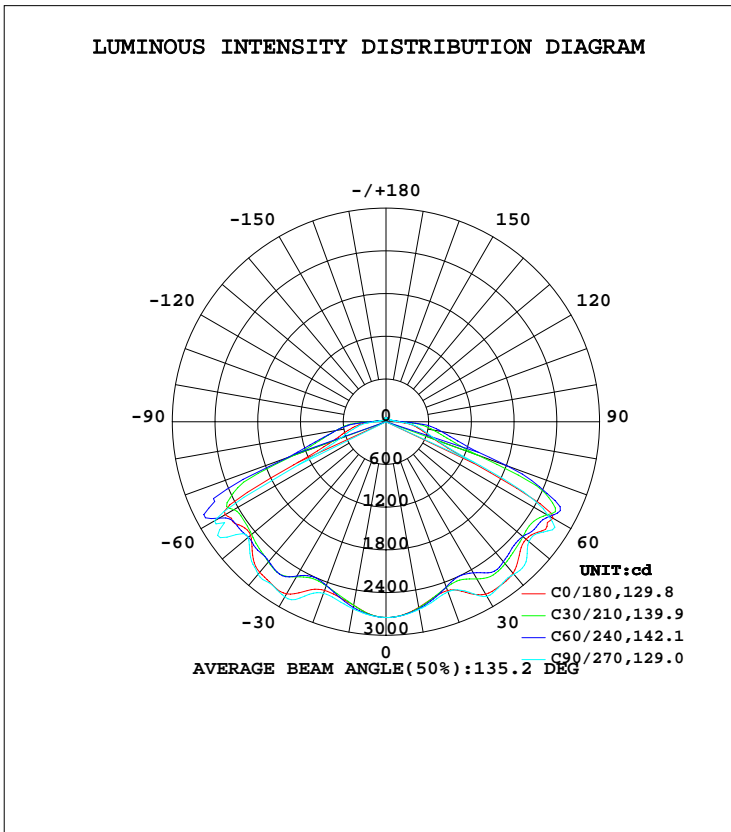


LUMINAIRE PHOTOMETRIC TEST REPORT

Test:U:120.24V I:0.8263A P:99.076W PF:0.9972 Freq:59.98Hz UTHDi:0% ITHDi:0% Lamp Flux:12015.9x1 lm		
NAME: TS-GCP1110-100W-TCP	TYPE:	WEIGHT:
SPEC.:	DIM.:	SERIAL No.:
MFR.:	SUR.:	Shielding Angle:

DATA OF LAMP		PHOTOMETRIC DATA Eff: 121.28 lm/W			
MODEL	TS-GCP1110-100W-TCP	Imax(cd)	2873	S/MH(C0/180)	1.55
NOMINAL POWER(W)	100	LOR(%)	100.0	S/MH(C90/270)	1.57
RATED VOLTAGE(V)	120	TOTAL FLUX(lm)	12016	η UP, DN(C0-180)	2.0,48.5
NOMINAL FLUX(lm)	12015.9	CIE CLASS	DIRECT	η UP, DN(C180-360)	1.7,47.9
LAMPS INSIDE	1	η up(%)	3.7	CIBSE SHR NOM	1.50
TEST VOLTAGE(V)	120	η down(%)	96.3	CIBSE SHR MAX	1.55



C Range: 0 - 360DEG  
 C Interval: 30.0DEG  
 Test Speed: HIGH  
 Temperature:25.3DEG  
 Operators:DAMIN  
 Test Date:2024-06-09

γ Range: 0 - 180DEG  
 γ Interval: 1.0DEG  
 Test System:EVERFINE GO-2000B\_V1 SYSTEM V2.00.426  
 Humidity:65.0%  
 Test Distance:12.550m [K=1.0000]  
 Remarks:

ZONAL FLUX DIAGRAM

ZONAL FLUX DIAGRAM:

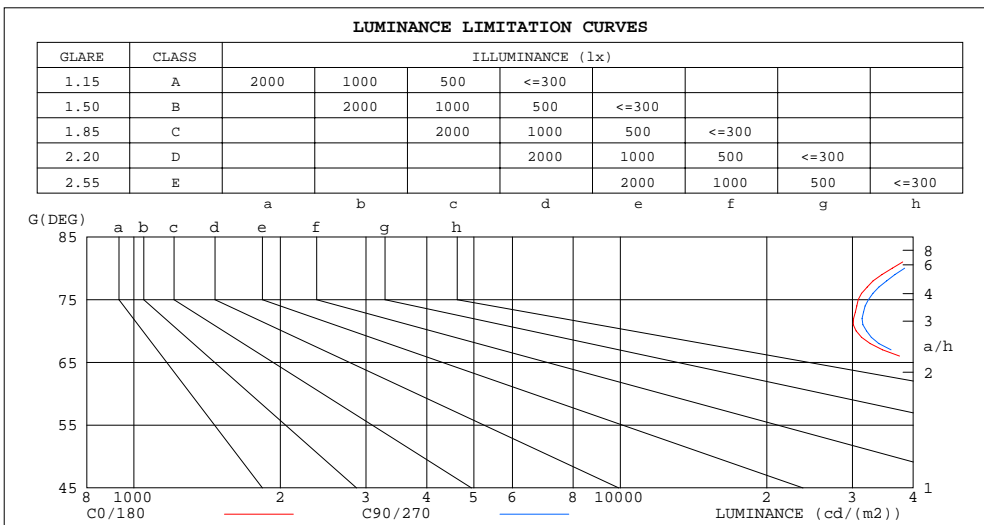
$\gamma$	C0	C45	C90	C135	C180	C225	C270	C315	$\gamma$	$\Phi$ zone	$\Phi$ total	$\Phi$ lum,lamp
10	2648	2661	2677	2641	2619	2632	2668	2656	0- 10	257.4	257.4	2.14,2.14
20	2523	2474	2543	2459	2522	2450	2564	2466	10- 20	724.1	981.5	8.17,8.17
30	2796	2500	2831	2488	2791	2509	2841	2519	20- 30	1167	2148	17.9,17.9
40	2776	2584	2796	2581	2760	2566	2796	2553	30- 40	1667	3815	31.8,31.8
50	2570	2509	2620	2526	2483	2493	2529	2495	40- 50	1998	5813	48.4,48.4
60	2707	2633	2631	2589	2610	2589	2780	2657	50- 60	2301	8114	67.5,67.5
70	730.0	1584	767.8	1623	797.7	1411	682.1	1409	60- 70	2080	10194	84.8,84.8
80	439.8	733.1	466.9	751.9	474.0	713.0	414.6	719.9	70- 80	904.0	11098	92.4,92.4
90	154.1	232.0	165.7	240.0	156.8	231.6	141.7	217.2	80- 90	478.7	11576	96.3,96.3
100	94.34	98.86	98.97	101.8	87.98	84.91	82.56	81.70	90-100	146.5	11723	97.6,97.6
110	74.70	72.51	76.71	73.61	61.04	54.10	58.39	54.06	100-110	80.48	11803	98.2,98.2
120	60.61	57.69	61.37	57.70	45.48	40.75	44.80	41.07	110-120	57.61	11861	98.7,98.7
130	52.63	54.37	52.26	52.79	44.01	40.34	42.09	40.90	120-130	42.81	11904	99.1,99.1
140	54.15	53.44	51.38	51.91	42.96	43.34	42.81	43.99	130-140	36.79	11941	99.4,99.4
150	50.56	54.11	50.50	53.32	46.94	47.84	46.80	47.66	140-150	30.67	11971	99.6,99.6
160	52.14	56.58	53.75	55.69	51.95	52.12	51.31	51.87	150-160	23.95	11995	99.8,99.8
170	54.22	56.34	54.70	55.34	53.71	54.33	53.92	54.00	160-170	15.39	12011	100,100
180	54.45	54.81	54.56	55.03	54.49	54.80	54.55	55.00	170-180	5.220	12016	100,100
DEG	LUMINOUS INTENSITY:cd									UNIT:lm		

C Range: 0 - 360DEG  
 C Interval: 30.0DEG  
 Test Speed: HIGH  
 Temperature:25.3DEG  
 Operators:DAMIN  
 Test Date:2024-06-09

$\gamma$  Range: 0 - 180DEG  
 $\gamma$  Interval: 1.0DEG  
 Test System:EVERFINE GO-2000B\_V1 SYSTEM V2.00.426  
 Humidity:65.0%  
 Test Distance:12.550m [K=1.0000]  
 Remarks:

LUMINANCE LIMITATION CURVES

Test:U:120.24V I:0.8263A P:99.076W PF:0.9972 Freq:59.98Hz UTHDi:0% ITHDi:0%			Lamp Flux:12015.9x1 lm
NAME: TS-GCP1110-100W-TCP	TYPE:	WEIGHT:	
SPEC.:	DIM.:	SERIAL No.:	
MFR.:	SUR.:	Shielding Angle:	



LUMINANCE cd/(m2)		
G (DEG)	C0/180	C90/270
85	50524	52893
80	36241	38402
75	30835	32376
70	30537	32061
65	42921	49543
60	77468	75137
55	66718	67228
50	57197	58215
45	53570	56190

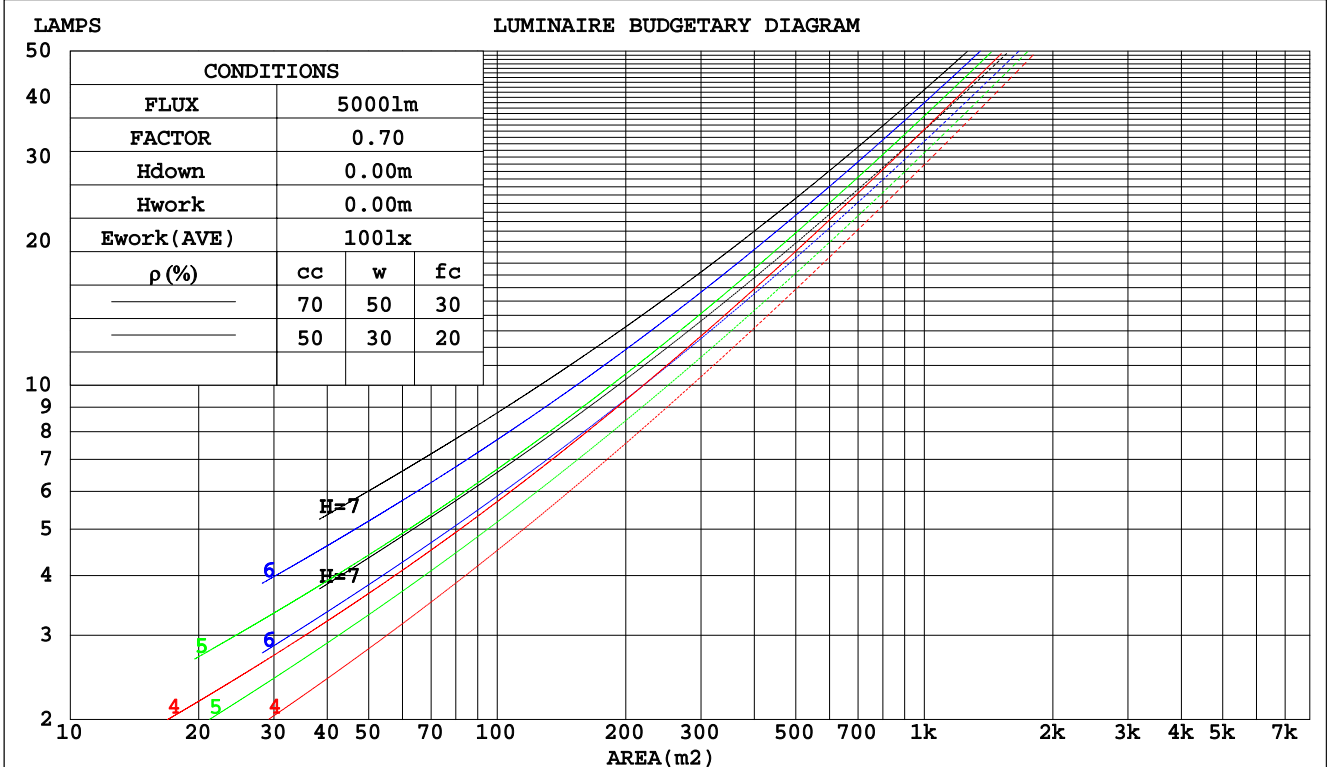
C Range: 0 - 360DEG  
 C Interval: 30.0DEG  
 Test Speed: HIGH  
 Temperature: 25.3DEG  
 Operators: DAMIN  
 Test Date: 2024-06-09

γ Range: 0 - 180DEG  
 γ Interval: 1.0DEG  
 Test System: EVERFINE GO-2000B\_V1 SYSTEM V2.00.426  
 Humidity: 65.0%  
 Test Distance: 12.550m [K=1.0000]  
 Remarks:

CU AND LUMINAIRE BUDGETARY ESTIMATE DIAGRAM

Test:U:120.24V I:0.8263A P:99.076W PF:0.9972 Freq:59.98Hz UTHDi:0% ITHDi:0%			Lamp Flux:12015.9x1 lm
NAME: TS-GCP1110-100W-TCP	TYPE:	WEIGHT:	
SPEC.:	DIM.:	SERIAL No.:	
MFR.:	SUR.:	Shielding Angle:	

pcc	80%			70%			50%			30%			10%			0
	50%	30%	10%	50%	30%	10%	50%	30%	10%	50%	30%	10%	50%	30%	10%	0
pw																
pfc	20%			20%			20%			20%			20%			0
RCR	RCR:Room Cavity Ratio															
	Coefficients of Utilization(CU)															
0.0	1.18	1.18	1.18	1.15	1.15	1.15	1.09	1.09	1.09	1.04	1.04	1.04	.99	.99	.99	.96
1.0	1.01	.96	.91	.98	.93	.89	.93	.89	.86	.88	.85	.83	.84	.82	.79	.77
2.0	.86	.78	.72	.84	.77	.71	.79	.73	.68	.76	.71	.66	.72	.68	.64	.62
3.0	.74	.65	.58	.72	.64	.57	.69	.61	.55	.65	.59	.54	.62	.57	.53	.50
4.0	.64	.55	.47	.63	.54	.47	.60	.52	.46	.57	.50	.45	.54	.48	.44	.41
5.0	.57	.47	.40	.55	.46	.39	.53	.45	.38	.50	.43	.38	.48	.42	.37	.35
6.0	.50	.41	.34	.49	.40	.34	.47	.39	.33	.45	.38	.32	.43	.37	.32	.29
7.0	.45	.36	.29	.44	.35	.29	.42	.34	.28	.40	.33	.28	.39	.32	.28	.25
8.0	.41	.32	.26	.40	.31	.25	.38	.31	.25	.37	.30	.25	.35	.29	.24	.22
9.0	.37	.29	.23	.37	.28	.22	.35	.27	.22	.34	.27	.22	.32	.26	.21	.20
10.0	.34	.26	.20	.34	.26	.20	.32	.25	.20	.31	.24	.20	.30	.24	.19	.17



C Range: 0 - 360DEG  
 C Interval: 30.0DEG  
 Test Speed: HIGH  
 Temperature: 25.3DEG  
 Operators: DAMIN  
 Test Date: 2024-06-09

γ Range: 0 - 180DEG  
 γ Interval: 1.0DEG  
 Test System: EVERFINE GO-2000B\_V1 SYSTEM V2.00.426  
 Humidity: 65.0%  
 Test Distance: 12.550m [K=1.0000]  
 Remarks:

WEC AND CCEC

Test:U:120.24V I:0.8263A P:99.076W PF:0.9972 Freq:59.98Hz UTHDi:0% ITHDi:0%			Lamp Flux:12015.9x1 lm		
NAME: TS-GCP1110-100W-TCP		TYPE:		WEIGHT:	
SPEC.:		DIM.:		SERIAL No.:	
MFR.:		SUR.:		Shielding Angle:	

ρcc	80%			70%			50%			30%			10%			0
ρw	50%	30%	10%	50%	30%	10%	50%	30%	10%	50%	30%	10%	50%	30%	10%	0
ρfc	20%			20%			20%			20%			20%			0
RCR	RCR:Room Cavity Ratio						Wall Exitance Coefficients(WEC)									
0.0																
1.0	.356	.202	.064	.347	.198	.063	.332	.190	.061	.317	.183	.059	.304	.176	.057	
2.0	.327	.179	.055	.319	.176	.054	.305	.170	.053	.292	.164	.051	.280	.159	.050	
3.0	.298	.159	.048	.292	.156	.047	.279	.151	.046	.268	.147	.045	.257	.142	.044	
4.0	.273	.142	.042	.267	.140	.041	.256	.136	.040	.245	.132	.040	.235	.128	.039	
5.0	.250	.127	.037	.245	.126	.037	.235	.122	.036	.225	.119	.035	.217	.116	.035	
6.0	.230	.115	.033	.225	.114	.033	.216	.111	.032	.208	.108	.032	.200	.105	.031	
7.0	.213	.105	.030	.208	.104	.030	.200	.101	.029	.193	.099	.029	.186	.096	.028	
8.0	.197	.096	.027	.194	.095	.027	.186	.093	.027	.179	.091	.026	.173	.089	.026	
9.0	.184	.089	.025	.181	.088	.025	.174	.086	.024	.168	.084	.024	.162	.082	.024	
10.0	.172	.083	.023	.169	.082	.023	.163	.080	.023	.157	.078	.022	.152	.076	.022	

ρcc	80%			70%			50%			30%			10%			0
ρw	50%	30%	10%	50%	30%	10%	50%	30%	10%	50%	30%	10%	50%	30%	10%	0
ρfc	20%			20%			20%			20%			20%			0
RCR	RCR:Room Cavity Ratio						Ceiling Cavity Exitance Coefficients(CCEC)									
0.0	.218	.218	.218	.187	.187	.187	.127	.127	.127	.073	.073	.073	.023	.023	.023	
1.0	.212	.184	.159	.181	.158	.137	.124	.109	.095	.071	.063	.055	.023	.020	.018	
2.0	.205	.160	.122	.176	.138	.106	.120	.095	.074	.069	.055	.043	.022	.018	.014	
3.0	.198	.143	.099	.170	.123	.086	.117	.086	.060	.067	.050	.035	.022	.016	.012	
4.0	.191	.130	.083	.164	.112	.072	.113	.078	.051	.065	.046	.030	.021	.015	.010	
5.0	.184	.120	.073	.158	.104	.063	.109	.073	.045	.063	.043	.027	.020	.014	.009	
6.0	.177	.112	.066	.152	.097	.057	.105	.068	.040	.061	.040	.024	.020	.013	.008	
7.0	.169	.105	.060	.146	.091	.052	.101	.064	.037	.059	.038	.022	.019	.012	.007	
8.0	.163	.099	.056	.140	.086	.049	.097	.061	.035	.056	.036	.021	.018	.012	.007	
9.0	.156	.095	.053	.135	.082	.046	.093	.058	.033	.054	.034	.020	.018	.011	.006	
10.0	.150	.090	.050	.129	.078	.044	.090	.055	.031	.052	.033	.019	.017	.011	.006	

C Range: 0 - 360DEG  
 C Interval: 30.0DEG  
 Test Speed: HIGH  
 Temperature:25.3DEG  
 Operators:DAMIN  
 Test Date:2024-06-09

γ Range: 0 - 180DEG  
 γ Interval: 1.0DEG  
 Test System:EVERFINE GO-2000B\_V1 SYSTEM V2.00.426  
 Humidity:65.0%  
 Test Distance:12.550m [K=1.0000]  
 Remarks:

UGR(Unified Glare Rating) Table

Test:U:120.24V I:0.8263A P:99.076W PF:0.9972 Freq:59.98Hz UTHDi:0% ITHDi:0%						Lamp Flux:12015.9x1 lm				
NAME: TS-GCP1110-100W-TCP			TYPE:			WEIGHT:				
SPEC.:			DIM.:			SERIAL No.:				
MFR.:			SUR.:			Shielding Angle:				
ceiling/cavity	0.7	0.7	0.5	0.5	0.3	0.7	0.7	0.5	0.5	0.3
walls	0.5	0.3	0.5	0.3	0.3	0.5	0.3	0.5	0.3	0.3
working plane	0.2	0.2	0.2	0.2	0.2	0.2	0.2	0.2	0.2	0.2
Room dimensions	Viewed crosswise					Viewed endwise				
x = 2H y = 2H	27.5	29.2	27.9	29.6	30.0	27.8	29.5	28.2	29.9	30.3
3H	28.7	30.2	29.1	30.6	31.1	28.7	30.3	29.1	30.7	31.1
4H	29.0	30.5	29.4	30.9	31.3	29.0	30.5	29.4	30.9	31.3
6H	29.3	30.7	29.8	31.1	31.6	29.3	30.7	29.8	31.1	31.6
8H	29.5	30.8	30.0	31.3	31.8	29.5	30.8	30.0	31.3	31.7
12H	29.7	31.0	30.2	31.4	31.9	29.7	30.9	30.2	31.4	31.9
4H 2H	28.8	30.2	29.2	30.7	31.1	28.9	30.4	29.4	30.8	31.2
3H	30.0	31.3	30.5	31.7	32.2	30.0	31.3	30.5	31.7	32.2
4H	30.4	31.6	30.9	32.0	32.6	30.4	31.5	30.9	32.0	32.5
6H	30.9	31.9	31.4	32.4	32.9	30.9	31.9	31.4	32.4	32.9
8H	31.1	32.1	31.6	32.6	33.1	31.1	32.0	31.6	32.5	33.1
12H	31.4	32.2	31.9	32.8	33.3	31.4	32.2	31.9	32.7	33.3
8H 4H	30.8	31.8	31.3	32.3	32.8	30.8	31.8	31.3	32.3	32.8
6H	31.5	32.3	32.1	32.8	33.4	31.5	32.3	32.1	32.8	33.4
8H	31.9	32.6	32.5	33.2	33.7	31.9	32.6	32.5	33.2	33.7
12H	32.3	33.0	32.9	33.5	34.1	32.3	32.9	32.9	33.5	34.1
12H 4H	30.9	31.8	31.4	32.3	32.8	30.9	31.8	31.4	32.3	32.8
6H	31.7	32.4	32.3	32.9	33.5	31.7	32.4	32.3	32.9	33.6
8H	32.2	32.8	32.8	33.4	34.0	32.2	32.8	32.8	33.4	34.0
CIE190: 2010										

CIE190: 2010  
Area: 0.07 m2

C Range: 0 - 360DEG  
C Interval: 30.0DEG  
Test Speed: HIGH  
Temperature:25.3DEG  
Operators:DAMIN  
Test Date:2024-06-09

γ Range: 0 - 180DEG  
γ Interval: 1.0DEG  
Test System:EVERFINE GO-2000B\_V1 SYSTEM V2.00.426  
Humidity:65.0%  
Test Distance:12.550m [K=1.0000]  
Remarks:

## UTILIZATION FACTORS TABLE

Test:U:120.24V I:0.8263A P:99.076W PF:0.9972 Freq:59.98Hz UTHDi:0% ITHDi:0%			Lamp Flux:12015.9x1 lm
NAME: TS-GCP1110-100W-TCP	TYPE:	WEIGHT:	
SPEC.:	DIM.:	SERIAL No.:	
MFR.:	SUR.:	Shielding Angle:	

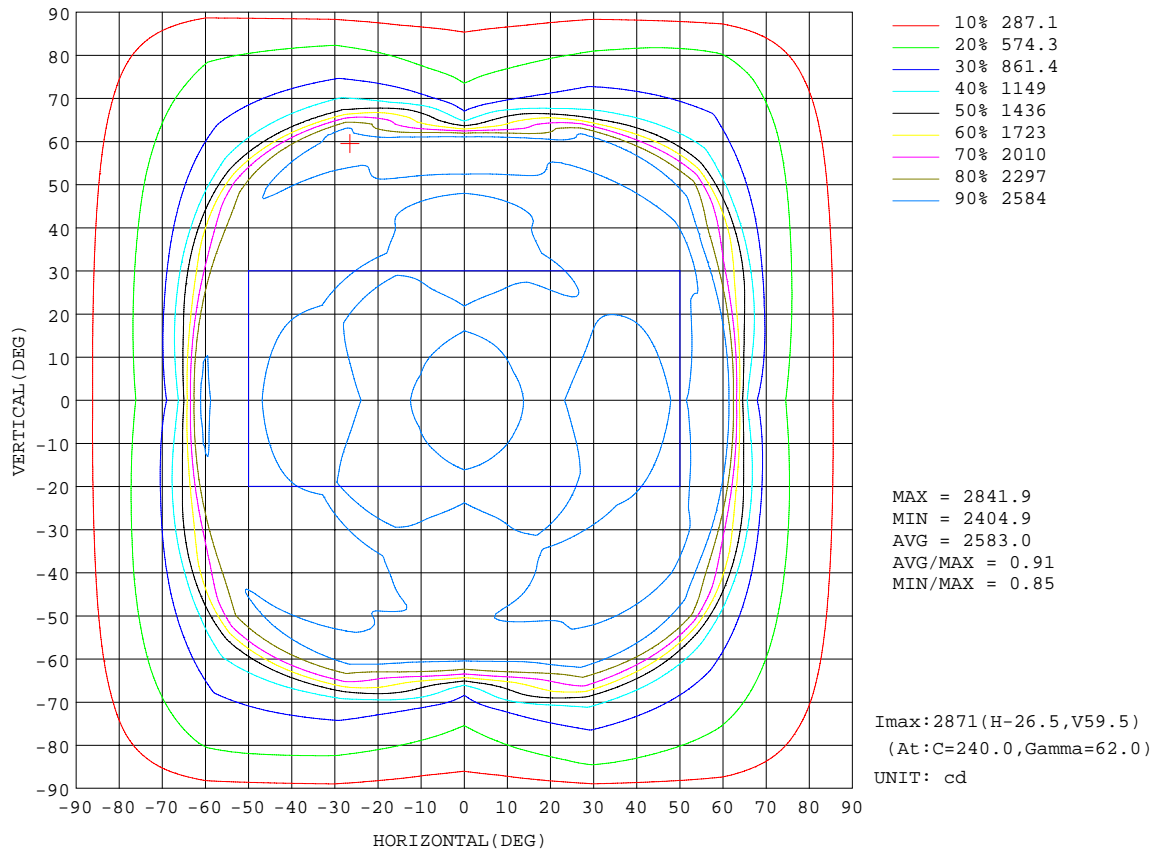
REFLECTANCE										
Ceiling	0.8	0.8	0.8	0.7	0.7	0.7	0.5	0.5	0.5	0
Walls	0.7	0.5	0.3	0.7	0.5	0.3	0.7	0.5	0.3	0
Working plane	0.2	0.2	0.2	0.2	0.2	0.2	0.2	0.2	0.2	0
ROOM INDEX	UTILIZATION FACTORS(PERCENT) $k(RI) \times RCR = 5$									
k = 0.60	50	37	29	49	37	29	48	36	29	22
0.80	60	47	39	59	46	38	57	45	38	30
1.00	69	56	48	67	55	47	65	57	47	39
1.25	76	64	56	75	63	55	71	62	54	46
1.50	82	70	62	80	69	61	76	67	60	51
2.00	90	80	72	87	78	71	83	75	69	60
2.50	94	85	78	92	83	77	87	80	75	65
3.00	98	90	83	96	88	82	91	85	80	70
4.00	103	96	90	100	94	89	95	90	86	75
5.00	106	100	95	103	98	93	98	93	90	79
ROOM INDEX	UF(total)									Direct
According to DIN EN 13032-2 2004			Suspended				SHRNOM = 1.25			

C Range: 0 - 360DEG  
C Interval: 30.0DEG  
Test Speed: HIGH  
Temperature:25.3DEG  
Operators:DAMIN  
Test Date:2024-06-09

$\gamma$  Range: 0 - 180DEG  
 $\gamma$  Interval: 1.0DEG  
Test System:EVERFINE GO-2000B\_V1 SYSTEM V2.00.426  
Humidity:65.0%  
Test Distance:12.550m [K=1.0000]  
Remarks:

ISOCANDELA DIAGRAM

Test:U:120.24V I:0.8263A P:99.076W PF:0.9972 Freq:59.98Hz UTHDi:0% ITHDi:0% Lamp Flux:12015.9x1 lm		
NAME: TS-GCP1110-100W-TCP	TYPE:	WEIGHT:
SPEC.:	DIM.:	SERIAL No.:
MFR.:	SUR.:	Shielding Angle:



C Range: 0 - 360DEG  
 C Interval: 30.0DEG  
 Test Speed: HIGH  
 Temperature: 25.3DEG  
 Operators: DAMIN  
 Test Date: 2024-06-09

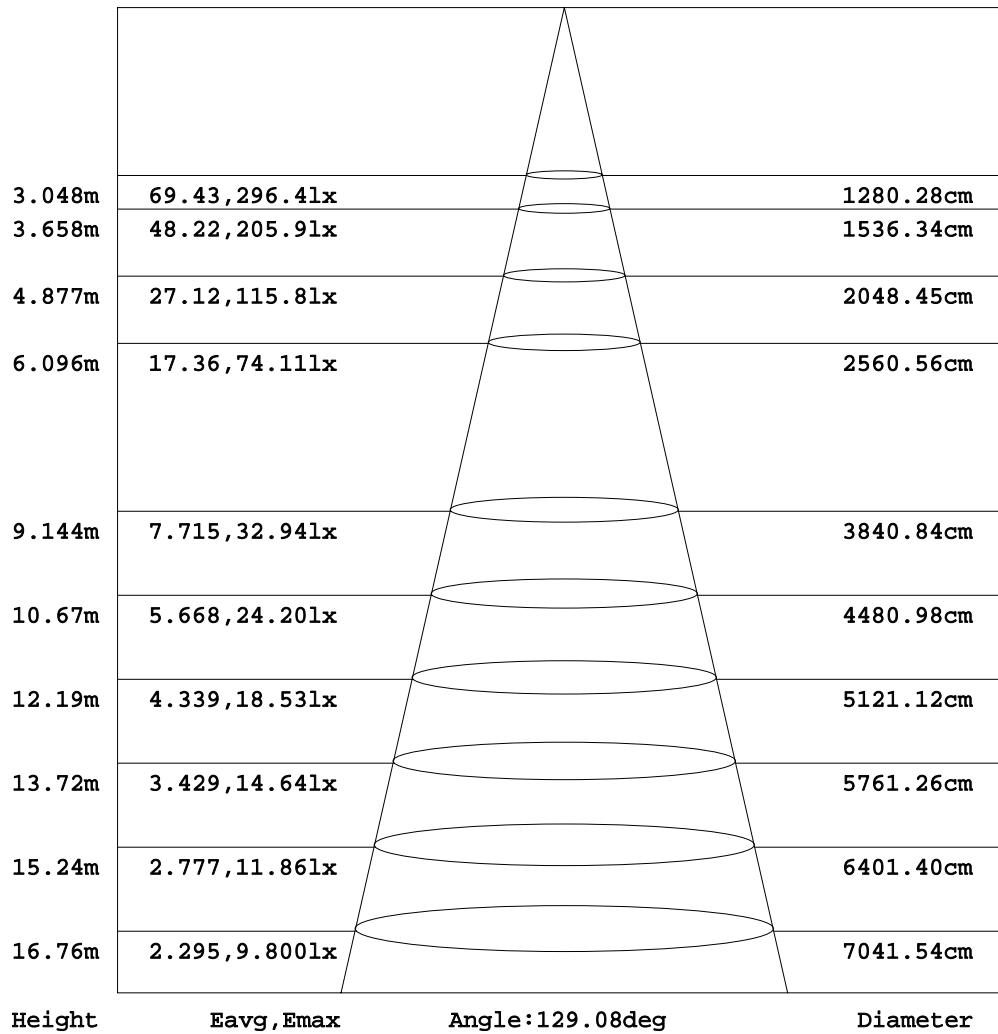
γ Range: 0 - 180DEG  
 γ Interval: 1.0DEG  
 Test System: EVERFINE GO-2000B\_V1 SYSTEM V2.00.426  
 Humidity: 65.0%  
 Test Distance: 12.550m [K=1.0000]  
 Remarks:



AAI Figure

Test:U:120.24V I:0.8263A P:99.076W PF:0.9972 Freq:59.98Hz UTHDi:0% ITHDi:0% Lamp Flux:12015.9x1 lm		
NAME: TS-GCP1110-100W-TCP	TYPE:	WEIGHT:
SPEC.:	DIM.:	SERIAL No.:
MFR.:	SUR.:	Shielding Angle:

Flux out:9320 lm



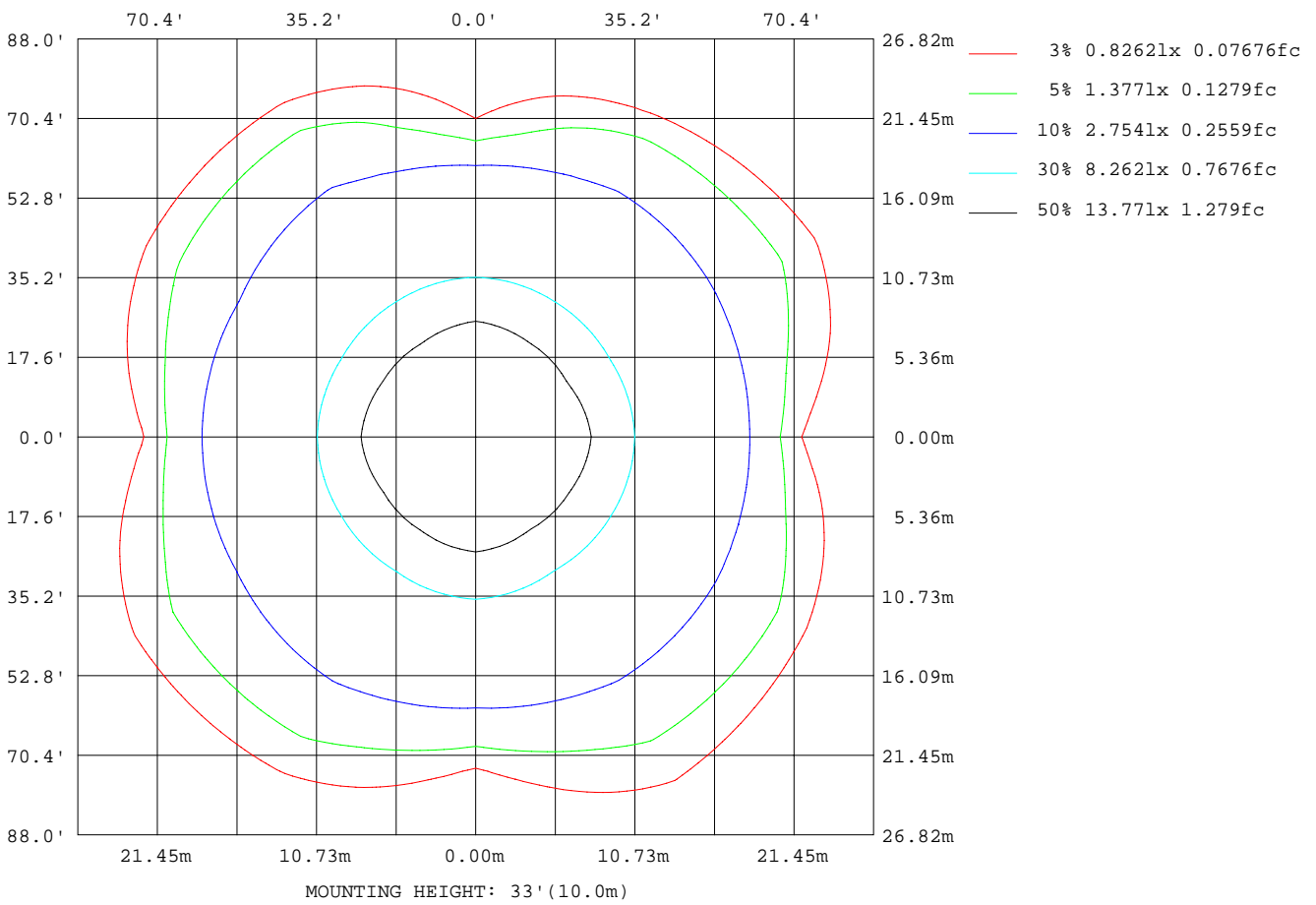
Note:The Curves indicate the illuminated area and the average illumination when the luminaire is at different distance.

C Range: 0 - 360DEG  
 C Interval: 30.0DEG  
 Test Speed: HIGH  
 Temperature:25.3DEG  
 Operators:DAMIN  
 Test Date:2024-06-09

γ Range: 0 - 180DEG  
 γ Interval: 1.0DEG  
 Test System:EVERFINE GO-2000B\_V1 SYSTEM V2.00.426  
 Humidity:65.0%  
 Test Distance:12.550m [K=1.0000]  
 Remarks:

ISOLUX DIAGRAM

Test:U:120.24V I:0.8263A P:99.076W PF:0.9972 Freq:59.98Hz UTHDi:0% ITHDi:0% Lamp Flux:12015.9x1 lm		
NAME: TS-GCP1110-100W-TCP	TYPE:	WEIGHT:
SPEC.:	DIM.:	SERIAL No.:
MFR.:	SUR.:	Shielding Angle:



C Range: 0 - 360DEG  
 C Interval: 30.0DEG  
 Test Speed: HIGH  
 Temperature: 25.3DEG  
 Operators: DAMIN  
 Test Date: 2024-06-09

γ Range: 0 - 180DEG  
 γ Interval: 1.0DEG  
 Test System: EVERFINE GO-2000B\_V1 SYSTEM V2.00.426  
 Humidity: 65.0%  
 Test Distance: 12.550m [K=1.0000]  
 Remarks:

## LED Avg.L Report

Test:U:120.24V I:0.8263A P:99.076W PF:0.9972 Freq:59.98Hz UTHDi:0% ITHDi:0% Lamp Flux:12015.9x1 lm		
NAME: TS-GCP1110-100W-TCP	TYPE:	WEIGHT:
SPEC.:	DIM.:	SERIAL No.:
MFR.:	SUR.:	Shielding Angle:

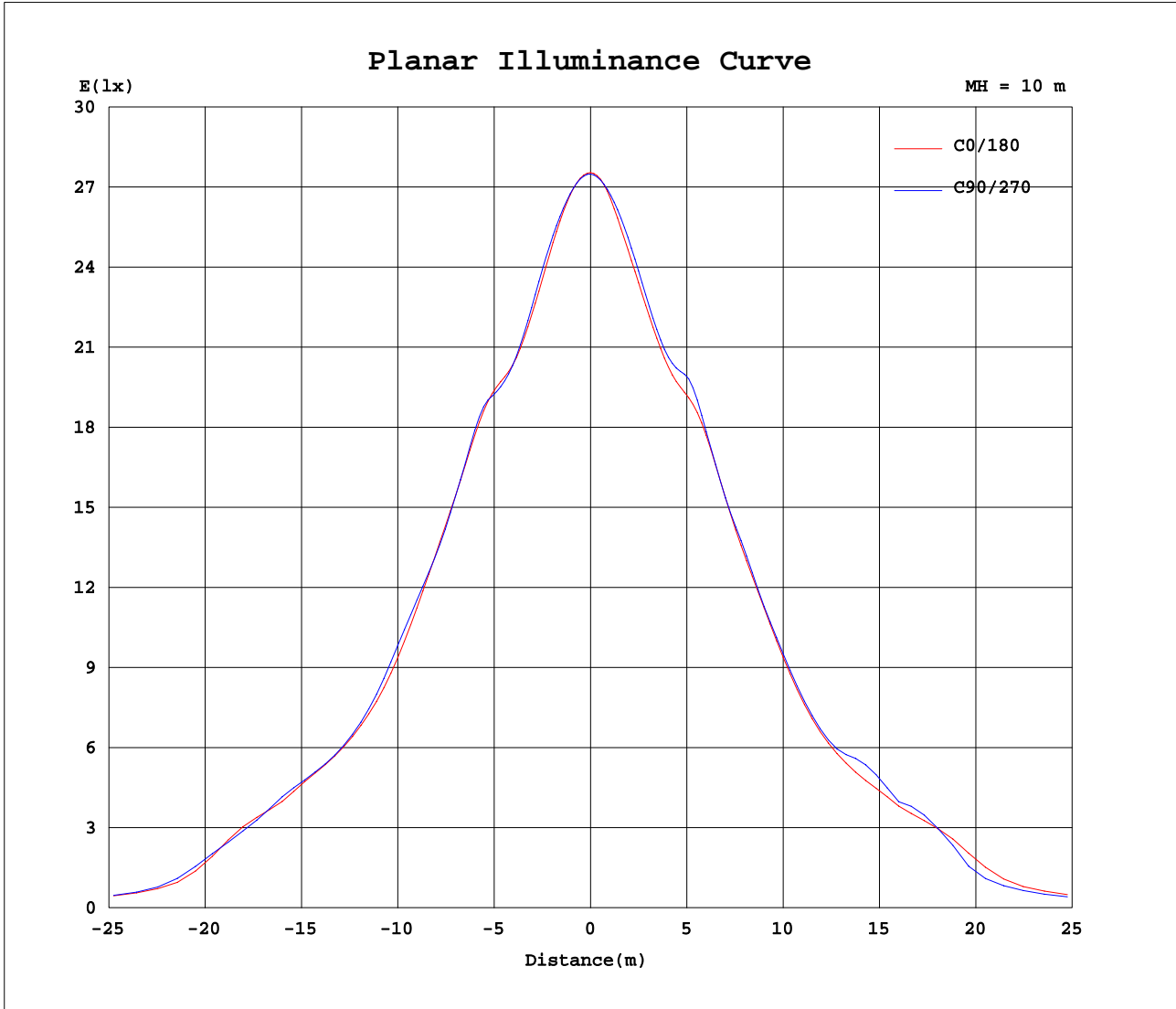
AvgL	cd/m2
L_0~180(65)av	45602
L_0~180(75)av	32298
L_0~180(85)av	52333
L_90~270(65)av	43342
L_90~270(75)av	31006
L_90~270(85)av	51154
L_45(65)av	91330
L_45(75)av	55272
L_45(85)av	93245

Standard: GB/T 29293-2012

C Range: 0 - 360DEG  
C Interval: 30.0DEG  
Test Speed: HIGH  
Temperature:25.3DEG  
Operators:DAMIN  
Test Date:2024-06-09

$\gamma$  Range: 0 - 180DEG  
 $\gamma$  Interval: 1.0DEG  
Test System:EVERFINE GO-2000B\_V1 SYSTEM V2.00.426  
Humidity:65.0%  
Test Distance:12.550m [K=1.0000]  
Remarks:

Planar Illuminance Curve



C Range: 0 - 360DEG  
 C Interval: 30.0DEG  
 Test Speed: HIGH  
 Temperature: 25.3DEG  
 Operators: DAMIN  
 Test Date: 2024-06-09

$\gamma$  Range: 0 - 180DEG  
 $\gamma$  Interval: 1.0DEG  
 Test System: EVERFINE GO-2000B\_V1 SYSTEM V2.00.426  
 Humidity: 65.0%  
 Test Distance: 12.550m [K=1.0000]  
 Remarks: