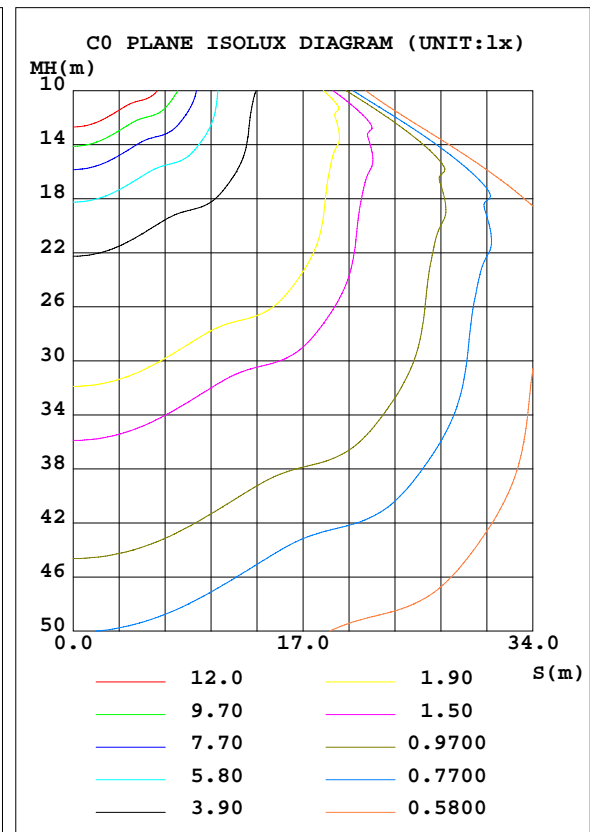
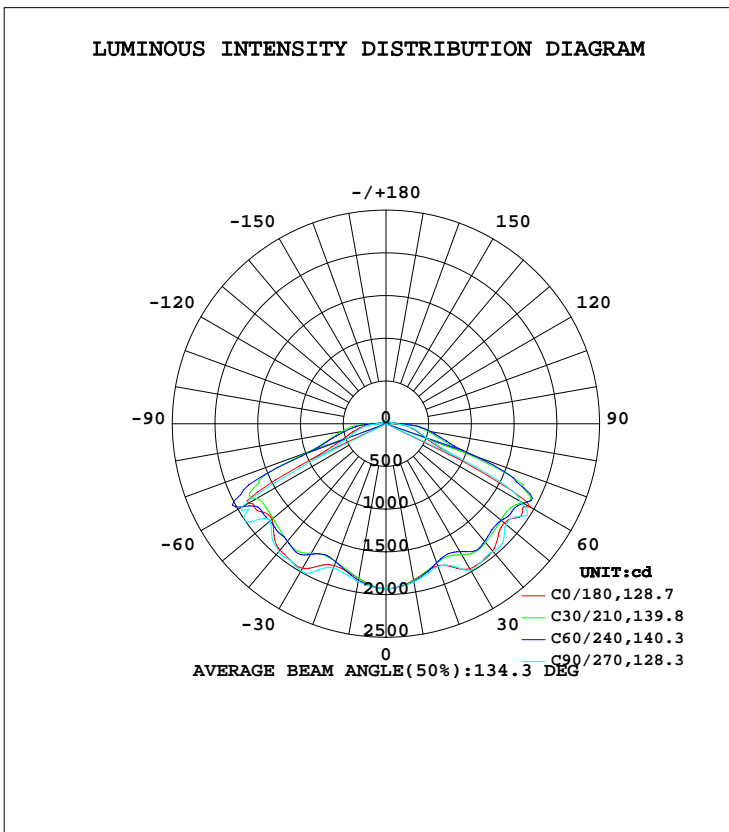


LUMINAIRE PHOTOMETRIC TEST REPORT

Test:U:120.31V I:0.5382A P:64.351W PF:0.9939 Freq:59.98Hz UTHDi:0% ITHDi:0% Lamp Flux:8384.12x1 lm		
NAME: TS-GCP1110-100W-TCP	TYPE:	WEIGHT:
SPEC.:	DIM.:	SERIAL No.:
MFR.:	SUR.:	Shielding Angle:

DATA OF LAMP		PHOTOMETRIC DATA Eff: 130.29 lm/W			
MODEL	TS-GCP1110-100W-TCP	I _{max} (cd)	2034	S/MH(C0/180)	1.54
NOMINAL POWER(W)	60	LOR(%)	100.0	S/MH(C90/270)	1.56
RATED VOLTAGE(V)	120	TOTAL FLUX(lm)	8384.1	η UP, DN(C0-180)	2.0,48.5
NOMINAL FLUX(lm)	8384.12	CIE CLASS	DIRECT	η UP, DN(C180-360)	1.7,47.9
LAMPS INSIDE	1	η up(%)	3.6	CIBSE SHR NOM	1.50
TEST VOLTAGE(V)	120	η down(%)	96.4	CIBSE SHR MAX	1.55



C Range: 0 - 360DEG
 C Interval: 30.0DEG
 Test Speed: HIGH
 Temperature:25.3DEG
 Operators:DAMIN
 Test Date:2024-06-09

γ Range: 0 - 180DEG
 γ Interval: 1.0DEG
 Test System:EVERFINE GO-2000B_V1 SYSTEM V2.00.426
 Humidity:65.0%
 Test Distance:12.550m [K=1.0000]
 Remarks:

ZONAL FLUX DIAGRAM

ZONAL FLUX DIAGRAM:

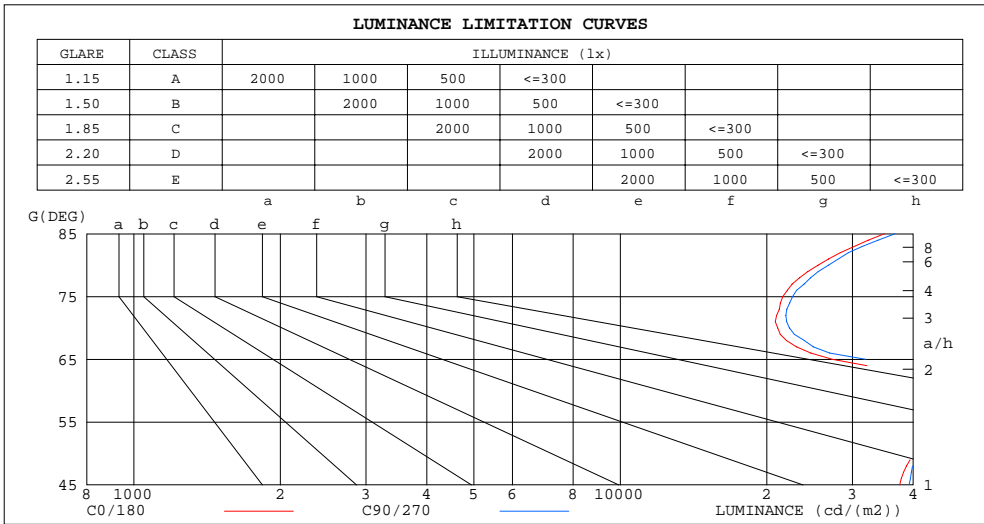
γ	C0	C45	C90	C135	C180	C225	C270	C315	γ	Φ zone	Φ total	lum, lamp
10	1858	1868	1878	1853	1837	1849	1874	1865	0- 10	180.7	180.7	2.16,2.16
20	1770	1734	1781	1725	1768	1719	1799	1730	10- 20	508.1	688.8	8.22,8.22
30	1959	1750	1980	1743	1954	1759	1990	1763	20- 30	817.4	1506	18,18
40	1944	1805	1952	1806	1930	1795	1954	1788	30- 40	1167	2673	31.9,31.9
50	1810	1759	1834	1763	1742	1749	1771	1747	40- 50	1398	4071	48.6,48.6
60	1956	1855	1809	1819	1859	1848	1954	1878	50- 60	1617	5688	67.8,67.8
70	503.9	1034	532.8	1058	545.6	934.1	473.9	899.6	60- 70	1437	7125	85,85
80	309.6	509.7	325.5	521.7	327.7	500.7	291.9	492.9	70- 80	620.9	7746	92.4,92.4
90	105.8	160.4	114.2	167.1	107.3	158.0	96.90	149.9	80- 90	332.8	8079	96.4,96.4
100	65.52	68.72	68.39	70.81	61.00	58.98	57.39	56.76	90-100	101.4	8180	97.6,97.6
110	51.79	50.54	52.54	51.51	42.28	37.80	40.65	37.63	100-110	55.92	8236	98.2,98.2
120	42.32	40.19	42.86	40.25	31.48	28.37	31.14	28.53	110-120	40.17	8276	98.7,98.7
130	36.67	37.94	36.44	36.84	30.59	28.08	29.30	28.46	120-130	29.82	8306	99.1,99.1
140	37.69	37.23	35.82	36.15	29.91	30.17	29.82	30.69	130-140	25.63	8332	99.4,99.4
150	35.30	37.71	35.27	37.18	32.69	33.36	32.60	33.23	140-150	21.37	8353	99.6,99.6
160	36.33	39.43	37.57	38.91	36.24	36.37	35.76	36.23	150-160	16.71	8370	99.8,99.8
170	37.82	39.34	38.14	38.67	37.49	37.89	37.65	37.75	160-170	10.74	8380	100,100
180	37.94	38.26	38.05	38.36	37.93	38.26	38.00	38.37	170-180	3.643	8384	100,100
DEG	LUMINOUS INTENSITY:cd									UNIT:lm		

C Range: 0 - 360DEG
 C Interval: 30.0DEG
 Test Speed: HIGH
 Temperature:25.3DEG
 Operators:DAMIN
 Test Date:2024-06-09

γ Range: 0 - 180DEG
 γ Interval: 1.0DEG
 Test System:EVERFINE GO-2000B_V1 SYSTEM V2.00.426
 Humidity:65.0%
 Test Distance:12.550m [K=1.0000]
 Remarks:

LUMINANCE LIMITATION CURVES

Test:U:120.31V I:0.5382A P:64.351W PF:0.9939 Freq:59.98Hz UTHDi:0% ITHDi:0%			Lamp Flux:8384.12x1 lm
NAME: TS-GCP1110-100W-TCP	TYPE:	WEIGHT:	
SPEC.:	DIM.:	SERIAL No.:	
MFR.:	SUR.:	Shielding Angle:	



LUMINANCE cd/(m2)		
G (DEG)	C0/180	C90/270
85	34867	36669
80	25487	26779
75	21582	22594
70	21060	22258
65	27267	31942
60	55920	51705
55	47540	47139
50	40255	40757
45	37530	39244

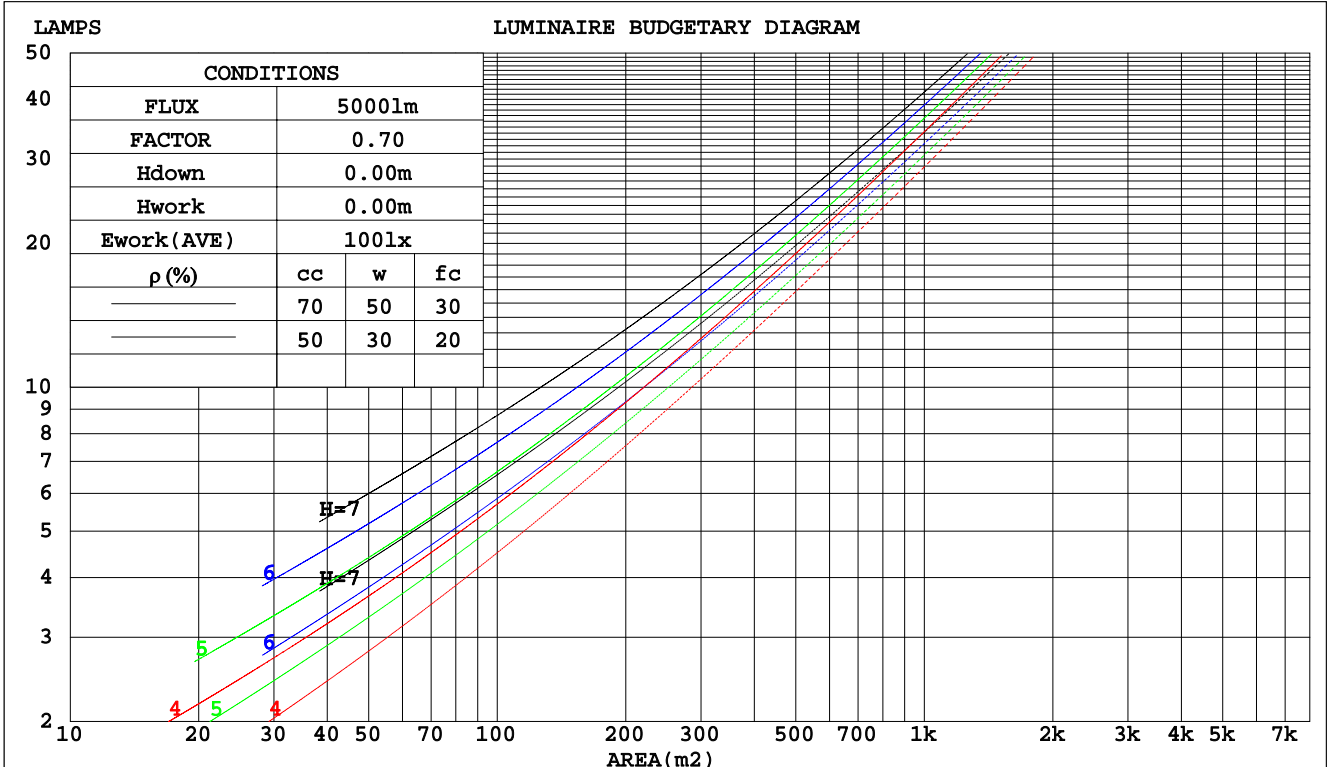
C Range: 0 - 360DEG
 C Interval: 30.0DEG
 Test Speed: HIGH
 Temperature: 25.3DEG
 Operators: DAMIN
 Test Date: 2024-06-09

γ Range: 0 - 180DEG
 γ Interval: 1.0DEG
 Test System: EVERFINE GO-2000B_V1 SYSTEM V2.00.426
 Humidity: 65.0%
 Test Distance: 12.550m [K=1.0000]
 Remarks:

CU AND LUMINAIRE BUDGETARY ESTIMATE DIAGRAM

Test:U:120.31V I:0.5382A P:64.351W PF:0.9939 Freq:59.98Hz UTHDi:0% ITHDi:0% Lamp Flux:8384.12x1 lm		
NAME: TS-GCP1110-100W-TCP	TYPE:	WEIGHT:
SPEC.:	DIM.:	SERIAL No.:
MFR.:	SUR.:	Shielding Angle:

pcc	80%			70%			50%			30%			10%			0
	50%	30%	10%	50%	30%	10%	50%	30%	10%	50%	30%	10%	50%	30%	10%	0
pw																
pfc	20%			20%			20%			20%			20%			0
RCR	RCR:Room Cavity Ratio															
	Coefficients of Utilization(CU)															
0.0	1.18	1.18	1.18	1.15	1.15	1.15	1.09	1.09	1.09	1.04	1.04	1.04	.99	.99	.99	.96
1.0	1.01	.96	.91	.98	.94	.89	.93	.89	.86	.88	.85	.83	.84	.82	.80	.77
2.0	.86	.78	.72	.84	.77	.71	.80	.74	.68	.76	.71	.66	.72	.68	.64	.62
3.0	.74	.65	.58	.72	.64	.57	.69	.61	.56	.65	.59	.54	.62	.57	.53	.50
4.0	.65	.55	.48	.63	.54	.47	.60	.52	.46	.57	.50	.45	.54	.49	.44	.41
5.0	.57	.47	.40	.55	.46	.39	.53	.45	.39	.50	.43	.38	.48	.42	.37	.35
6.0	.51	.41	.34	.49	.40	.34	.47	.39	.33	.45	.38	.32	.43	.37	.32	.29
7.0	.45	.36	.29	.44	.35	.29	.42	.34	.29	.41	.33	.28	.39	.32	.28	.25
8.0	.41	.32	.26	.40	.31	.25	.38	.31	.25	.37	.30	.25	.35	.29	.24	.22
9.0	.37	.29	.23	.37	.28	.23	.35	.28	.22	.34	.27	.22	.32	.26	.22	.20
10.0	.34	.26	.20	.34	.26	.20	.32	.25	.20	.31	.24	.20	.30	.24	.19	.17



C Range: 0 - 360DEG
 C Interval: 30.0DEG
 Test Speed: HIGH
 Temperature:25.3DEG
 Operators:DAMIN
 Test Date:2024-06-09

γ Range: 0 - 180DEG
 γ Interval: 1.0DEG
 Test System:EVERFINE GO-2000B_V1 SYSTEM V2.00.426
 Humidity:65.0%
 Test Distance:12.550m [K=1.0000]
 Remarks:

WEC AND CCEC

Test:U:120.31V I:0.5382A P:64.351W PF:0.9939 Freq:59.98Hz UTHDi:0% ITHDi:0%			Lamp Flux:8384.12x1 lm		
NAME: TS-GCP1110-100W-TCP		TYPE:		WEIGHT:	
SPEC.:		DIM.:		SERIAL No.:	
MFR.:		SUR.:		Shielding Angle:	

ρcc	80%			70%			50%			30%			10%			0
ρw	50%	30%	10%	50%	30%	10%	50%	30%	10%	50%	30%	10%	50%	30%	10%	0
ρfc	20%			20%			20%			20%			20%			0
RCR	RCR:Room Cavity Ratio						Wall Exitance Coefficients(WEC)									
0.0																
1.0	.355	.202	.064	.346	.197	.063	.331	.190	.061	.316	.182	.059	.303	.176	.057	
2.0	.326	.179	.055	.318	.175	.054	.304	.169	.053	.292	.164	.051	.280	.158	.050	
3.0	.298	.158	.047	.291	.156	.047	.279	.151	.046	.267	.146	.045	.256	.142	.044	
4.0	.272	.141	.042	.266	.139	.041	.255	.135	.040	.245	.131	.040	.235	.128	.039	
5.0	.250	.127	.037	.244	.125	.037	.234	.122	.036	.225	.119	.035	.216	.116	.035	
6.0	.230	.115	.033	.225	.114	.033	.216	.111	.032	.208	.108	.032	.200	.105	.031	
7.0	.212	.105	.030	.208	.104	.030	.200	.101	.029	.193	.099	.029	.185	.096	.028	
8.0	.197	.096	.027	.193	.095	.027	.186	.093	.027	.179	.091	.026	.173	.089	.026	
9.0	.184	.089	.025	.180	.088	.025	.174	.086	.024	.168	.084	.024	.162	.082	.024	
10.0	.172	.083	.023	.169	.082	.023	.163	.080	.022	.157	.078	.022	.152	.076	.022	

ρcc	80%			70%			50%			30%			10%			0
ρw	50%	30%	10%	50%	30%	10%	50%	30%	10%	50%	30%	10%	50%	30%	10%	0
ρfc	20%			20%			20%			20%			20%			0
RCR	RCR:Room Cavity Ratio						Ceiling Cavity Exitance Coefficients(CCEC)									
0.0	.218	.218	.218	.187	.187	.187	.127	.127	.127	.073	.073	.073	.023	.023	.023	
1.0	.211	.184	.159	.181	.158	.137	.124	.108	.095	.071	.063	.055	.023	.020	.018	
2.0	.205	.160	.122	.176	.138	.106	.120	.095	.074	.069	.055	.043	.022	.018	.014	
3.0	.198	.143	.099	.170	.123	.086	.117	.086	.060	.067	.050	.035	.022	.016	.012	
4.0	.191	.130	.083	.164	.112	.072	.113	.078	.051	.065	.046	.030	.021	.015	.010	
5.0	.184	.120	.073	.158	.104	.063	.109	.072	.045	.063	.043	.027	.020	.014	.009	
6.0	.176	.112	.065	.152	.097	.057	.105	.068	.040	.061	.040	.024	.020	.013	.008	
7.0	.169	.105	.060	.146	.091	.052	.101	.064	.037	.058	.038	.022	.019	.012	.007	
8.0	.162	.099	.056	.140	.086	.049	.097	.061	.035	.056	.036	.021	.018	.012	.007	
9.0	.156	.094	.053	.134	.082	.046	.093	.058	.033	.054	.034	.020	.018	.011	.006	
10.0	.150	.090	.050	.129	.078	.044	.090	.055	.031	.052	.033	.019	.017	.011	.006	

C Range: 0 - 360DEG
 C Interval: 30.0DEG
 Test Speed: HIGH
 Temperature:25.3DEG
 Operators:DAMIN
 Test Date:2024-06-09

γ Range: 0 - 180DEG
 γ Interval: 1.0DEG
 Test System:EVERFINE GO-2000B_V1 SYSTEM V2.00.426
 Humidity:65.0%
 Test Distance:12.550m [K=1.0000]
 Remarks:

UGR(Unified Glare Rating) Table

Test:U:120.31V I:0.5382A P:64.351W PF:0.9939 Freq:59.98Hz UTHDi:0% ITHDi:0%						Lamp Flux:8384.12x1 lm				
NAME: TS-GCP1110-100W-TCP			TYPE:			WEIGHT:				
SPEC.:			DIM.:			SERIAL No.:				
MFR.:			SUR.:			Shielding Angle:				
ceiling/cavity	0.7	0.7	0.5	0.5	0.3	0.7	0.7	0.5	0.5	0.3
walls	0.5	0.3	0.5	0.3	0.3	0.5	0.3	0.5	0.3	0.3
working plane	0.2	0.2	0.2	0.2	0.2	0.2	0.2	0.2	0.2	0.2
Room dimensions	Viewed crosswise					Viewed endwise				
x = 2H y = 2H	26.3	28.0	26.7	28.4	28.8	26.6	28.3	27.0	28.7	29.1
3H	27.5	29.1	27.9	29.5	29.9	27.6	29.1	28.0	29.5	30.0
4H	27.8	29.3	28.3	29.7	30.2	27.9	29.3	28.3	29.7	30.2
6H	28.2	29.5	28.6	30.0	30.5	28.2	29.6	28.7	30.0	30.5
8H	28.4	29.7	28.8	30.1	30.6	28.4	29.7	28.8	30.1	30.6
12H	28.6	29.8	29.0	30.3	30.8	28.6	29.8	29.0	30.3	30.8
4H 2H	27.6	29.0	28.0	29.4	29.9	27.7	29.2	28.2	29.6	30.0
3H	28.8	30.1	29.3	30.5	31.0	28.9	30.1	29.3	30.6	31.1
4H	29.3	30.4	29.7	30.9	31.4	29.3	30.4	29.8	30.9	31.4
6H	29.7	30.7	30.3	31.2	31.8	29.8	30.7	30.3	31.3	31.8
8H	30.0	30.9	30.5	31.4	32.0	30.0	30.9	30.5	31.4	32.0
12H	30.3	31.1	30.8	31.7	32.2	30.2	31.1	30.8	31.6	32.2
8H 4H	29.6	30.6	30.1	31.1	31.6	29.7	30.6	30.2	31.1	31.7
6H	30.4	31.1	30.9	31.7	32.2	30.4	31.2	30.9	31.7	32.3
8H	30.8	31.5	31.3	32.0	32.6	30.8	31.5	31.3	32.0	32.6
12H	31.2	31.8	31.8	32.4	33.0	31.2	31.8	31.8	32.4	33.0
12H 4H	29.7	30.5	30.2	31.1	31.6	29.8	30.6	30.3	31.1	31.7
6H	30.5	31.2	31.1	31.8	32.4	30.6	31.3	31.1	31.8	32.4
8H	31.1	31.7	31.6	32.2	32.9	31.1	31.7	31.6	32.2	32.9
CIE190: 2010										

CIE190: 2010
Area: 0.07 m2

C Range: 0 - 360DEG
C Interval: 30.0DEG
Test Speed: HIGH
Temperature:25.3DEG
Operators:DAMIN
Test Date:2024-06-09

γ Range: 0 - 180DEG
γ Interval: 1.0DEG
Test System:EVERFINE GO-2000B_V1 SYSTEM V2.00.426
Humidity:65.0%
Test Distance:12.550m [K=1.0000]
Remarks:

UTILIZATION FACTORS TABLE

Test:U:120.31V I:0.5382A P:64.351W PF:0.9939 Freq:59.98Hz UTHDi:0% ITHDi:0%			Lamp Flux:8384.12x1 lm
NAME: TS-GCP1110-100W-TCP	TYPE:	WEIGHT:	
SPEC.:	DIM.:	SERIAL No.:	
MFR.:	SUR.:	Shielding Angle:	

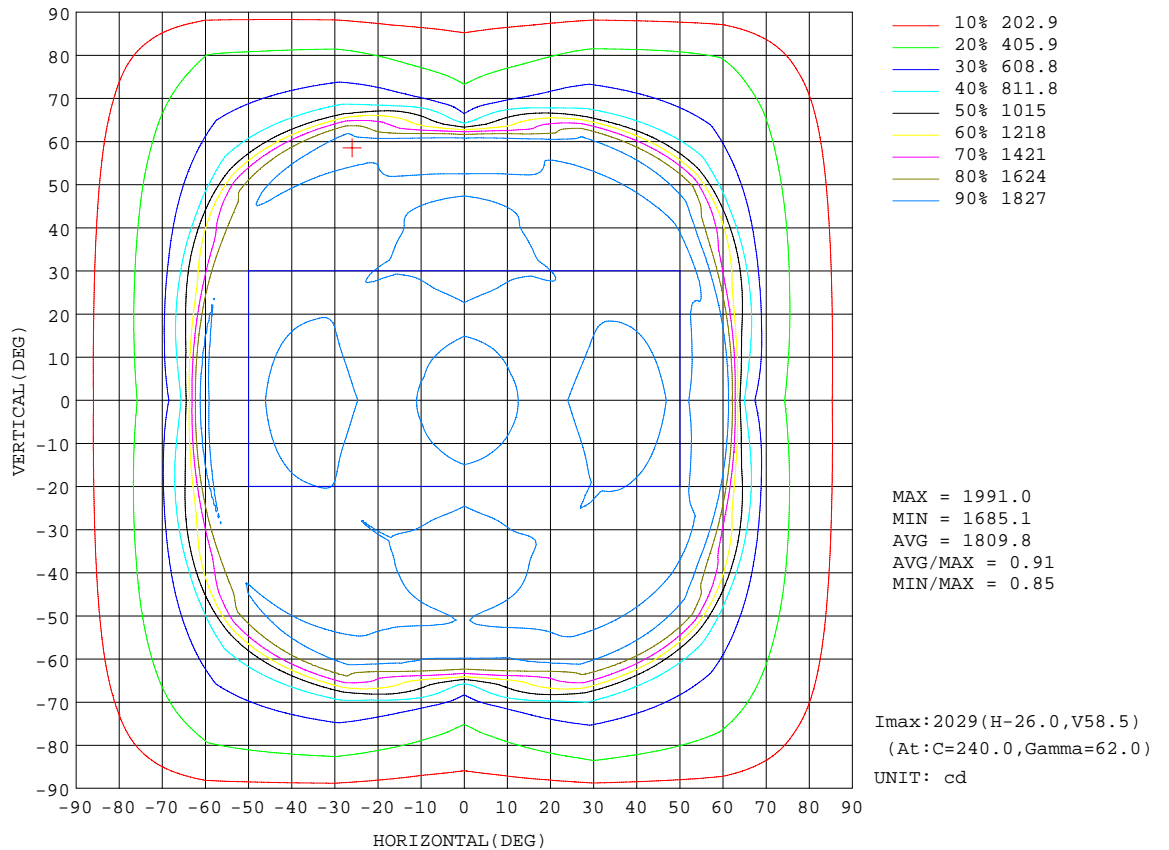
REFLECTANCE										
Ceiling	0.8	0.8	0.8	0.7	0.7	0.7	0.5	0.5	0.5	0
Walls	0.7	0.5	0.3	0.7	0.5	0.3	0.7	0.5	0.3	0
Working plane	0.2	0.2	0.2	0.2	0.2	0.2	0.2	0.2	0.2	0
ROOM INDEX	UTILIZATION FACTORS(PERCENT) $k(RI) \times RCR = 5$									
k = 0.60	50	37	29	49	37	29	48	36	29	22
0.80	60	47	39	59	46	38	57	45	38	30
1.00	69	56	48	67	55	48	65	57	47	39
1.25	76	64	56	75	63	56	71	62	55	46
1.50	82	70	62	80	69	62	76	67	60	52
2.00	90	80	72	87	78	71	83	76	69	60
2.50	94	85	78	92	84	77	87	80	75	65
3.00	98	90	84	96	88	82	91	85	80	70
4.00	103	96	91	100	94	89	95	90	86	75
5.00	106	100	95	103	98	93	98	93	90	79
ROOM INDEX	UF(total)									Direct
According to DIN EN 13032-2 2004			Suspended				SHRNOM = 1.25			

C Range: 0 - 360DEG
 C Interval: 30.0DEG
 Test Speed: HIGH
 Temperature:25.3DEG
 Operators:DAMIN
 Test Date:2024-06-09

γ Range: 0 - 180DEG
 γ Interval: 1.0DEG
 Test System:EVERFINE GO-2000B_V1 SYSTEM V2.00.426
 Humidity:65.0%
 Test Distance:12.550m [K=1.0000]
 Remarks:

ISOCANDELA DIAGRAM

Test:U:120.31V I:0.5382A P:64.351W PF:0.9939 Freq:59.98Hz UTHDi:0% ITHDi:0% Lamp Flux:8384.12x1 lm		
NAME: TS-GCP1110-100W-TCP	TYPE:	WEIGHT:
SPEC.:	DIM.:	SERIAL No.:
MFR.:	SUR.:	Shielding Angle:



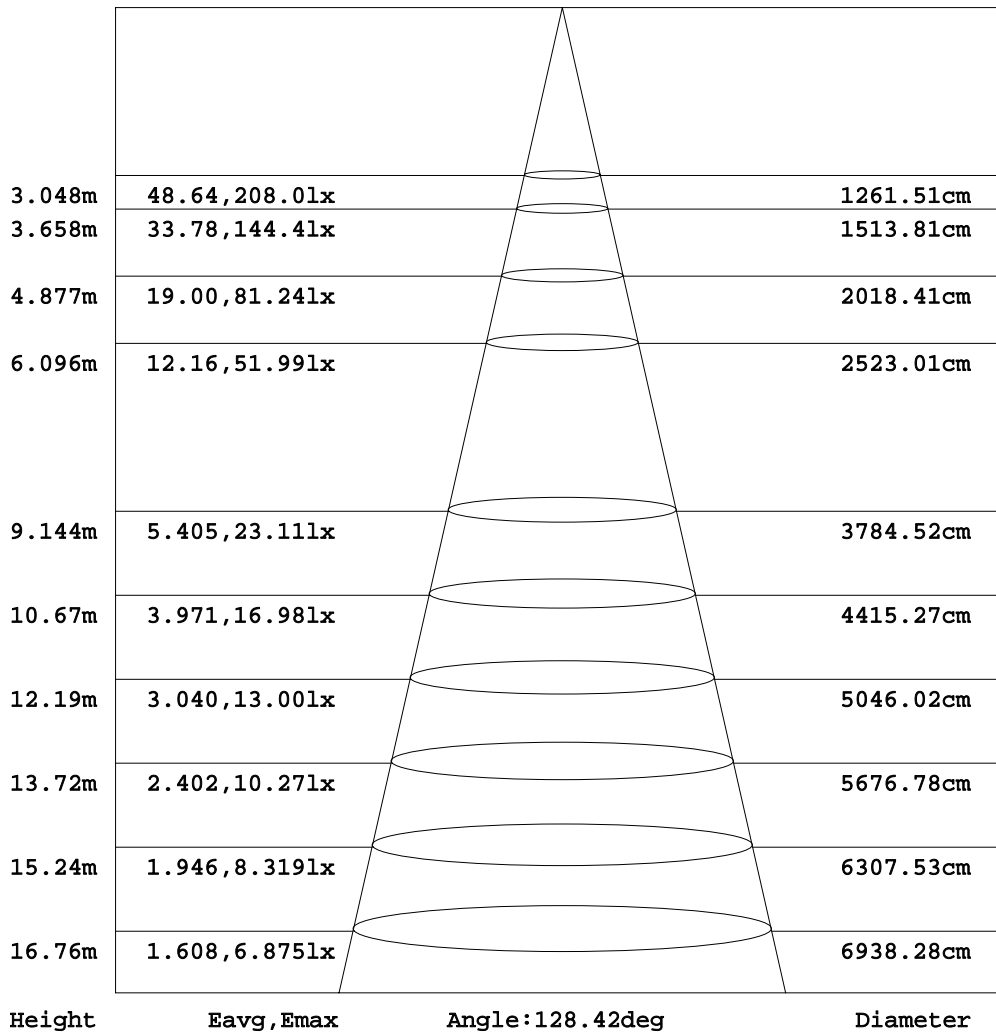
C Range: 0 - 360DEG
 C Interval: 30.0DEG
 Test Speed: HIGH
 Temperature: 25.3DEG
 Operators: DAMIN
 Test Date: 2024-06-09

γ Range: 0 - 180DEG
 γ Interval: 1.0DEG
 Test System: EVERFINE GO-2000B_V1 SYSTEM V2.00.426
 Humidity: 65.0%
 Test Distance: 12.550m [K=1.0000]
 Remarks:

AAI Figure

Test:U:120.31V I:0.5382A P:64.351W PF:0.9939 Freq:59.98Hz UTHDi:0% ITHDi:0% Lamp Flux:8384.12x1 lm		
NAME: TS-GCP1110-100W-TCP	TYPE:	WEIGHT:
SPEC.:	DIM.:	SERIAL No.:
MFR.:	SUR.:	Shielding Angle:

Flux out:6529 lm



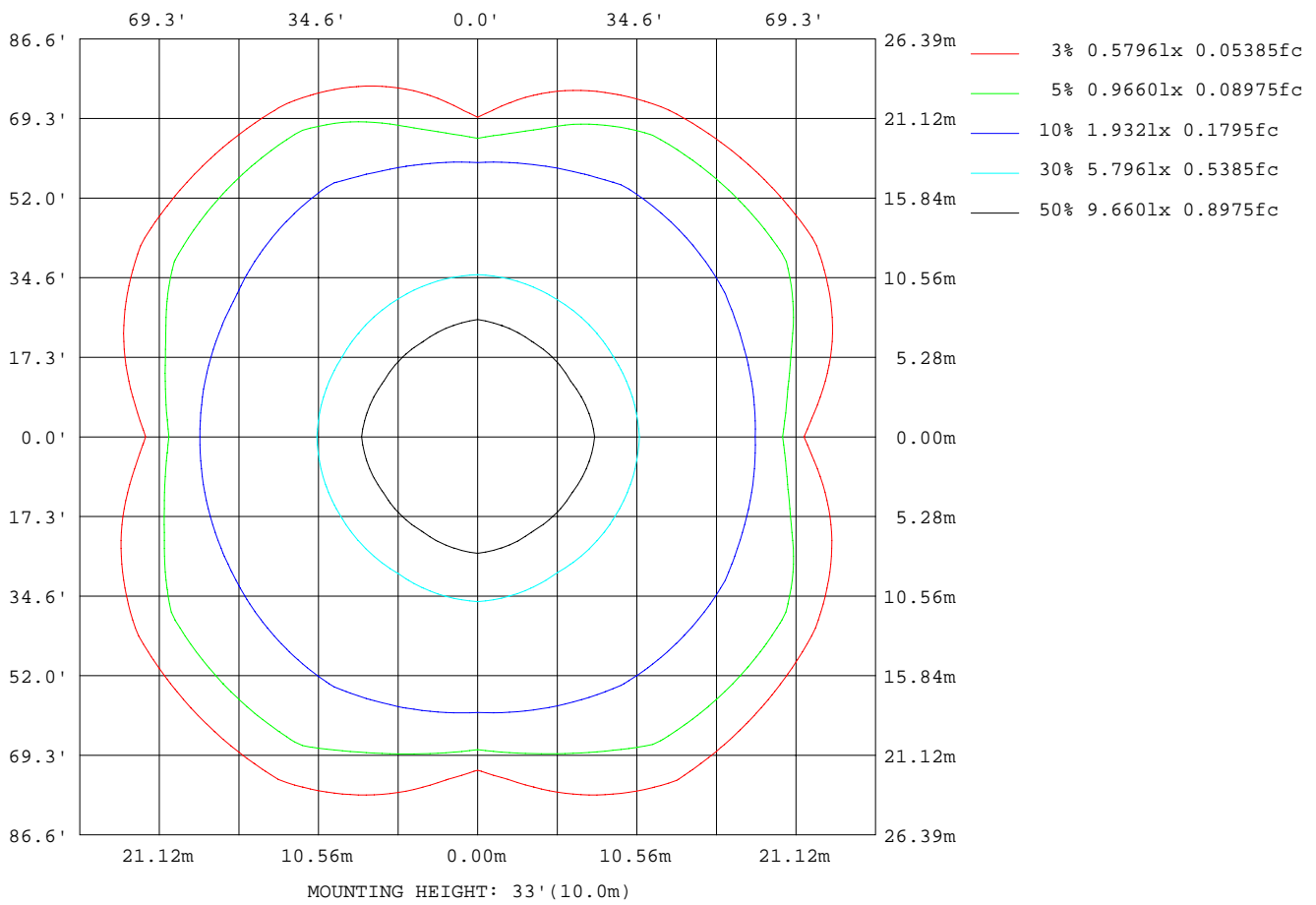
Note: The Curves indicate the illuminated area and the average illumination when the luminaire is at different distance.

C Range: 0 - 360DEG
 C Interval: 30.0DEG
 Test Speed: HIGH
 Temperature: 25.3DEG
 Operators: DAMIN
 Test Date: 2024-06-09

γ Range: 0 - 180DEG
 γ Interval: 1.0DEG
 Test System: EVERFINE GO-2000B_V1 SYSTEM V2.00.426
 Humidity: 65.0%
 Test Distance: 12.550m [K=1.0000]
 Remarks:

ISOLUX DIAGRAM

Test:U:120.31V I:0.5382A P:64.351W PF:0.9939 Freq:59.98Hz UTHDi:0% ITHDi:0% Lamp Flux:8384.12x1 lm		
NAME: TS-GCP1110-100W-TCP	TYPE:	WEIGHT:
SPEC.:	DIM.:	SERIAL No.:
MFR.:	SUR.:	Shielding Angle:



C Range: 0 - 360DEG
 C Interval: 30.0DEG
 Test Speed: HIGH
 Temperature:25.3DEG
 Operators:DAMIN
 Test Date:2024-06-09

γ Range: 0 - 180DEG
 γ Interval: 1.0DEG
 Test System:EVERFINE GO-2000B_V1 SYSTEM V2.00.426
 Humidity:65.0%
 Test Distance:12.550m [K=1.0000]
 Remarks:

LED Avg.L Report

Test:U:120.31V I:0.5382A P:64.351W PF:0.9939 Freq:59.98Hz UTHDi:0% ITHDi:0% Lamp Flux:8384.12x1 lm		
NAME: TS-GCP1110-100W-TCP	TYPE:	WEIGHT:
SPEC.:	DIM.:	SERIAL No.:
MFR.:	SUR.:	Shielding Angle:

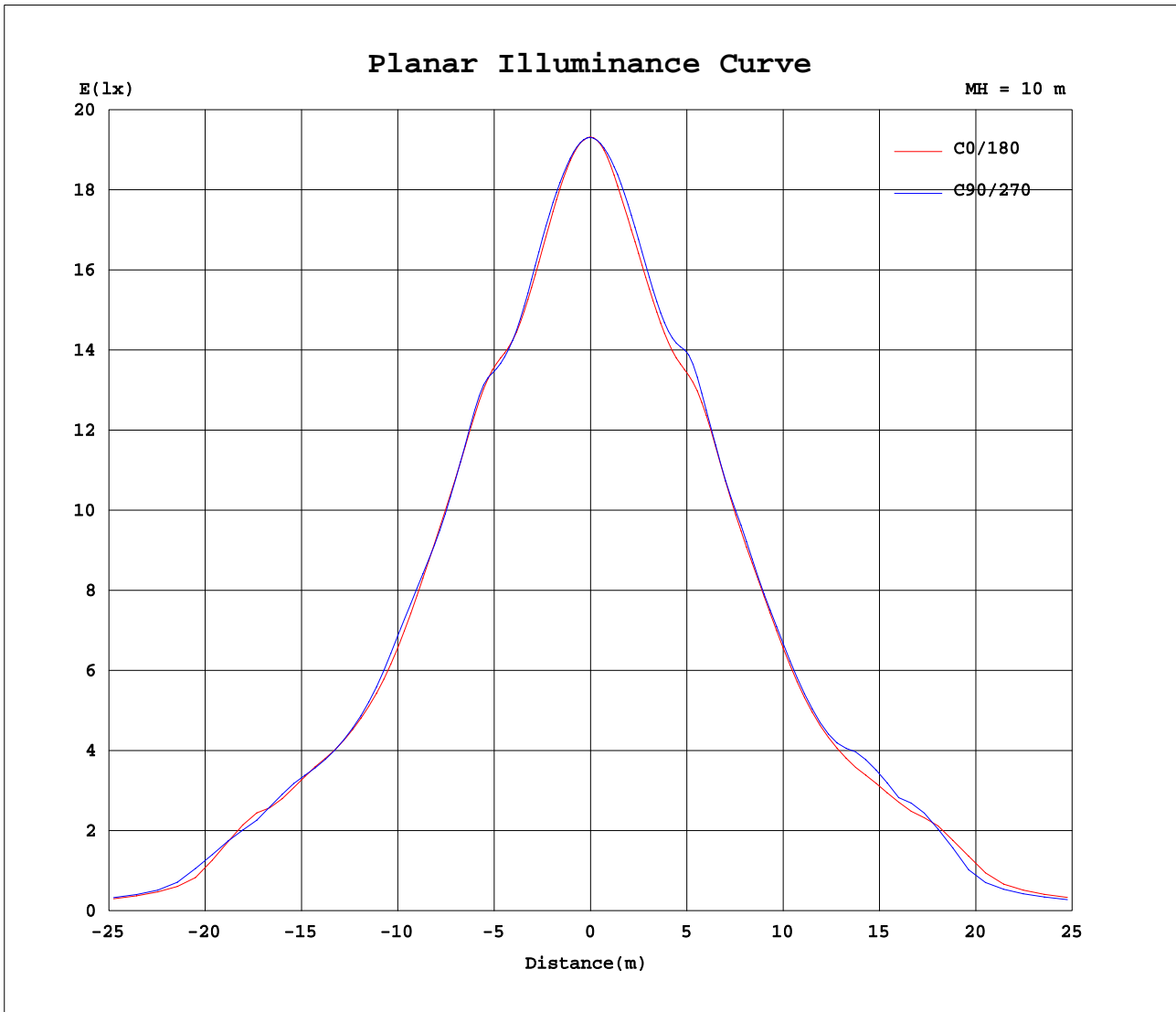
AvgL	cd/m2
L_0~180(65)av	28570
L_0~180(75)av	22515
L_0~180(85)av	36013
L_90~270(65)av	27997
L_90~270(75)av	21645
L_90~270(85)av	35400
L_45(65)av	63550
L_45(75)av	38284
L_45(85)av	65012

Standard: GB/T 29293-2012

C Range: 0 - 360DEG
C Interval: 30.0DEG
Test Speed: HIGH
Temperature:25.3DEG
Operators:DAMIN
Test Date:2024-06-09

γ Range: 0 - 180DEG
 γ Interval: 1.0DEG
Test System:EVERFINE GO-2000B_V1 SYSTEM V2.00.426
Humidity:65.0%
Test Distance:12.550m [K=1.0000]
Remarks:

Planar Illuminance Curve



C Range: 0 - 360DEG
C Interval: 30.0DEG
Test Speed: HIGH
Temperature: 25.3DEG
Operators: DAMIN
Test Date: 2024-06-09

γ Range: 0 - 180DEG
 γ Interval: 1.0DEG
Test System: EVERFINE GO-2000B_V1 SYSTEM V2.00.426
Humidity: 65.0%
Test Distance: 12.550m [K=1.0000]
Remarks: