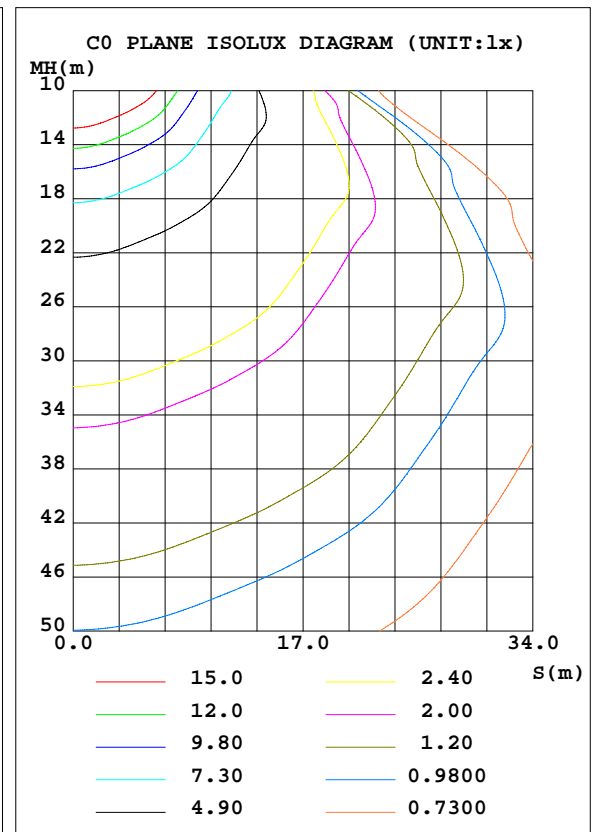
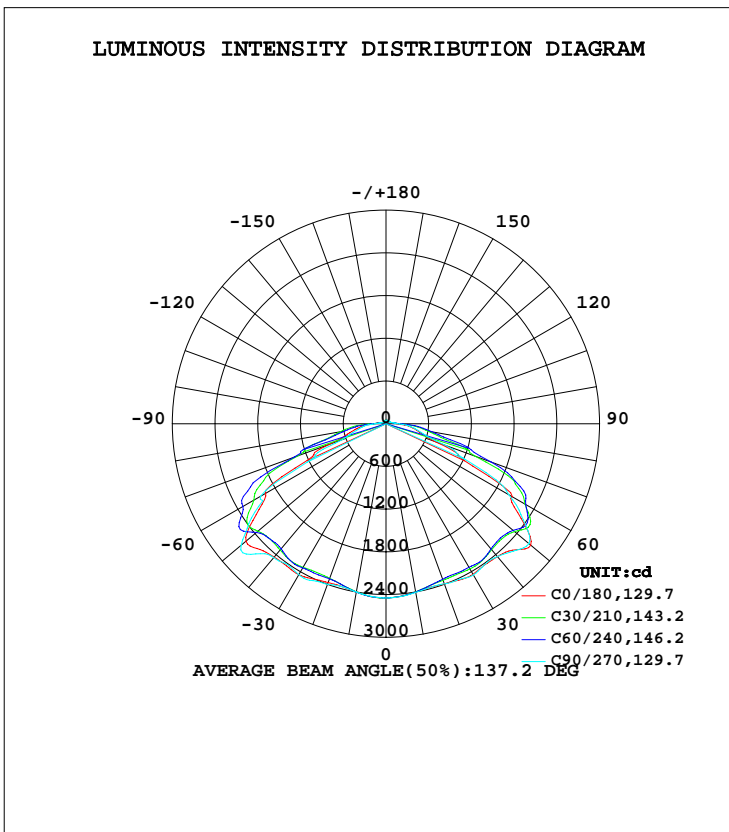


LUMINAIRE PHOTOMETRIC TEST REPORT

Test:U:120.29V I:0.6589A P:78.904W PF:0.9955 Freq:59.98Hz UTHDi:0% ITHDi:0% Lamp Flux:10859.7x1 lm		
NAME: TS-GCP1110-100W-TCP	TYPE:	WEIGHT:
SPEC.:	DIM.:	SERIAL No.:
MFR.:	SUR.:	Shielding Angle:

DATA OF LAMP		PHOTOMETRIC DATA Eff: 137.63 lm/W			
MODEL	TS-GCP1110-100W-TCP	I _{max} (cd)	2708	S/MH(C0/180)	1.53
NOMINAL POWER(W)	80	LOR(%)	100.0	S/MH(C90/270)	1.53
RATED VOLTAGE(V)	120	TOTAL FLUX(lm)	10860	η UP, DN(C0-180)	2.0,48.4
NOMINAL FLUX(lm)	10859.7	CIE CLASS	DIRECT	η UP, DN(C180-360)	1.7,47.9
LAMPS INSIDE	1	η up(%)	3.7	CIBSE SHR NOM	1.75
TEST VOLTAGE(V)	120	η down(%)	96.3	CIBSE SHR MAX	1.75



C Range: 0 - 360DEG
 C Interval: 30.0DEG
 Test Speed: HIGH
 Temperature:25.3DEG
 Operators:DAMIN
 Test Date:2024-06-09

γ Range: 0 - 180DEG
 γ Interval: 1.0DEG
 Test System:EVERFINE GO-2000B_V1 SYSTEM V2.00.426
 Humidity:65.0%
 Test Distance:12.550m [K=1.0000]
 Remarks:

ZONAL FLUX DIAGRAM

ZONAL FLUX DIAGRAM:

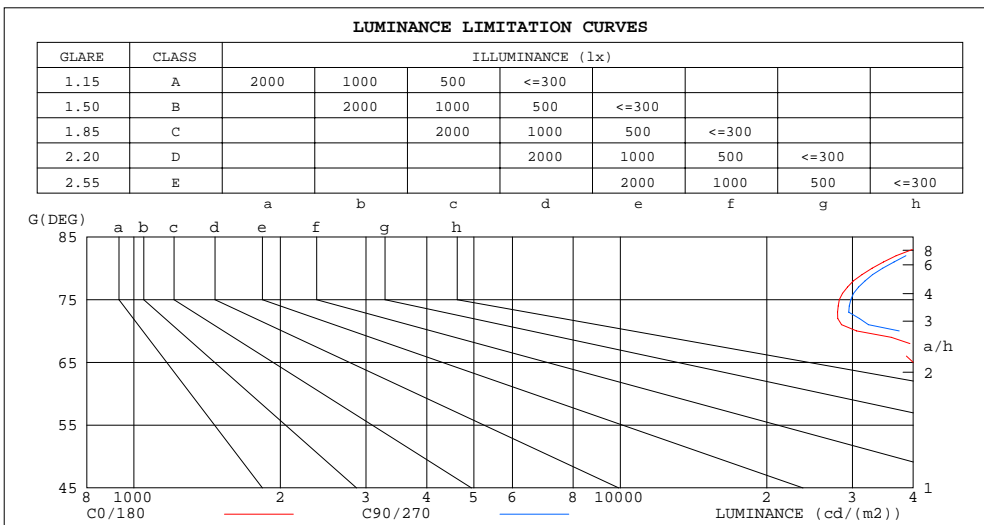
γ	C0	C45	C90	C135	C180	C225	C270	C315	γ	Φ zone	Φ total	Φ lum,lamp
10	2399	2399	2407	2403	2400	2399	2400	2395	0- 10	231.2	231.2	2.13,2.13
20	2392	2332	2392	2329	2374	2315	2400	2320	10- 20	669.5	900.7	8.29,8.29
30	2442	2342	2452	2334	2449	2333	2449	2334	20- 30	1091	1992	18.3,18.3
40	2436	2303	2435	2311	2446	2304	2454	2285	30- 40	1486	3478	32,32
50	2654	2344	2620	2353	2567	2362	2657	2351	40- 50	1844	5323	49,49
60	2049	2261	1988	2231	1953	2232	2036	2259	50- 60	2114	7436	68.5,68.5
70	733.6	1449	895.7	1459	849.9	1340	655.1	1325	60- 70	1739	9175	84.5,84.5
80	400.9	626.6	420.6	646.6	425.2	619.7	375.8	609.8	70- 80	876.0	10052	92.6,92.6
90	153.9	193.6	165.5	201.4	158.7	189.2	144.4	179.7	80- 90	407.9	10459	96.3,96.3
100	90.37	90.13	95.79	92.72	88.12	78.50	80.34	75.76	90-100	134.3	10594	97.6,97.6
110	66.42	64.43	67.67	65.18	57.39	49.29	53.85	49.07	100-110	74.19	10668	98.2,98.2
120	56.18	52.71	56.74	52.75	41.54	36.82	40.83	37.04	110-120	51.95	10720	98.7,98.7
130	47.89	49.09	47.35	47.54	39.69	36.33	37.55	36.86	120-130	38.90	10759	99.1,99.1
140	48.40	48.26	45.63	46.72	38.62	39.05	38.54	39.76	130-140	33.13	10792	99.4,99.4
150	45.76	48.86	45.76	48.09	42.35	43.05	42.29	43.01	140-150	27.62	10819	99.6,99.6
160	47.17	51.02	48.58	50.25	46.88	47.02	46.26	46.86	150-160	21.62	10841	99.8,99.8
170	49.09	50.99	49.45	50.12	48.78	49.31	48.93	49.01	160-170	13.91	10855	100,100
180	49.40	49.86	49.42	50.01	49.34	49.85	49.42	49.98	170-180	4.737	10860	100,100
DEG	LUMINOUS INTENSITY:cd									UNIT:lm		

C Range: 0 - 360DEG
 C Interval: 30.0DEG
 Test Speed: HIGH
 Temperature:25.3DEG
 Operators:DAMIN
 Test Date:2024-06-09

γ Range: 0 - 180DEG
 γ Interval: 1.0DEG
 Test System:EVERFINE GO-2000B_V1 SYSTEM V2.00.426
 Humidity:65.0%
 Test Distance:12.550m [K=1.0000]
 Remarks:

LUMINANCE LIMITATION CURVES

Test:U:120.29V I:0.6589A P:78.904W PF:0.9955 Freq:59.98Hz UTHDi:0% ITHDi:0%		Lamp Flux:10859.7x1 lm
NAME: TS-GCP1110-100W-TCP	TYPE:	WEIGHT:
SPEC.:	DIM.:	SERIAL No.:
MFR.:	SUR.:	Shielding Angle:



LUMINANCE cd/(m2)		
G (DEG)	C0/180	C90/270
85	48314	50929
80	32926	34622
75	28188	29782
70	30594	37433
65	39971	45731
60	58459	56826
55	57619	58612
50	58882	58272
45	50673	51163

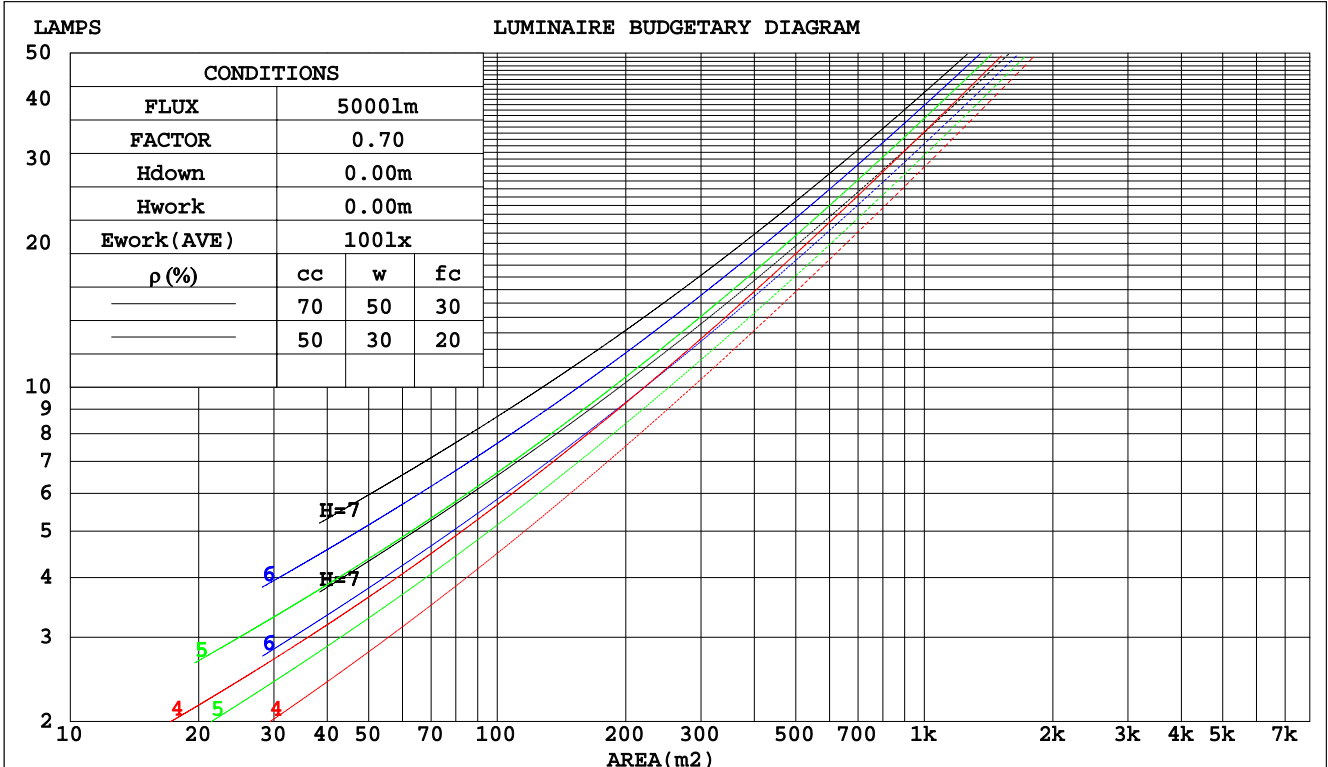
C Range: 0 - 360DEG
 C Interval: 30.0DEG
 Test Speed: HIGH
 Temperature: 25.3DEG
 Operators: DAMIN
 Test Date: 2024-06-09

γ Range: 0 - 180DEG
 γ Interval: 1.0DEG
 Test System: EVERFINE GO-2000B_V1 SYSTEM V2.00.426
 Humidity: 65.0%
 Test Distance: 12.550m [K=1.0000]
 Remarks:

CU AND LUMINAIRE BUDGETARY ESTIMATE DIAGRAM

Test:U:120.29V I:0.6589A P:78.904W PF:0.9955 Freq:59.98Hz UTHDi:0% ITHDi:0% Lamp Flux:10859.7x1 lm		
NAME: TS-GCP1110-100W-TCP	TYPE:	WEIGHT:
SPEC.:	DIM.:	SERIAL No.:
MFR.:	SUR.:	Shielding Angle:

pcc	80%			70%			50%			30%			10%			0
	50%	30%	10%	50%	30%	10%	50%	30%	10%	50%	30%	10%	50%	30%	10%	0
pw																
pfc	20%			20%			20%			20%			20%			0
RCR	RCR:Room Cavity Ratio															
	Coefficients of Utilization(CU)															
0.0	1.18	1.18	1.18	1.15	1.15	1.15	1.09	1.09	1.09	1.04	1.04	1.04	.99	.99	.99	.96
1.0	1.01	.96	.91	.98	.94	.90	.93	.89	.86	.88	.85	.83	.84	.82	.80	.77
2.0	.86	.78	.72	.84	.77	.71	.80	.74	.69	.76	.71	.66	.72	.68	.64	.62
3.0	.74	.65	.58	.72	.64	.57	.69	.62	.56	.65	.59	.54	.62	.57	.53	.50
4.0	.65	.55	.48	.63	.54	.47	.60	.52	.46	.57	.50	.45	.55	.49	.44	.42
5.0	.57	.47	.40	.56	.46	.40	.53	.45	.39	.51	.44	.38	.48	.42	.37	.35
6.0	.51	.41	.34	.50	.40	.34	.47	.39	.33	.45	.38	.33	.43	.37	.32	.30
7.0	.46	.36	.30	.45	.36	.29	.43	.35	.29	.41	.34	.28	.39	.33	.28	.26
8.0	.41	.32	.26	.40	.32	.26	.39	.31	.25	.37	.30	.25	.36	.29	.24	.22
9.0	.38	.29	.23	.37	.28	.23	.35	.28	.22	.34	.27	.22	.33	.26	.22	.20
10.0	.34	.26	.20	.34	.26	.20	.32	.25	.20	.31	.25	.20	.30	.24	.20	.18



C Range: 0 - 360DEG
 C Interval: 30.0DEG
 Test Speed: HIGH
 Temperature: 25.3DEG
 Operators: DAMIN
 Test Date: 2024-06-09

γ Range: 0 - 180DEG
 γ Interval: 1.0DEG
 Test System: EVERFINE GO-2000B_V1 SYSTEM V2.00.426
 Humidity: 65.0%
 Test Distance: 12.550m [K=1.0000]
 Remarks:

WEC AND CCEC

Test:U:120.29V I:0.6589A P:78.904W PF:0.9955 Freq:59.98Hz UTHDi:0% ITHDi:0% Lamp Flux:10859.7x1 lm		
NAME: TS-GCP1110-100W-TCP	TYPE:	WEIGHT:
SPEC.:	DIM.:	SERIAL No.:
MFR.:	SUR.:	Shielding Angle:

ρcc	80%			70%			50%			30%			10%			0
ρw	50%	30%	10%	50%	30%	10%	50%	30%	10%	50%	30%	10%	50%	30%	10%	0
ρfc	20%			20%			20%			20%			20%			0
RCR	RCR:Room Cavity Ratio						Wall Exitance Coefficients(WEC)									
0.0																
1.0	.353	.201	.064	.345	.197	.062	.329	.189	.060	.315	.182	.058	.302	.175	.056	
2.0	.325	.178	.055	.317	.175	.054	.304	.169	.052	.291	.163	.051	.279	.158	.050	
3.0	.297	.158	.047	.290	.155	.047	.278	.151	.046	.266	.146	.045	.256	.141	.044	
4.0	.271	.141	.041	.265	.139	.041	.254	.135	.040	.244	.131	.040	.234	.127	.039	
5.0	.249	.127	.037	.244	.125	.036	.234	.122	.036	.224	.118	.035	.215	.115	.035	
6.0	.229	.115	.033	.224	.113	.033	.215	.110	.032	.207	.108	.032	.199	.105	.031	
7.0	.212	.105	.030	.208	.103	.029	.200	.101	.029	.192	.098	.029	.185	.096	.028	
8.0	.197	.096	.027	.193	.095	.027	.186	.093	.026	.179	.091	.026	.172	.088	.026	
9.0	.184	.089	.025	.180	.088	.025	.173	.086	.024	.167	.084	.024	.161	.082	.024	
10.0	.172	.082	.023	.169	.081	.023	.163	.080	.022	.157	.078	.022	.152	.076	.022	

ρcc	80%			70%			50%			30%			10%			0
ρw	50%	30%	10%	50%	30%	10%	50%	30%	10%	50%	30%	10%	50%	30%	10%	0
ρfc	20%			20%			20%			20%			20%			0
RCR	RCR:Room Cavity Ratio						Ceiling Cavity Exitance Coefficients(CCEC)									
0.0	.219	.219	.219	.187	.187	.187	.127	.127	.127	.073	.073	.073	.023	.023	.023	
1.0	.212	.184	.159	.181	.158	.137	.124	.109	.095	.071	.063	.055	.023	.020	.018	
2.0	.205	.160	.123	.176	.138	.106	.120	.095	.074	.069	.056	.043	.022	.018	.014	
3.0	.198	.143	.099	.170	.123	.086	.117	.086	.060	.067	.050	.036	.022	.016	.012	
4.0	.191	.130	.084	.164	.113	.073	.113	.078	.051	.065	.046	.030	.021	.015	.010	
5.0	.184	.120	.073	.158	.104	.064	.109	.073	.045	.063	.043	.027	.020	.014	.009	
6.0	.176	.112	.066	.152	.097	.057	.105	.068	.041	.061	.040	.024	.020	.013	.008	
7.0	.169	.105	.060	.146	.091	.053	.101	.064	.037	.059	.038	.022	.019	.012	.007	
8.0	.163	.100	.056	.140	.086	.049	.097	.061	.035	.056	.036	.021	.018	.012	.007	
9.0	.156	.095	.053	.135	.082	.046	.093	.058	.033	.054	.034	.020	.018	.011	.007	
10.0	.150	.090	.051	.130	.079	.044	.090	.055	.031	.052	.033	.019	.017	.011	.006	

C Range: 0 - 360DEG
 C Interval: 30.0DEG
 Test Speed: HIGH
 Temperature:25.3DEG
 Operators:DAMIN
 Test Date:2024-06-09

γ Range: 0 - 180DEG
 γ Interval: 1.0DEG
 Test System:EVERFINE GO-2000B_V1 SYSTEM V2.00.426
 Humidity:65.0%
 Test Distance:12.550m [K=1.0000]
 Remarks:

UGR(Unified Glare Rating) Table

Test:U:120.29V I:0.6589A P:78.904W PF:0.9955 Freq:59.98Hz UTHDi:0% ITHDi:0%						Lamp Flux:10859.7x1 lm				
NAME: TS-GCP1110-100W-TCP			TYPE:			WEIGHT:				
SPEC.:			DIM.:			SERIAL No.:				
MFR.:			SUR.:			Shielding Angle:				
ceiling/cavity	0.7	0.7	0.5	0.5	0.3	0.7	0.7	0.5	0.5	0.3
walls	0.5	0.3	0.5	0.3	0.3	0.5	0.3	0.5	0.3	0.3
working plane	0.2	0.2	0.2	0.2	0.2	0.2	0.2	0.2	0.2	0.2
Room dimensions	Viewed crosswise					Viewed endwise				
x = 2H y = 2H	27.1	28.8	27.5	29.2	29.6	27.0	28.7	27.4	29.1	29.5
3H	28.5	30.0	28.9	30.4	30.9	28.5	30.0	28.9	30.4	30.9
4H	28.9	30.3	29.3	30.7	31.2	28.8	30.3	29.3	30.7	31.2
6H	29.2	30.5	29.7	31.0	31.5	29.1	30.5	29.6	30.9	31.4
8H	29.4	30.7	29.8	31.1	31.6	29.3	30.6	29.8	31.1	31.5
12H	29.6	30.8	30.0	31.3	31.8	29.5	30.8	30.0	31.2	31.7
4H 2H	28.1	29.5	28.5	30.0	30.4	28.0	29.5	28.5	29.9	30.3
3H	29.7	30.9	30.2	31.4	31.9	29.8	31.0	30.2	31.5	31.9
4H	30.2	31.3	30.7	31.8	32.3	30.3	31.4	30.8	31.9	32.4
6H	30.6	31.6	31.2	32.1	32.7	30.7	31.7	31.2	32.2	32.7
8H	30.9	31.8	31.4	32.3	32.9	30.9	31.9	31.4	32.4	32.9
12H	31.2	32.0	31.7	32.5	33.1	31.2	32.0	31.7	32.6	33.1
8H 4H	30.6	31.6	31.2	32.1	32.6	30.7	31.6	31.2	32.2	32.7
6H	31.3	32.1	31.8	32.6	33.2	31.4	32.1	31.9	32.7	33.2
8H	31.7	32.4	32.2	32.9	33.5	31.7	32.4	32.3	33.0	33.5
12H	32.1	32.7	32.6	33.2	33.9	32.1	32.7	32.7	33.3	33.9
12H 4H	30.7	31.5	31.2	32.1	32.6	30.8	31.6	31.3	32.2	32.7
6H	31.4	32.1	32.0	32.7	33.3	31.5	32.2	32.1	32.7	33.4
8H	31.9	32.5	32.4	33.1	33.7	32.0	32.6	32.5	33.1	33.8
CIE190: 2010										

CIE190: 2010
Area: 0.07 m2

C Range: 0 - 360DEG
C Interval: 30.0DEG
Test Speed: HIGH
Temperature:25.3DEG
Operators:DAMIN
Test Date:2024-06-09

γ Range: 0 - 180DEG
γ Interval: 1.0DEG
Test System:EVERFINE GO-2000B_V1 SYSTEM V2.00.426
Humidity:65.0%
Test Distance:12.550m [K=1.0000]
Remarks:

UTILIZATION FACTORS TABLE

Test:U:120.29V I:0.6589A P:78.904W PF:0.9955 Freq:59.98Hz UTHDi:0% ITHDi:0%			Lamp Flux:10859.7x1 lm
NAME: TS-GCP1110-100W-TCP	TYPE:	WEIGHT:	
SPEC.:	DIM.:	SERIAL No.:	
MFR.:	SUR.:	Shielding Angle:	

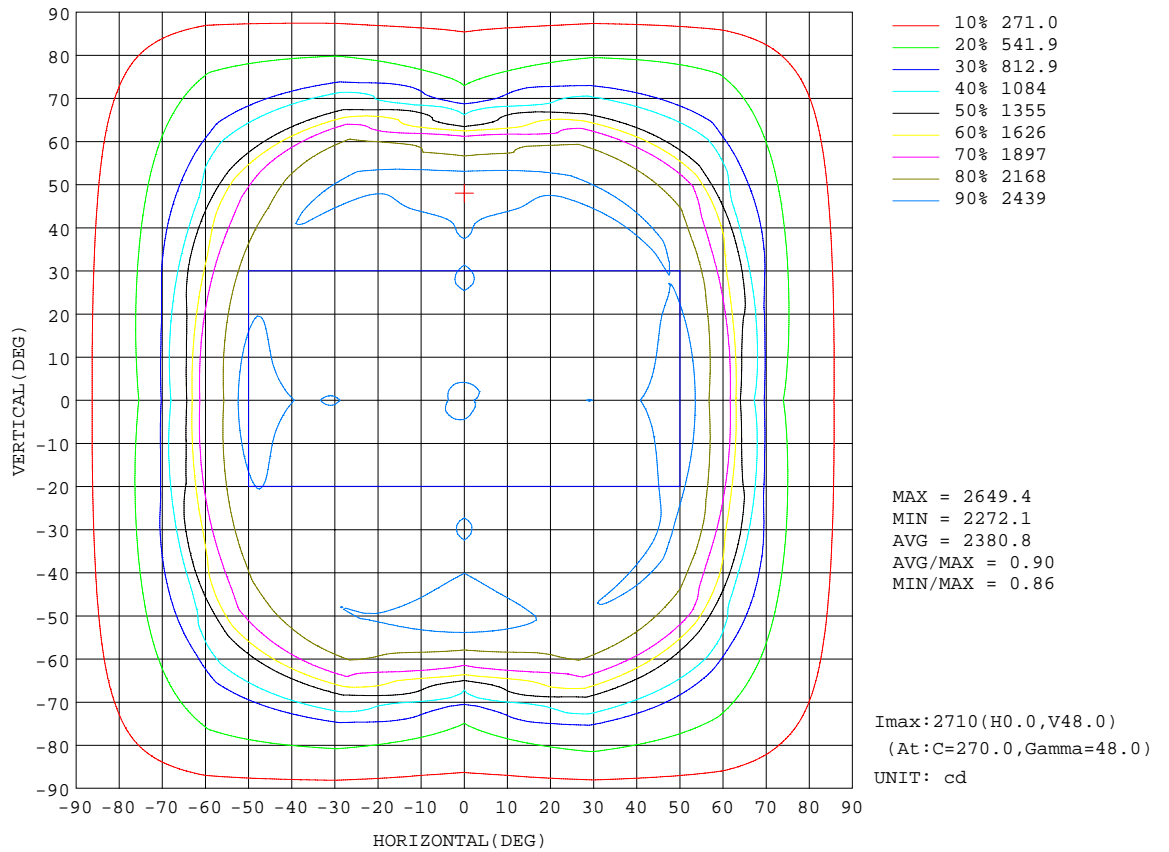
REFLECTANCE										
Ceiling	0.8	0.8	0.8	0.7	0.7	0.7	0.5	0.5	0.5	0
Walls	0.7	0.5	0.3	0.7	0.5	0.3	0.7	0.5	0.3	0
Working plane	0.2	0.2	0.2	0.2	0.2	0.2	0.2	0.2	0.2	0
ROOM INDEX	UTILIZATION FACTORS(PERCENT) $k(RI) \times RCR = 5$									
k = 0.60	50	37	29	49	37	29	48	36	29	22
0.80	60	47	39	59	47	39	57	46	38	30
1.00	69	56	48	68	56	48	65	57	47	39
1.25	77	64	56	75	64	56	72	62	55	46
1.50	82	71	62	80	69	62	76	67	61	52
2.00	90	80	72	88	78	71	83	76	70	60
2.50	94	85	78	92	84	77	87	80	75	65
3.00	98	90	84	96	88	82	91	85	80	70
4.00	103	96	91	100	94	89	95	90	86	75
5.00	106	100	95	103	98	93	98	93	90	79
ROOM INDEX	UF(total)									Direct
According to DIN EN 13032-2 2004			Suspended				SHRNOM = 1.25			

C Range: 0 - 360DEG
 C Interval: 30.0DEG
 Test Speed: HIGH
 Temperature:25.3DEG
 Operators:DAMIN
 Test Date:2024-06-09

γ Range: 0 - 180DEG
 γ Interval: 1.0DEG
 Test System:EVERFINE GO-2000B_V1 SYSTEM V2.00.426
 Humidity:65.0%
 Test Distance:12.550m [K=1.0000]
 Remarks:

ISOCANDELA DIAGRAM

Test:U:120.29V I:0.6589A P:78.904W PF:0.9955 Freq:59.98Hz UTHDi:0% ITHDi:0% Lamp Flux:10859.7x1 lm		
NAME: TS-GCP1110-100W-TCP	TYPE:	WEIGHT:
SPEC.:	DIM.:	SERIAL No.:
MFR.:	SUR.:	Shielding Angle:



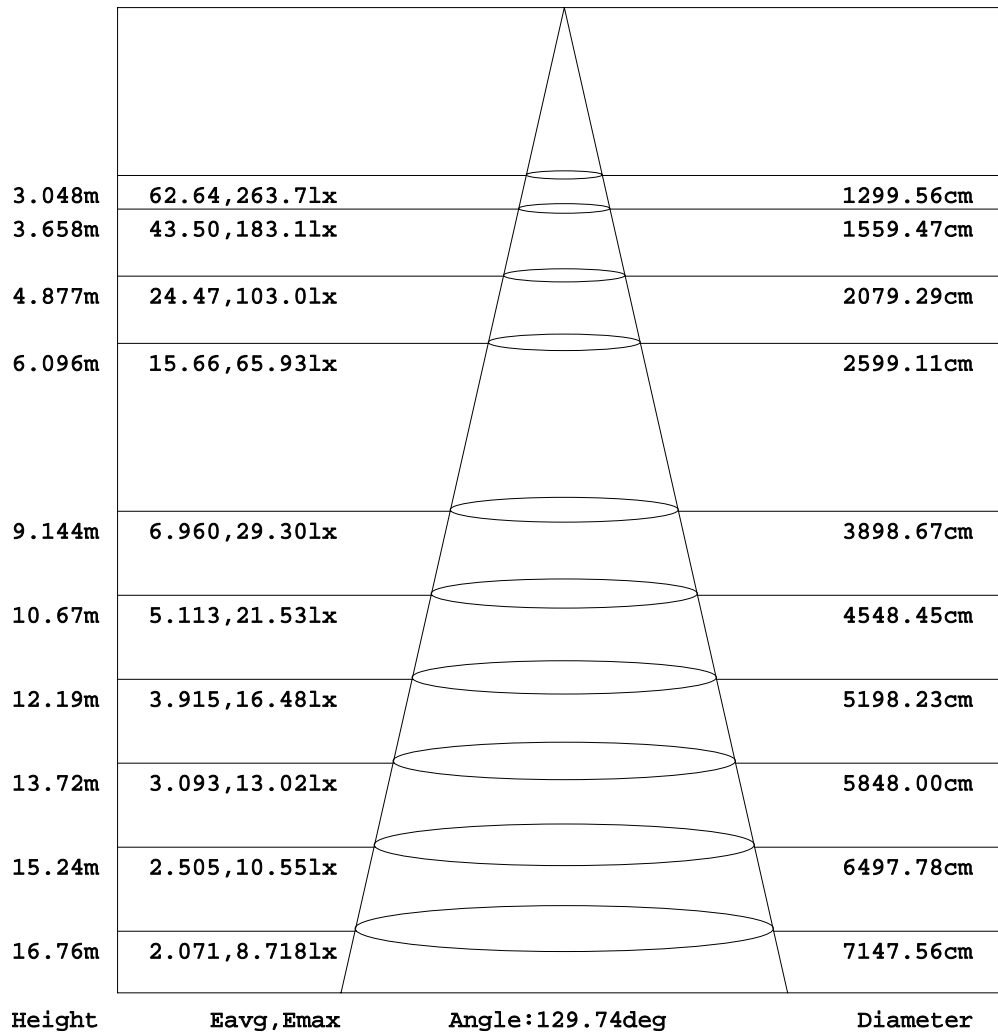
C Range: 0 - 360DEG
 C Interval: 30.0DEG
 Test Speed: HIGH
 Temperature: 25.3DEG
 Operators: DAMIN
 Test Date: 2024-06-09

γ Range: 0 - 180DEG
 γ Interval: 1.0DEG
 Test System: EVERFINE GO-2000B_V1 SYSTEM V2.00.426
 Humidity: 65.0%
 Test Distance: 12.550m [K=1.0000]
 Remarks:

AAI Figure

Test:U:120.29V I:0.6589A P:78.904W PF:0.9955 Freq:59.98Hz UTHDi:0% ITHDi:0% Lamp Flux:10859.7x1 lm		
NAME: TS-GCP1110-100W-TCP	TYPE:	WEIGHT:
SPEC.:	DIM.:	SERIAL No.:
MFR.:	SUR.:	Shielding Angle:

Flux out:8407 lm



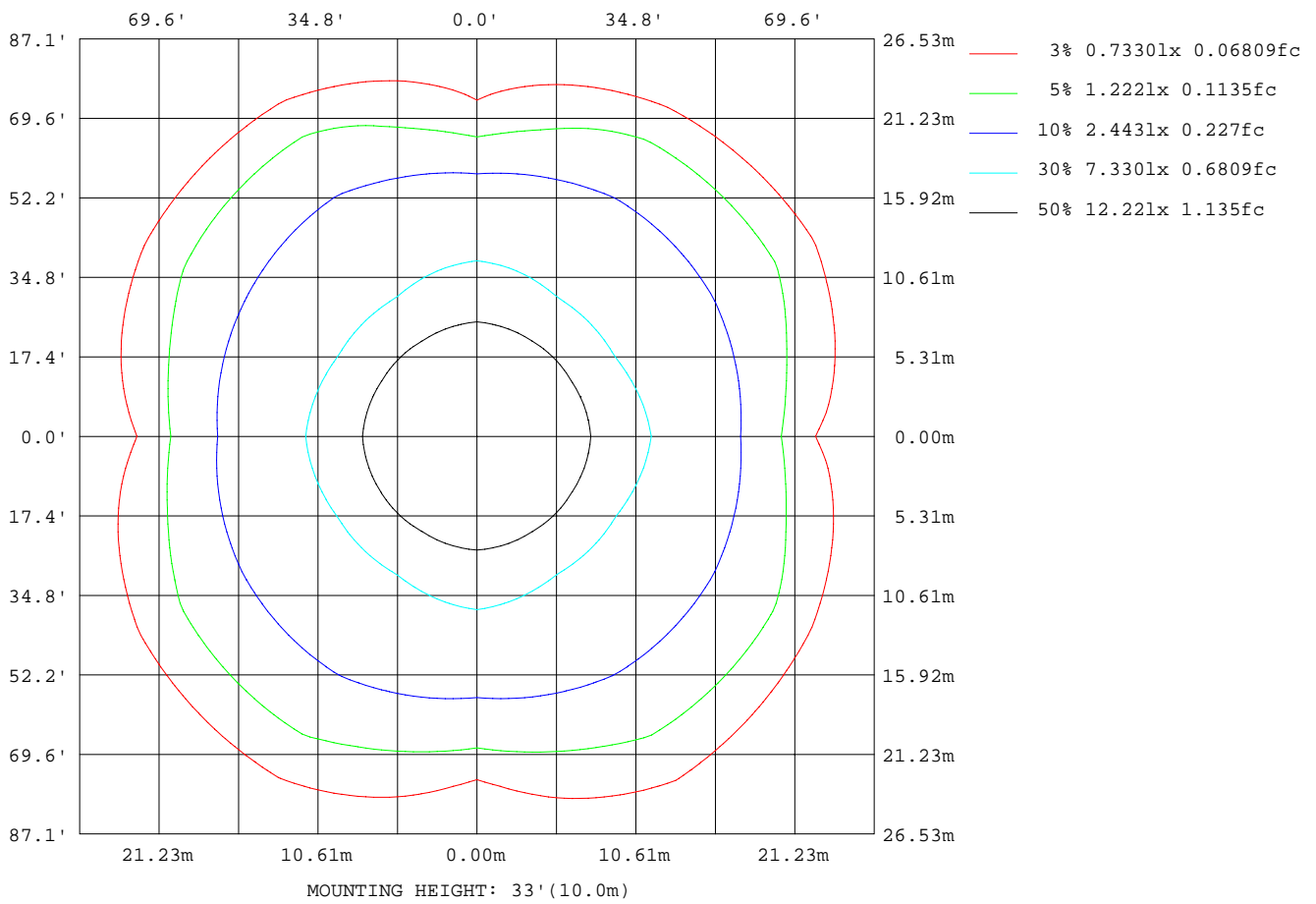
Note: The Curves indicate the illuminated area and the average illumination when the luminaire is at different distance.

C Range: 0 - 360DEG
 C Interval: 30.0DEG
 Test Speed: HIGH
 Temperature: 25.3DEG
 Operators: DAMIN
 Test Date: 2024-06-09

γ Range: 0 - 180DEG
 γ Interval: 1.0DEG
 Test System: EVERFINE GO-2000B_V1 SYSTEM V2.00.426
 Humidity: 65.0%
 Test Distance: 12.550m [K=1.0000]
 Remarks:

ISOLUX DIAGRAM

Test:U:120.29V I:0.6589A P:78.904W PF:0.9955 Freq:59.98Hz UTHDi:0% ITHDi:0% Lamp Flux:10859.7x1 lm		
NAME: TS-GCP1110-100W-TCP	TYPE:	WEIGHT:
SPEC.:	DIM.:	SERIAL No.:
MFR.:	SUR.:	Shielding Angle:



C Range: 0 - 360DEG
 C Interval: 30.0DEG
 Test Speed: HIGH
 Temperature:25.3DEG
 Operators:DAMIN
 Test Date:2024-06-09

γ Range: 0 - 180DEG
 γ Interval: 1.0DEG
 Test System:EVERFINE GO-2000B_V1 SYSTEM V2.00.426
 Humidity:65.0%
 Test Distance:12.550m [K=1.0000]
 Remarks:

LED Avg.L Report

Test:U:120.29V I:0.6589A P:78.904W PF:0.9955 Freq:59.98Hz UTHDi:0% ITHDi:0% Lamp Flux:10859.7x1 lm		
NAME: TS-GCP1110-100W-TCP	TYPE:	WEIGHT:
SPEC.:	DIM.:	SERIAL No.:
MFR.:	SUR.:	Shielding Angle:

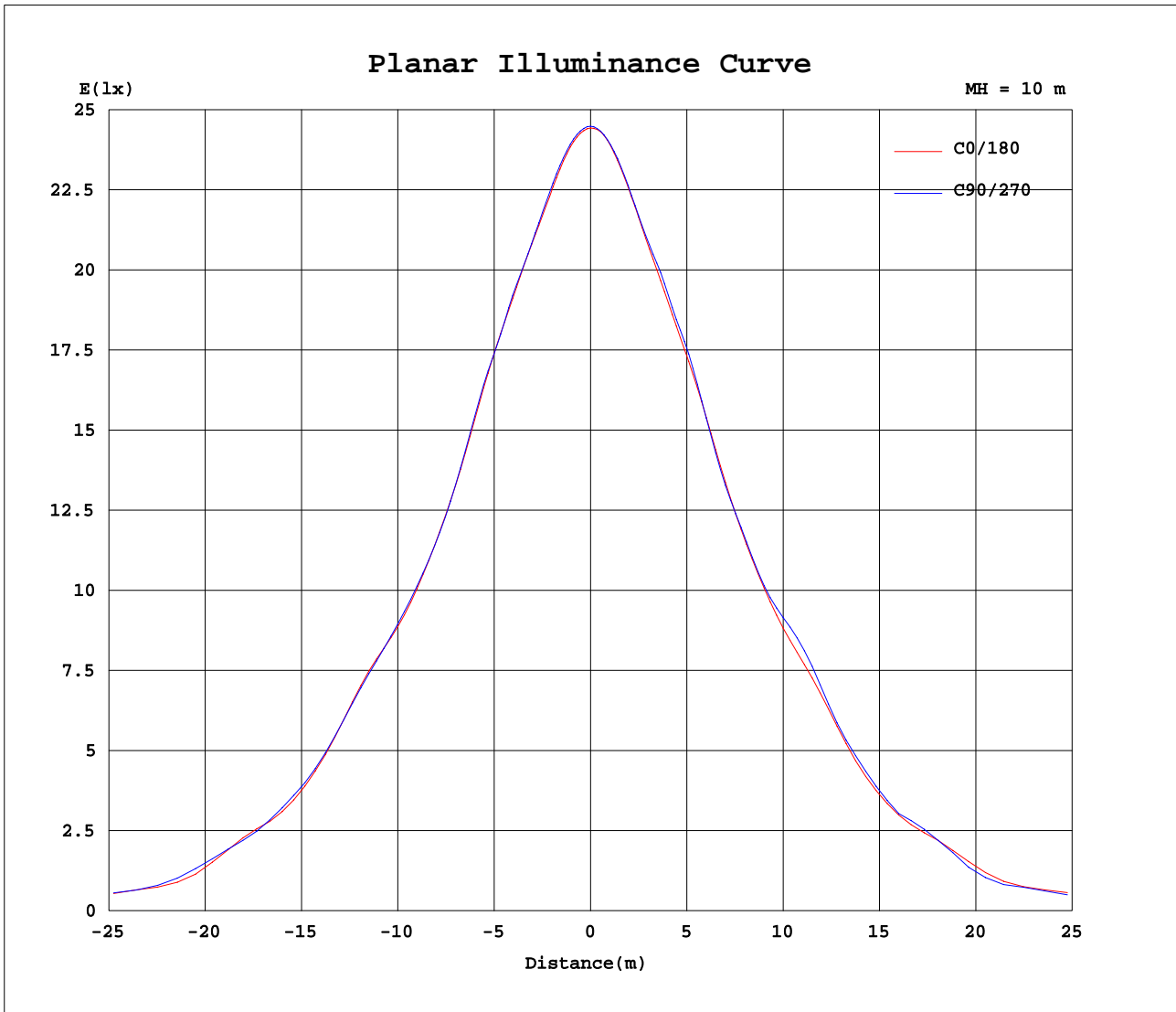
AvgL	cd/m2
L_0~180(65)av	40669
L_0~180(75)av	29478
L_0~180(85)av	49705
L_90~270(65)av	41183
L_90~270(75)av	28262
L_90~270(85)av	48589
L_45(65)av	71761
L_45(75)av	55278
L_45(85)av	73937

Standard: GB/T 29293-2012

C Range: 0 - 360DEG
 C Interval: 30.0DEG
 Test Speed: HIGH
 Temperature:25.3DEG
 Operators:DAMIN
 Test Date:2024-06-09

γ Range: 0 - 180DEG
 γ Interval: 1.0DEG
 Test System:EVERFINE GO-2000B_V1 SYSTEM V2.00.426
 Humidity:65.0%
 Test Distance:12.550m [K=1.0000]
 Remarks:

Planar Illuminance Curve



C Range: 0 - 360DEG
 C Interval: 30.0DEG
 Test Speed: HIGH
 Temperature: 25.3DEG
 Operators: DAMIN
 Test Date: 2024-06-09

γ Range: 0 - 180DEG
 γ Interval: 1.0DEG
 Test System: EVERFINE GO-2000B_V1 SYSTEM V2.00.426
 Humidity: 65.0%
 Test Distance: 12.550m [K=1.0000]
 Remarks: