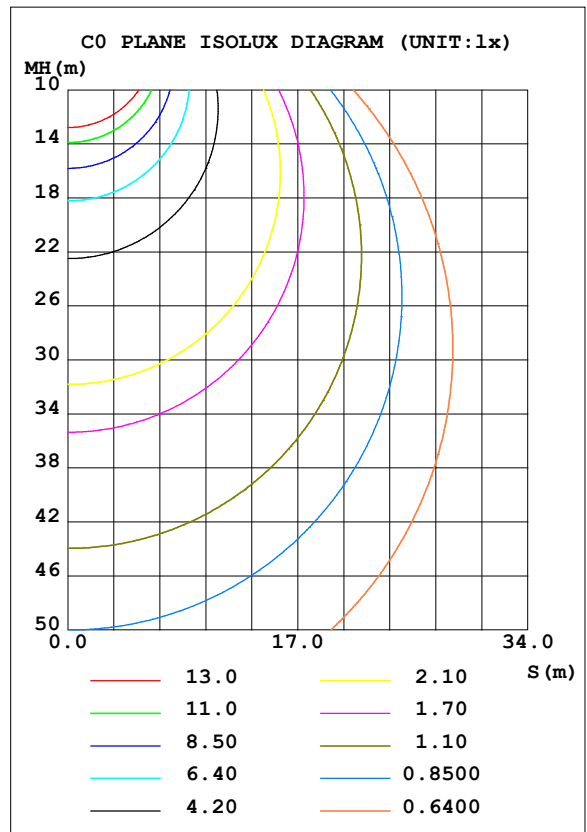
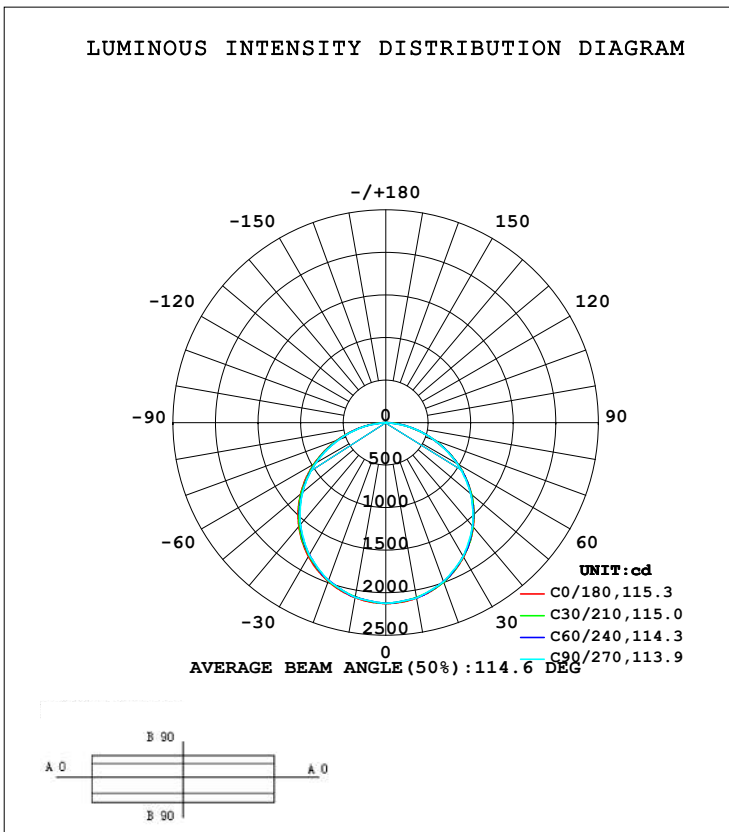


LUMINAIRE PHOTOMETRIC TEST REPORT

Test:U:120.42V I:0.4071A P:48.716W PF:0.9936 Freq:59.98Hz UTHDi:0.00% ITHDi:0.00% KDisp:0 Lamp Flux:6175.46x1 lm		
NAME: BPL2-1212X603-50W-P-TCP 3500K	TYPE:	WEIGHT:
SPEC.:	DIM.:	SERIAL No.:
MFR.: EVERFINE	SUR.: 1.155*0.545	Shielding Angle:

DATA OF LAMP		PHOTOMETRIC DATA Eff: 126.76 lm/W			
MODEL	BPL2-1212X603-50W-P-TCP 3500K	I <sub>max</sub> (cd)	2125	S/MH (C0/180)	1.27
NOMINAL POWER (W)	50	LOR (%)	100.0	S/MH (C90/270)	1.26
RATED VOLTAGE (V)	120	TOTAL FLUX (lm)	6175.5	η UP, DN (C0-180)	0.0, 50.2
NOMINAL FLUX (lm)	6175.46	CIE CLASS	DIRECT	η UP, DN (C180-360)	0.0, 49.8
LAMPS INSIDE	1	η up (%)	0.0	CIBSE SHR NOM	1.25
TEST VOLTAGE (V)	120	η down (%)	100.0	CIBSE SHR MAX	1.35



H(β) Range: -90 - 90DEG  
 H(β) Interval: 1.0DEG  
 Test Speed: HIGH  
 Temperature: 25.3DEG  
 Operators: DAMIN  
 Test Date: 2023-06-22

V(B) Range: -80 - 80DEG  
 V(B) Interval: 5.0DEG  
 Test System: EVERFINE GO-2000A\_V1 SYSTEM V2.00.446  
 Humidity: 65.0%  
 Test Distance: 7.200m [K=1.0000]  
 Remarks:

## ZONAL FLUX DIAGRAM

## ZONAL FLUX DIAGRAM:

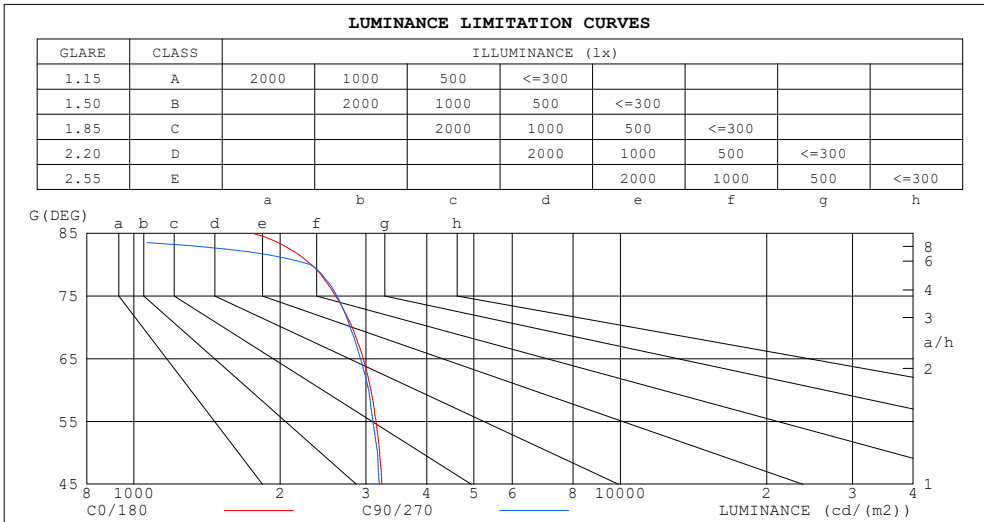
$\gamma$	C0	C45	C90	C135	C180	C225	C270	C315	$\gamma$	$\Phi$ zone	$\Phi$ total	%lum,lamp
10	2093	2087	2092	2082	2088	2078	2085	2082	0- 10	200.5	200.5	3.25,3.25
20	1993	1986	1989	1976	1984	1969	1975	1976	10- 20	575.8	776.4	12.6,12.6
30	1827	1822	1819	1811	1817	1802	1798	1807	20- 30	877.0	1653	26.8,26.8
40	1599	1599	1588	1582	1591	1574	1565	1581	30- 40	1065	2719	44,44
50	1317	1314	1304	1301	1309	1293	1281	1295	40- 50	1115	3834	62.1,62.1
60	983.2	984.2	972.9	967.9	977.5	959.6	949.8	966.8	50- 60	1017	4851	78.6,78.6
70	615.1	617.6	609.4	608.0	612.2	599.2	585.1	601.5	60- 70	779.9	5631	91.2,91.2
80	257.2	267.4	257.1	261.2	255.0	252.6	235.3	255.3	70- 80	448.9	6080	98.5,98.5
90	10.12	0	0	0	9.537	0	0	0	80- 90	95.53	6175	100,100
100									90-100			
110									100-110			
120									110-120			
130									120-130			
140									130-140			
150									140-150			
160									150-160			
170									160-170			
180									170-180			
DEG	LUMINOUS INTENSITY:cd									UNIT:lm		

$H(\beta)$  Range:-90 - 90DEG  
 $H(\beta)$  Interval: 1.0DEG  
 Test Speed: HIGH  
 Temperature:25.3DEG  
 Operators:DAMIN  
 Test Date:2023-06-22

$V(B)$  Range:-80 - 80DEG  
 $V(B)$  Interval: 5.0DEG  
 Test System:EVERFINE GO-2000A\_V1 SYSTEM V2.00.446  
 Humidity:65.0%  
 Test Distance:7.200m [K=1.0000]  
 Remarks:

LUMINANCE LIMITATION CURVES

Test:U:120.42V I:0.4071A P:48.716W PF:0.9936 Freq:59.98Hz UTHDi:0.00% ITHDi:0.00% KDisp:0 Lamp Flux:6175.46x1 lm		
NAME: BPL2-1212X603-50W-P-TCP 3500K	TYPE:	WEIGHT:
SPEC.:	DIM.:	SERIAL No.:
MFR.: EVERFINE	SUR.: 1.155*0.545	Shielding Angle:



LUMINANCE cd/(m2)		
G (DEG)	C0/180	C90/270
85	1753	0
80	2314	2313
75	2600	2616
70	2810	2784
65	2962	2925
60	3072	3040
55	3148	3102
50	3201	3170
45	3238	3196

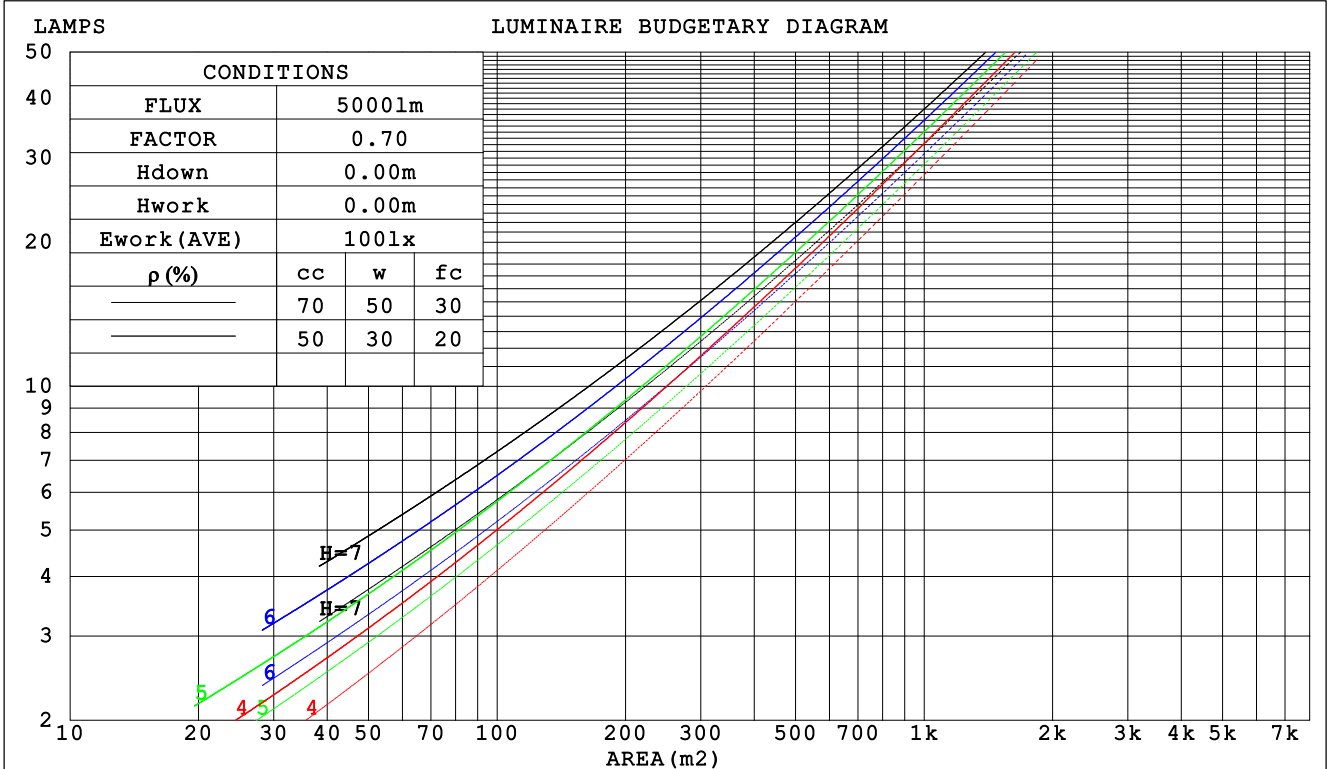
H( $\beta$ ) Range:-90 - 90DEG  
H( $\beta$ ) Interval: 1.0DEG  
Test Speed: HIGH  
Temperature:25.3DEG  
Operators:DAMIN  
Test Date:2023-06-22

V(B) Range:-80 - 80DEG  
V(B) Interval: 5.0DEG  
Test System:EVERFINE GO-2000A\_V1 SYSTEM V2.00.446  
Humidity:65.0%  
Test Distance:7.200m [K=1.0000]  
Remarks:

CU AND LUMINAIRE BUDGETARY ESTIMATE DIAGRAM

Test:U:120.42V I:0.4071A P:48.716W PF:0.9936 Freq:59.98Hz UTHDi:0.00% ITHDi:0.00% KDisp:0 Lamp Flux:6175.46x1 lm		
NAME: BPL2-1212X603-50W-P-TCP 3500K	TYPE:	WEIGHT:
SPEC.:	DIM.:	SERIAL No.:
MFR.: EVERFINE	SUR.: 1.155*0.545	Shielding Angle:

ρcc	80%			70%			50%			30%			10%			0
ρw	50%	30%	10%	50%	30%	10%	50%	30%	10%	50%	30%	10%	50%	30%	10%	0
ρfc	20%			20%			20%			20%			20%			0
RCR	RCR:Room Cavity Ratio						Coefficients of Utilization(CU)									
0.0	1.19	1.19	1.19	1.16	1.16	1.16	1.11	1.11	1.11	1.06	1.06	1.06	1.02	1.02	1.02	1.00
1.0	1.04	.00	.96	1.02	.98	.94	.97	.94	.91	.93	.91	.88	.90	.88	.86	.84
2.0	.90	.83	.78	.88	.82	.77	.85	.80	.75	.82	.77	.73	.79	.75	.72	.69
3.0	.79	.71	.64	.78	.70	.64	.75	.68	.63	.72	.66	.62	.69	.65	.60	.58
4.0	.70	.61	.54	.69	.60	.54	.66	.59	.53	.64	.58	.52	.62	.56	.52	.50
5.0	.62	.53	.47	.61	.53	.46	.59	.52	.46	.57	.51	.45	.55	.50	.45	.43
6.0	.56	.47	.41	.55	.47	.40	.53	.46	.40	.52	.45	.40	.50	.44	.39	.37
7.0	.51	.42	.36	.50	.42	.36	.49	.41	.35	.47	.40	.35	.46	.40	.35	.33
8.0	.46	.38	.32	.46	.38	.32	.44	.37	.32	.43	.36	.31	.42	.36	.31	.29
9.0	.43	.34	.29	.42	.34	.29	.41	.34	.28	.40	.33	.28	.39	.33	.28	.26
10.0	.39	.31	.26	.39	.31	.26	.38	.31	.26	.37	.30	.26	.36	.30	.26	.24



H(β) Range:-90 - 90DEG  
H(β) Interval: 1.0DEG  
Test Speed: HIGH  
Temperature:25.3DEG  
Operators:DAMIN  
Test Date:2023-06-22

V(B) Range:-80 - 80DEG  
V(B) Interval: 5.0DEG  
Test System:EVERFINE GO-2000A\_V1 SYSTEM V2.00.446  
Humidity:65.0%  
Test Distance:7.200m [K=1.0000]  
Remarks:

WEC AND CCEC

Test:U:120.42V I:0.4071A P:48.716W PF:0.9936 Freq:59.98Hz UTHDi:0.00% ITHDi:0.00% KDisp:0 Lamp Flux:6175.46x1 lm		
NAME: BPL2-1212X603-50W-P-TCP 3500K	TYPE:	WEIGHT:
SPEC.:	DIM.:	SERIAL No.:
MFR.: EVERFINE	SUR.: 1.155*0.545	Shielding Angle:

$\rho_{cc}$	80%			70%			50%			30%			10%			0
$\rho_w$	50%	30%	10%	50%	30%	10%	50%	30%	10%	50%	30%	10%	50%	30%	10%	0
$\rho_{fc}$	20%			20%			20%			20%			20%			0
RCR	RCR:Room Cavity Ratio						Wall Exitance Coefficients (WEC)									
0.0																
1.0	.309	.176	.056	.302	.172	.055	.289	.166	.053	.276	.159	.051	.265	.154	.050	
2.0	.292	.160	.049	.286	.158	.049	.274	.153	.047	.264	.148	.046	.254	.143	.045	
3.0	.271	.144	.043	.265	.142	.043	.255	.138	.042	.246	.135	.041	.237	.131	.041	
4.0	.250	.130	.038	.245	.128	.038	.236	.125	.037	.228	.122	.037	.220	.119	.036	
5.0	.231	.118	.034	.227	.117	.034	.219	.114	.034	.211	.111	.033	.204	.109	.033	
6.0	.215	.108	.031	.211	.106	.031	.203	.104	.030	.197	.102	.030	.190	.100	.030	
7.0	.200	.099	.028	.196	.098	.028	.190	.096	.028	.184	.094	.027	.178	.092	.027	
8.0	.186	.091	.026	.183	.090	.026	.178	.089	.025	.172	.087	.025	.167	.086	.025	
9.0	.175	.084	.024	.172	.084	.024	.167	.082	.023	.162	.081	.023	.157	.080	.023	
10.0	.164	.079	.022	.162	.078	.022	.157	.077	.022	.153	.076	.022	.148	.075	.021	

$\rho_{cc}$	80%			70%			50%			30%			10%			0
$\rho_w$	50%	30%	10%	50%	30%	10%	50%	30%	10%	50%	30%	10%	50%	30%	10%	0
$\rho_{fc}$	20%			20%			20%			20%			20%			0
RCR	RCR:Room Cavity Ratio						Ceiling Cavity Exitance Coefficients (CCEC)									
0.0	.190	.190	.190	.163	.163	.163	.111	.111	.111	.064	.064	.064	.020	.020	.020	
1.0	.180	.156	.134	.154	.134	.116	.105	.092	.080	.061	.053	.047	.019	.017	.015	
2.0	.172	.132	.098	.148	.114	.085	.101	.079	.059	.058	.046	.035	.019	.015	.011	
3.0	.165	.114	.074	.141	.099	.064	.097	.069	.045	.056	.040	.027	.018	.013	.009	
4.0	.157	.101	.058	.135	.087	.051	.093	.061	.036	.054	.036	.021	.017	.012	.007	
5.0	.150	.091	.047	.129	.078	.041	.089	.055	.029	.051	.032	.017	.017	.010	.006	
6.0	.143	.082	.039	.123	.071	.034	.085	.050	.024	.049	.029	.014	.016	.010	.005	
7.0	.136	.075	.033	.117	.065	.029	.081	.046	.020	.047	.027	.012	.015	.009	.004	
8.0	.129	.070	.029	.111	.060	.025	.077	.042	.018	.045	.025	.011	.014	.008	.003	
9.0	.123	.065	.025	.106	.056	.022	.074	.039	.016	.043	.023	.009	.014	.008	.003	
10.0	.117	.060	.022	.101	.052	.020	.070	.037	.014	.041	.022	.008	.013	.007	.003	

H( $\beta$ ) Range:-90 - 90DEG  
H( $\beta$ ) Interval: 1.0DEG  
Test Speed: HIGH  
Temperature:25.3DEG  
Operators:DAMIN  
Test Date:2023-06-22

V(B) Range:-80 - 80DEG  
V(B) Interval: 5.0DEG  
Test System:EVERFINE GO-2000A\_V1 SYSTEM V2.00.446  
Humidity:65.0%  
Test Distance:7.200m [K=1.0000]  
Remarks:

UGR(Unified Glare Rating) Table

Test:U:120.42V I:0.4071A P:48.716W PF:0.9936 Freq:59.98Hz UTHDi:0.00% ITHDi:0.00% KDisp:0 Lamp Flux:6175.46x1 lm										
NAME: BPL2-1212X603-50W-P-TCP 3500K					TYPE:			WEIGHT:		
SPEC.:					DIM.:			SERIAL No.:		
MFR.: EVERFINE					SUR.: 1.155*0.545			Shielding Angle:		
ceiling/cavity	0.7	0.7	0.5	0.5	0.3	0.7	0.7	0.5	0.5	0.3
walls	0.5	0.3	0.5	0.3	0.3	0.5	0.3	0.5	0.3	0.3
working plane	0.2	0.2	0.2	0.2	0.2	0.2	0.2	0.2	0.2	0.2
Room dimensions	Viewed crosswise					Viewed endwise				
x = 2H y = 2H	16.3	17.9	16.6	18.2	18.6	16.2	17.8	16.5	18.1	18.4
3H	18.1	19.6	18.5	19.9	20.3	18.0	19.5	18.4	19.8	20.2
4H	18.8	20.2	19.2	20.5	20.9	18.7	20.1	19.1	20.5	20.8
6H	19.2	20.5	19.6	20.9	21.3	19.2	20.5	19.6	20.9	21.3
8H	19.3	20.6	19.8	21.0	21.4	19.3	20.6	19.7	20.9	21.3
12H	19.4	20.6	19.8	21.0	21.4	19.3	20.5	19.7	20.9	21.3
4H 2H	16.9	18.3	17.3	18.7	19.1	16.8	18.2	17.2	18.6	18.9
3H	19.0	20.2	19.4	20.6	21.0	18.9	20.0	19.3	20.4	20.8
4H	19.8	20.8	20.2	21.3	21.7	19.7	20.8	20.1	21.2	21.6
6H	20.3	21.3	20.8	21.7	22.2	20.3	21.3	20.8	21.7	22.2
8H	20.5	21.4	21.0	21.8	22.3	20.5	21.3	20.9	21.8	22.3
12H	20.6	21.4	21.1	21.8	22.3	20.5	21.3	21.0	21.7	22.2
8H 4H	20.1	21.0	20.6	21.4	21.9	20.0	20.9	20.5	21.3	21.8
6H	20.8	21.5	21.3	22.0	22.5	20.8	21.5	21.3	22.0	22.5
8H	21.0	21.7	21.5	22.2	22.7	21.0	21.6	21.5	22.1	22.6
12H	21.2	21.8	21.7	22.3	22.8	21.0	21.6	21.5	22.0	22.6
12H 4H	20.1	20.9	20.6	21.4	21.9	20.1	20.8	20.5	21.3	21.8
6H	20.9	21.5	21.4	22.0	22.5	20.9	21.5	21.4	22.0	22.5
8H	21.2	21.7	21.7	22.2	22.8	21.1	21.6	21.6	22.1	22.7
CIE190: 2010										

CIE190: 2010  
Area: 0.64 m2

H( $\beta$ ) Range:-90 - 90DEG	V(B) Range:-80 - 80DEG
H( $\beta$ ) Interval: 1.0DEG	V(B) Interval: 5.0DEG
Test Speed: HIGH	Test System:EVERFINE GO-2000A_V1 SYSTEM V2.00.446
Temperature:25.3DEG	Humidity:65.0%
Operators:DAMIN	Test Distance:7.200m [K=1.0000]
Test Date:2023-06-22	Remarks:

## UTILIZATION FACTORS TABLE

Test:U:120.42V I:0.4071A P:48.716W PF:0.9936 Freq:59.98Hz UTHDi:0.00% ITHDi:0.00% KDisp:0 Lamp Flux:6175.46x1 lm		
NAME: BPL2-1212X603-50W-P-TCP 3500K	TYPE:	WEIGHT:
SPEC.:	DIM.:	SERIAL No.:
MFR.: EVERFINE	SUR.: 1.155*0.545	Shielding Angle:

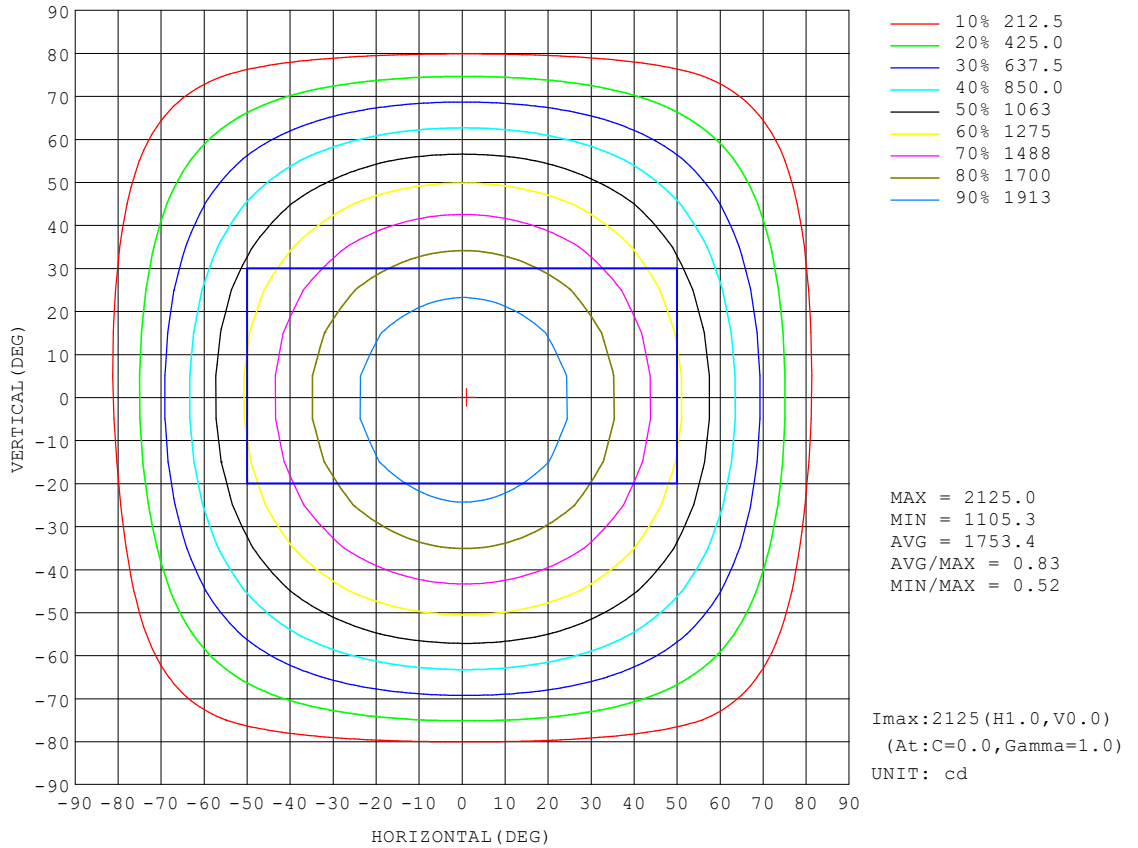
REFLECTANCE										
Ceiling	0.8	0.8	0.8	0.7	0.7	0.7	0.5	0.5	0.5	0
Walls	0.7	0.5	0.3	0.7	0.5	0.3	0.7	0.5	0.3	0
Working plane	0.2	0.2	0.2	0.2	0.2	0.2	0.2	0.2	0.2	0
ROOM INDEX	UTILIZATION FACTORS (PERCENT) k(RI) x RCR = 5									
k = 0.60	57	45	38	56	45	38	55	45	38	32
0.80	67	56	48	66	55	48	64	54	48	41
1.00	76	65	57	74	64	57	72	65	56	49
1.25	83	72	65	81	72	65	79	70	64	57
1.50	88	78	71	86	77	70	83	75	69	62
2.00	95	86	80	93	85	79	89	83	77	70
2.50	99	91	85	97	90	84	93	87	82	74
3.00	102	95	90	100	94	89	96	91	87	78
4.00	106	101	96	104	99	95	100	95	92	83
5.00	109	104	100	106	102	98	102	98	95	86
ROOM INDEX	UF(total)									Direct
According to DIN EN 13032-2 2004			Suspended				SHRNOM = 1.25			

H( $\beta$ ) Range:-90 - 90DEG  
H( $\beta$ ) Interval: 1.0DEG  
Test Speed: HIGH  
Temperature:25.3DEG  
Operators:DAMIN  
Test Date:2023-06-22

V(B) Range:-80 - 80DEG  
V(B) Interval: 5.0DEG  
Test System:EVERFINE GO-2000A\_V1 SYSTEM V2.00.446  
Humidity:65.0%  
Test Distance:7.200m [K=1.0000]  
Remarks:

ISOCANDELA DIAGRAM

Test:U:120.42V I:0.4071A P:48.716W PF:0.9936 Freq:59.98Hz UTHDi:0.00% ITHDi:0.00% KDisp:0 Lamp Flux:6175.46x1 lm		
NAME: BPL2-1212X603-50W-P-TCP 3500K	TYPE:	WEIGHT:
SPEC.:	DIM.:	SERIAL No.:
MFR.: EVERFINE	SUR.: 1.155*0.545	Shielding Angle:



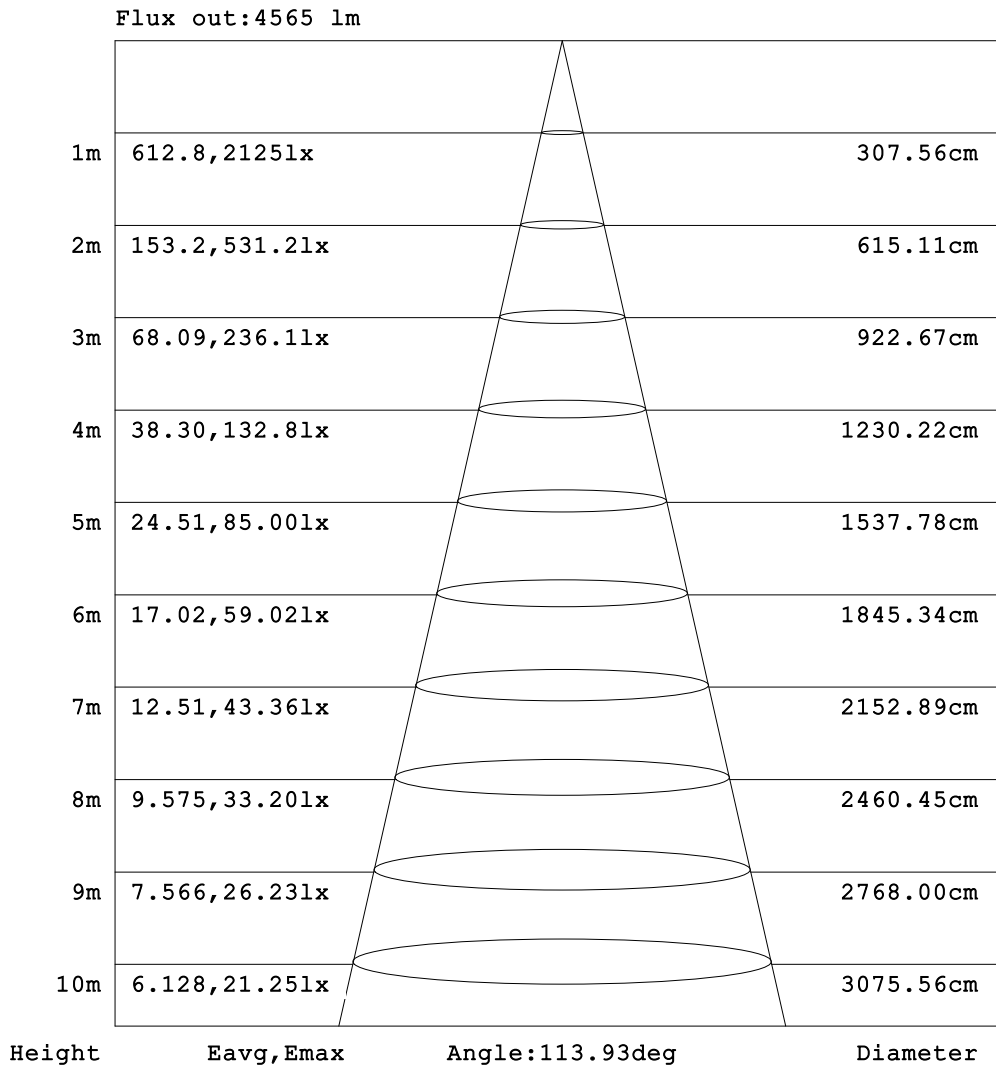
H(β) Range:-90 - 90DEG  
 H(β) Interval: 1.0DEG  
 Test Speed: HIGH  
 Temperature:25.3DEG  
 Operators:DAMIN  
 Test Date:2023-06-22

V(B) Range:-80 - 80DEG  
 V(B) Interval: 5.0DEG  
 Test System:EVERFINE GO-2000A\_V1 SYSTEM V2.00.446  
 Humidity:65.0%  
 Test Distance:7.200m [K=1.0000]  
 Remarks:



**AAI Figure**

Test:U:120.42V I:0.4071A P:48.716W PF:0.9936 Freq:59.98Hz UTHDi:0.00% ITHDi:0.00% KDisp:0 Lamp Flux:6175.46x1 lm		
NAME: BPL2-1212X603-50W-P-TCP 3500K	TYPE:	WEIGHT:
SPEC.:	DIM.:	SERIAL No.:
MFR.: EVERFINE	SUR.: 1.155*0.545	Shielding Angle:



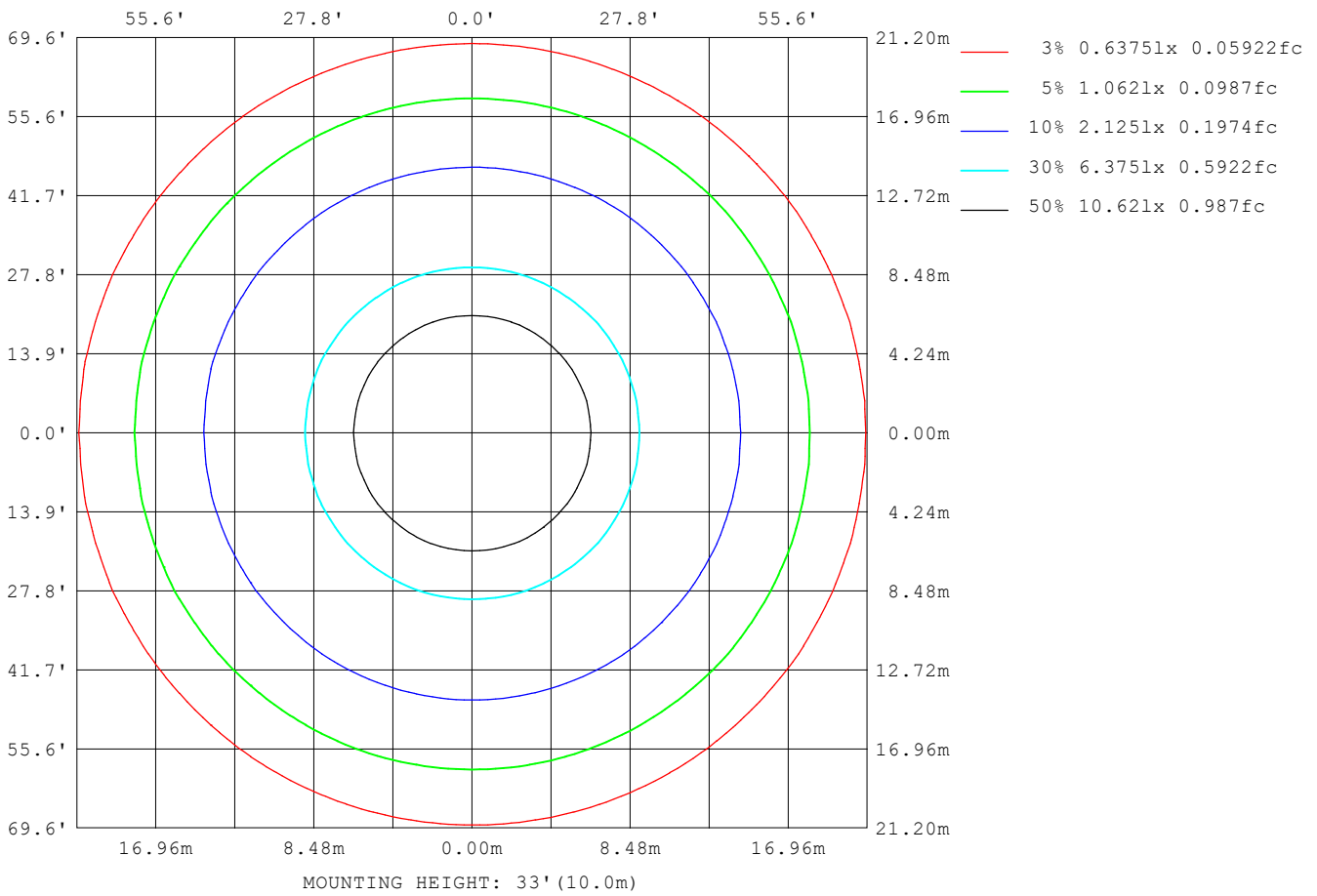
Note:The Curves indicate the illuminated area and the average illumination when the luminaire is at different distance.

H(β) Range:-90 - 90DEG  
H(β) Interval: 1.0DEG  
Test Speed: HIGH  
Temperature:25.3DEG  
Operators:DAMIN  
Test Date:2023-06-22

V(B) Range:-80 - 80DEG  
V(B) Interval: 5.0DEG  
Test System:EVERFINE GO-2000A\_V1 SYSTEM V2.00.446  
Humidity:65.0%  
Test Distance:7.200m [K=1.0000]  
Remarks:

ISOLUX DIAGRAM

Test:U:120.42V I:0.4071A P:48.716W PF:0.9936 Freq:59.98Hz UTHDi:0.00% ITHDi:0.00% KDisp:0 Lamp Flux:6175.46x1 lm		
NAME: BPL2-1212X603-50W-P-TCP 3500K	TYPE:	WEIGHT:
SPEC.:	DIM.:	SERIAL No.:
MFR.: EVERFINE	SUR.: 1.155*0.545	Shielding Angle:



H( $\beta$ ) Range:-90 - 90DEG  
H( $\beta$ ) Interval: 1.0DEG  
Test Speed: HIGH  
Temperature:25.3DEG  
Operators:DAMIN  
Test Date:2023-06-22

V(B) Range:-80 - 80DEG  
V(B) Interval: 5.0DEG  
Test System:EVERFINE GO-2000A\_V1 SYSTEM V2.00.446  
Humidity:65.0%  
Test Distance:7.200m [K=1.0000]  
Remarks:

## LED Avg.L Report

Test:U:120.42V I:0.4071A P:48.716W PF:0.9936 Freq:59.98Hz UTHDi:0.00% ITHDi:0.00% KDisp:0 Lamp Flux:6175.46x1 lm		
NAME: BPL2-1212X603-50W-P-TCP 3500K	TYPE:	WEIGHT:
SPEC.:	DIM.:	SERIAL No.:
MFR.: EVERFINE	SUR.: 1.155*0.545	Shielding Angle:

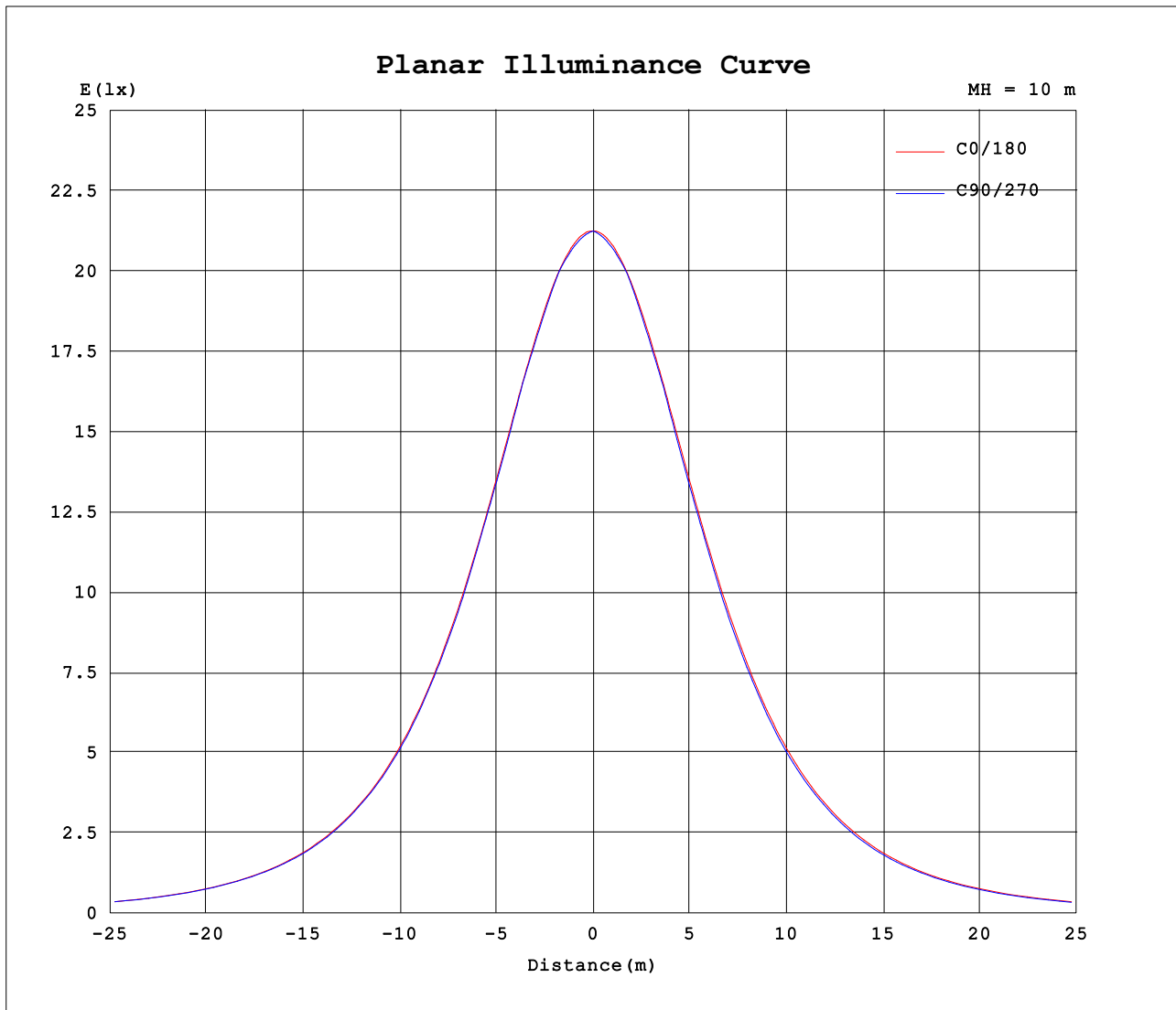
AvgL	cd/m2
L_0~180 (65) av	2955
L_0~180 (75) av	2596
L_0~180 (85) av	1685
L_90~270 (65) av	2881
L_90~270 (75) av	2546
L_90~270 (85) av	0
L_45 (65) av	2915
L_45 (75) av	2562
L_45 (85) av	1218

Standard: GB/T 29293-2012

H( $\beta$ ) Range:-90 - 90DEG  
H( $\beta$ ) Interval: 1.0DEG  
Test Speed: HIGH  
Temperature:25.3DEG  
Operators:DAMIN  
Test Date:2023-06-22

V(B) Range:-80 - 80DEG  
V(B) Interval: 5.0DEG  
Test System:EVERFINE GO-2000A\_V1 SYSTEM V2.00.446  
Humidity:65.0%  
Test Distance:7.200m [K=1.0000]  
Remarks:

## Planar Illuminance Curve



H( $\beta$ ) Range:-90 - 90DEG  
H( $\beta$ ) Interval: 1.0DEG  
Test Speed: HIGH  
Temperature:25.3DEG  
Operators:DAMIN  
Test Date:2023-06-22

V(B) Range:-80 - 80DEG  
V(B) Interval: 5.0DEG  
Test System:EVERFINE GO-2000A\_V1 SYSTEM V2.00.446  
Humidity:65.0%  
Test Distance:7.200m [K=1.0000]  
Remarks:





LUMINOUS DISTRIBUTION INTENSITY DATA

Test:U:120.42V I:0.4071A P:48.716W PF:0.9936 Freq:59.98Hz UTHDi:0.00% ITHDi:0.00% KDisp:0 Lamp Flux:6175.46x1 lm		
NAME: BPL2-1212X603-50W-P-TCP 3500K	TYPE:	WEIGHT:
SPEC.:	DIM.:	SERIAL No.:
MFR.: EVERFINE	SUR.: 1.155*0.545	Shielding Angle:

Table--3

UNIT: cd

C (DEG) γ (DEG)	190	195	200	205	210	215	220	225	230	235	240	245	250	255	260	265	270	275	280
0	2125	2125	2125	2125	2125	2125	2125	2125	2125	2125	2125	2125	2125	2125	2125	2125	2125	2125	2125
5	2112	2110	2109	2108	2107	2107	2106	2105	2105	2105	2105	2105	2105	2105	2105	2105	2105	2105	2105
10	2082	2080	2078	2077	2076	2077	2077	2078	2078	2079	2080	2081	2082	2083	2084	2085	2085	2086	2085
15	2036	2034	2033	2033	2034	2036	2038	2037	2034	2032	2031	2030	2029	2029	2029	2029	2030	2030	2031
20	1975	1973	1974	1976	1978	1974	1971	1969	1968	1969	1969	1970	1971	1972	1973	1974	1975	1974	1974
25	1898	1898	1902	1900	1896	1894	1894	1895	1898	1895	1892	1889	1888	1886	1886	1886	1886	1887	1887
30	1808	1810	1810	1804	1804	1806	1808	1802	1798	1795	1795	1795	1795	1796	1797	1797	1798	1798	1799
35	1702	1706	1701	1700	1704	1699	1693	1691	1691	1693	1689	1686	1683	1682	1682	1681	1681	1682	1683
40	1585	1584	1584	1589	1581	1575	1574	1574	1568	1565	1563	1563	1563	1563	1564	1565	1565	1565	1565
45	1454	1453	1460	1453	1446	1447	1439	1434	1434	1435	1432	1428	1426	1424	1423	1423	1423	1423	1424
50	1307	1312	1312	1303	1301	1294	1292	1293	1286	1282	1280	1279	1279	1279	1280	1280	1281	1281	1281
55	1147	1158	1146	1142	1137	1137	1132	1127	1125	1126	1123	1120	1117	1116	1115	1115	1115	1116	1117
60	976	975	973	969	969	963	961	960	955	952	951	950	949	949	949	949	950	949	950
65	799	793	791	791	787	786	782	780	779	778	775	772	770	769	768	767	767	768	769
70	609	608	608	606	604	603	603	599	596	593	591	588	587	586	585	585	585	586	587
75	428	428	427	426	425	423	420	416	415	415	414	413	412	411	410	410	410	411	412
80	260	259	259	257	254	254	254	253	250	248	245	242	240	238	236	235	235	236	237
85	109	108	109	109	106	92.7	79.1	65.7	52.9	41.2	30.7	21.6	14.0	7.93	3.55	0.89	0.00	0.89	3.56
90	0.00	0.00	0.00	0.00	0.00	0.00	0.00	0.00	0.00	0.00	0.00	0.00	0.00	0.00	0.00	0.00	0.00	0.00	0.00

H(β) Range:-90 - 90DEG  
H(β) Interval: 1.0DEG  
Test Speed: HIGH  
Temperature:25.3DEG  
Operators:DAMIN  
Test Date:2023-06-22

V(B) Range:-80 - 80DEG  
V(B) Interval: 5.0DEG  
Test System:EVERFINE GO-2000A\_V1 SYSTEM V2.00.446  
Humidity:65.0%  
Test Distance:7.200m [K=1.0000]  
Remarks:





Photometric Data Table [cd]

G/C	0.0	5.0	10.0	15.0	20.0	25.0	30.0	35.0	40.0	45.0
0.0	2125	2125	2125	2125	2125	2125	2125	2125	2125	2125
2.5	2124	2123	2122	2122	2121	2121	2120	2120	2119	2119
5.0	2118	2117	2115	2114	2113	2112	2112	2111	2110	2110
7.5	2107	2105	2104	2102	2101	2100	2100	2099	2099	2100
10.0	2093	2091	2089	2087	2086	2086	2085	2086	2086	2087
12.5	2074	2071	2069	2068	2067	2067	2068	2069	2070	2072
15.0	2051	2048	2045	2044	2045	2045	2047	2049	2052	2050
17.5	2024	2020	2018	2017	2018	2020	2023	2026	2021	2019
20.0	1993	1988	1986	1987	1988	1992	1994	1990	1987	1986
22.5	1957	1953	1951	1952	1955	1960	1955	1952	1951	1950
25.0	1918	1913	1912	1913	1918	1917	1913	1912	1912	1913
27.5	1875	1870	1869	1872	1878	1871	1868	1869	1871	1874
30.0	1827	1822	1822	1826	1827	1823	1822	1823	1826	1822
32.5	1776	1771	1772	1778	1774	1771	1772	1776	1771	1768
35.0	1721	1716	1718	1725	1718	1716	1720	1717	1714	1714
37.5	1662	1658	1661	1664	1658	1659	1661	1657	1656	1659
40.0	1599	1595	1600	1599	1596	1600	1596	1595	1597	1599
42.5	1534	1530	1536	1532	1531	1533	1530	1532	1534	1529
45.0	1465	1461	1469	1462	1464	1462	1462	1467	1461	1458
47.5	1392	1389	1395	1389	1393	1389	1393	1391	1387	1387
50.0	1317	1314	1318	1314	1315	1315	1318	1313	1312	1314
52.5	1238	1236	1237	1237	1235	1239	1236	1234	1237	1233
55.0	1156	1154	1154	1156	1154	1158	1153	1155	1152	1150
57.5	1070	1071	1068	1069	1072	1070	1070	1069	1068	1069
60.0	983.2	984.2	980.9	981.6	986.9	982.0	984.0	981.5	983.4	984.2
62.5	892.9	896.4	892.2	892.9	893.8	894.2	892.8	894.5	895.9	892.1
65.0	801.3	804.2	801.5	804.6	801.3	802.0	802.8	805.7	802.2	800.9
67.5	707.9	709.6	707.4	710.6	710.2	709.6	713.7	710.6	709.6	710.5
70.0	615.1	614.9	614.5	614.8	615.4	619.4	617.4	617.2	617.8	617.6
72.5	521.7	521.1	523.0	520.0	521.6	523.5	523.4	525.3	525.7	525.5
75.0	430.6	428.5	424.0	422.3	426.7	428.3	432.0	434.6	435.2	434.7
77.5	342.4	332.8	325.0	329.5	333.0	338.5	343.8	346.2	348.0	349.7
80.0	257.2	236.8	234.2	241.0	248.0	255.3	259.8	264.5	266.9	267.4
82.5	174.8	149.7	156.3	163.8	172.6	179.6	184.6	186.8	187.0	185.9
85.0	97.77	82.66	90.67	99.90	107.2	110.7	111.0	98.10	84.51	70.79
87.5	32.40	38.94	42.70	44.00	31.22	16.15	0	0	0	0
90.0	10.12	0	0	0	0	0	0	0	0	0
G/C	50.0	55.0	60.0	65.0	70.0	75.0	80.0	85.0	90.0	95.0
0.0	2125	2125	2125	2125	2125	2125	2125	2125	2125	2125
2.5	2118	2118	2118	2117	2117	2117	2117	2117	2117	2117
5.0	2110	2109	2109	2109	2109	2109	2109	2108	2108	2108
7.5	2100	2100	2100	2100	2100	2101	2100	2100	2100	2100
10.0	2087	2089	2090	2090	2091	2092	2092	2092	2092	2091
12.5	2074	2074	2072	2071	2069	2068	2067	2066	2066	2066
15.0	2048	2046	2044	2043	2043	2042	2041	2041	2040	2040
17.5	2017	2016	2016	2015	2015	2015	2015	2015	2015	2014
20.0	1985	1985	1986	1987	1988	1988	1989	1989	1989	1988
22.5	1951	1953	1955	1954	1951	1949	1948	1947	1946	1946
25.0	1916	1914	1911	1909	1907	1906	1905	1904	1904	1903
27.5	1869	1866	1865	1864	1863	1863	1862	1862	1861	1860
30.0	1819	1818	1818	1818	1819	1819	1820	1819	1819	1818
32.5	1768	1769	1770	1772	1768	1766	1764	1762	1761	1760
35.0	1716	1719	1715	1711	1709	1707	1705	1704	1704	1703
37.5	1660	1655	1652	1650	1649	1648	1647	1647	1646	1645
40.0	1593	1590	1589	1589	1589	1589	1589	1589	1588	1587
42.5	1526	1525	1525	1525	1527	1525	1522	1520	1518	1516
45.0	1458	1459	1457	1454	1452	1450	1448	1447	1446	1445
47.5	1389	1385	1382	1380	1379	1378	1377	1376	1375	1374
50.0	1310	1308	1306	1306	1306	1306	1305	1305	1304	1303
52.5	1230	1230	1231	1232	1229	1226	1224	1223	1221	1220
55.0	1151	1153	1151	1147	1145	1142	1141	1140	1139	1138
57.5	1071	1066	1063	1061	1060	1058	1057	1057	1056	1055
60.0	980.6	977.8	976.3	975.3	974.9	974.3	974.2	973.7	972.9	972.0
62.5	890.5	889.6	889.6	889.6	887.5	885.6	884.4	883.0	882.1	881.3
65.0	801.1	801.3	799.3	797.4	795.9	794.4	793.2	792.0	791.2	790.3
67.5	709.7	708.6	707.1	705.6	704.3	703.1	702.1	701.1	700.3	699.3
70.0	616.9	616.3	615.3	614.2	612.8	612.0	611.0	610.1	609.4	608.4
72.5	525.1	524.6	523.7	524.2	523.6	523.4	522.7	522.0	521.3	520.4
75.0	435.3	436.7	437.1	437.1	436.3	435.7	434.8	434.0	433.3	432.5
77.5	350.8	351.2	350.9	350.3	349.2	348.0	346.9	345.9	345.2	344.6
80.0	267.1	266.3	265.1	263.7	262.2	260.5	259.0	257.9	257.1	256.7
82.5	180.9	170.1	160.2	151.3	143.7	137.3	132.7	129.8	128.5	129.1
85.0	57.48	45.03	33.73	23.78	15.40	8.721	3.894	0.9754	0	0.9707

H( $\beta$ ) Range:-90 - 90DEG  
 H( $\beta$ ) Interval: 1.0DEG  
 Test Speed: HIGH  
 Temperature:25.3DEG  
 Operators:DAMIN  
 Test Date:2023-06-22

V(B) Range:-80 - 80DEG  
 V(B) Interval: 5.0DEG  
 Test System:EVERFINE GO-2000A\_V1 SYSTEM V2.00.446  
 Humidity:65.0%  
 Test Distance:7.200m [K=1.0000]  
 Remarks:

Photometric Data Table [cd]

87.5	0	0	0	0	0	0	0	0	0	0
90.0	0	0	0	0	0	0	0	0	0	0
G/C	100.0	105.0	110.0	115.0	120.0	125.0	130.0	135.0	140.0	145.0
0.0	2125	2125	2125	2125	2125	2125	2125	2125	2125	2125
2.5	2116	2117	2117	2117	2117	2117	2117	2118	2118	2118
5.0	2108	2108	2108	2108	2108	2108	2108	2108	2108	2108
7.5	2099	2099	2098	2098	2097	2097	2096	2096	2096	2096
10.0	2090	2090	2089	2087	2086	2084	2083	2082	2081	2080
12.5	2066	2066	2066	2066	2067	2069	2068	2066	2064	2062
15.0	2040	2039	2039	2039	2039	2040	2041	2043	2044	2041
17.5	2014	2012	2011	2011	2010	2009	2010	2011	2012	2015
20.0	1987	1985	1984	1982	1980	1978	1977	1976	1977	1979
22.5	1946	1946	1947	1948	1949	1946	1943	1941	1940	1940
25.0	1902	1902	1902	1903	1904	1906	1908	1904	1901	1899
27.5	1859	1858	1858	1856	1857	1858	1860	1864	1860	1856
30.0	1816	1814	1812	1810	1808	1808	1808	1811	1815	1811
32.5	1760	1760	1761	1763	1760	1757	1756	1756	1758	1764
35.0	1702	1702	1701	1702	1704	1706	1702	1700	1700	1703
37.5	1644	1643	1642	1641	1641	1643	1646	1643	1641	1642
40.0	1586	1584	1582	1580	1578	1578	1579	1582	1580	1578
42.5	1516	1517	1518	1519	1516	1513	1512	1513	1516	1514
45.0	1445	1444	1445	1446	1448	1448	1445	1443	1443	1448
47.5	1373	1372	1371	1371	1372	1374	1377	1372	1371	1372
50.0	1301	1299	1298	1296	1295	1295	1297	1301	1297	1295
52.5	1220	1220	1221	1221	1219	1217	1217	1219	1224	1218
55.0	1137	1137	1137	1137	1138	1139	1136	1135	1137	1141
57.5	1054	1053	1052	1052	1052	1053	1055	1053	1052	1055
60.0	971.0	969.5	968.2	966.9	965.9	965.6	966.1	967.9	966.4	966.1
62.5	881.0	880.8	881.2	882.1	880.2	878.7	877.8	877.7	879.4	878.0
65.0	789.9	789.4	789.4	789.8	790.3	791.5	790.0	788.5	788.3	789.0
67.5	698.7	698.1	697.7	697.8	697.8	698.3	699.6	700.2	698.2	696.8
70.0	607.6	606.9	606.2	606.2	605.9	606.3	607.2	608.0	609.0	606.2
72.5	519.5	518.7	517.4	516.5	514.6	514.9	515.6	516.3	517.0	516.2
75.0	431.9	431.5	430.9	430.4	429.4	428.0	426.3	426.0	426.7	425.9
77.5	344.4	344.5	344.6	344.6	344.4	343.9	343.2	342.2	340.1	338.1
80.0	256.9	257.5	258.4	259.1	259.7	260.4	260.9	261.2	260.6	257.8
82.5	131.6	135.7	141.6	148.5	156.6	166.1	176.2	181.1	182.1	181.6
85.0	3.861	8.621	15.18	23.34	32.97	43.96	55.99	68.89	82.13	95.14
87.5	0	0	0	0	0	0	0	0	0	0
90.0	0	0	0	0	0	0	0	0	0	0
G/C	150.0	155.0	160.0	165.0	170.0	175.0	180.0	185.0	190.0	195.0
0.0	2125	2125	2125	2125	2125	2125	2125	2125	2125	2125
2.5	2119	2119	2120	2120	2121	2121	2122	2121	2120	2120
5.0	2109	2109	2110	2111	2112	2113	2115	2113	2112	2110
7.5	2096	2096	2097	2098	2100	2101	2103	2101	2099	2097
10.0	2080	2080	2080	2081	2083	2085	2088	2084	2082	2080
12.5	2060	2060	2060	2060	2062	2064	2068	2064	2061	2059
15.0	2038	2036	2035	2035	2037	2039	2043	2039	2036	2034
17.5	2012	2009	2007	2007	2008	2011	2016	2011	2007	2005
20.0	1982	1979	1976	1975	1976	1979	1984	1978	1975	1973
22.5	1942	1946	1941	1939	1939	1942	1948	1942	1938	1938
25.0	1900	1903	1903	1900	1899	1902	1908	1902	1898	1898
27.5	1855	1857	1861	1857	1855	1858	1864	1857	1854	1855
30.0	1808	1807	1811	1811	1808	1810	1817	1810	1808	1810
32.5	1758	1756	1758	1761	1757	1758	1766	1758	1757	1760
35.0	1707	1702	1701	1706	1702	1703	1711	1703	1702	1706
37.5	1647	1645	1642	1646	1645	1645	1653	1645	1645	1647
40.0	1581	1587	1581	1583	1584	1583	1591	1583	1585	1584
42.5	1514	1520	1517	1516	1519	1517	1526	1518	1521	1520
45.0	1444	1447	1451	1447	1452	1448	1457	1450	1454	1453
47.5	1374	1373	1381	1375	1378	1376	1385	1378	1382	1384
50.0	1299	1298	1302	1301	1301	1301	1309	1303	1307	1312
52.5	1218	1221	1221	1225	1222	1222	1230	1225	1229	1237
55.0	1137	1139	1138	1146	1140	1141	1149	1144	1147	1158
57.5	1056	1053	1055	1058	1056	1057	1065	1060	1063	1066
60.0	970.8	967.8	969.8	969.4	970.9	971.0	977.5	973.9	976.5	975.3
62.5	878.7	882.8	879.1	879.8	884.0	883.4	889.0	885.9	888.8	884.0
65.0	787.9	790.2	788.5	789.7	795.4	792.0	797.5	794.7	799.0	793.5
67.5	697.2	695.5	698.1	694.9	697.9	698.6	705.4	701.2	702.7	700.3
70.0	603.7	601.7	600.4	598.3	600.6	605.1	612.2	608.6	608.8	608.0
72.5	512.3	508.0	504.1	504.3	503.1	510.7	520.1	517.1	517.8	519.6
75.0	423.2	417.9	411.6	407.6	405.3	416.1	429.5	429.4	427.5	428.0
77.5	335.9	331.4	324.1	316.0	313.0	319.8	342.6	343.0	343.1	341.3

H(β) Range:-90 - 90DEG  
 H(β) Interval: 1.0DEG  
 Test Speed: HIGH  
 Temperature:25.3DEG  
 Operators:DAMIN  
 Test Date:2023-06-22

V(B) Range:-80 - 80DEG  
 V(B) Interval: 5.0DEG  
 Test System:EVERFINE GO-2000A\_V1 SYSTEM V2.00.446  
 Humidity:65.0%  
 Test Distance:7.200m [K=1.0000]  
 Remarks:

Photometric Data Table [cd]

80.0	252.8	248.9	242.5	233.2	224.7	224.7	255.0	258.9	259.9	259.1
82.5	179.4	174.5	167.4	159.7	147.9	140.6	169.3	181.2	181.6	181.5
85.0	107.4	107.2	103.4	95.63	85.77	74.39	90.24	109.2	109.4	108.2
87.5	0	15.61	29.92	41.37	38.40	34.25	28.60	45.48	45.76	43.81
90.0	0	0	0	0	0	0	9.537	0	0	0
G/C	200.0	205.0	210.0	215.0	220.0	225.0	230.0	235.0	240.0	245.0
0.0	2125	2125	2125	2125	2125	2125	2125	2125	2125	2125
2.5	2119	2118	2118	2117	2117	2116	2116	2116	2115	2115
5.0	2109	2108	2107	2107	2106	2105	2105	2105	2105	2105
7.5	2096	2094	2094	2093	2093	2092	2092	2093	2093	2093
10.0	2078	2077	2076	2077	2077	2078	2078	2079	2080	2081
12.5	2057	2057	2057	2058	2058	2060	2063	2063	2061	2059
15.0	2033	2033	2034	2036	2038	2037	2034	2032	2031	2030
17.5	2005	2006	2008	2010	2006	2004	2002	2001	2000	2000
20.0	1974	1976	1978	1974	1971	1969	1968	1969	1969	1970
22.5	1939	1943	1938	1935	1933	1933	1934	1935	1937	1936
25.0	1902	1900	1896	1894	1894	1895	1898	1895	1892	1889
27.5	1860	1854	1851	1851	1853	1855	1850	1846	1843	1842
30.0	1810	1804	1804	1806	1808	1802	1798	1795	1795	1795
32.5	1756	1754	1754	1759	1751	1747	1745	1745	1745	1747
35.0	1701	1700	1704	1699	1693	1691	1691	1693	1689	1686
37.5	1643	1645	1645	1638	1634	1634	1634	1629	1626	1625
40.0	1584	1589	1581	1575	1574	1574	1568	1565	1563	1563
42.5	1522	1523	1514	1511	1511	1504	1501	1500	1500	1501
45.0	1460	1453	1446	1447	1439	1434	1434	1435	1432	1428
47.5	1391	1379	1376	1371	1366	1364	1366	1360	1356	1354
50.0	1312	1303	1301	1294	1292	1293	1286	1282	1280	1279
52.5	1230	1225	1219	1216	1217	1210	1206	1204	1204	1204
55.0	1146	1142	1137	1137	1132	1127	1125	1126	1123	1120
57.5	1060	1055	1055	1051	1046	1044	1045	1040	1037	1035
60.0	972.6	968.6	968.9	962.7	960.8	959.6	955.4	952.4	950.8	949.7
62.5	881.2	882.8	877.5	874.8	873.6	869.5	866.9	865.3	865.0	864.7
65.0	791.1	790.7	786.8	786.1	782.2	780.0	779.0	777.8	774.9	772.1
67.5	702.5	697.2	696.6	693.4	692.0	691.7	688.5	685.1	682.5	679.9
70.0	607.9	605.9	603.8	602.9	602.6	599.2	595.8	593.0	590.5	588.3
72.5	515.5	514.2	513.4	512.9	510.2	507.2	504.0	501.4	498.8	498.5
75.0	426.5	425.7	424.9	422.6	419.6	416.4	414.7	414.6	413.7	412.9
77.5	340.9	340.1	337.7	334.5	332.9	333.0	332.1	330.9	329.1	327.5
80.0	259.0	256.9	254.3	254.5	254.1	252.6	250.3	247.7	244.8	242.4
82.5	179.5	179.9	179.6	178.4	176.3	173.1	166.6	155.7	146.0	137.7
85.0	109.4	108.7	106.1	92.75	79.12	65.69	52.93	41.23	30.74	21.65
87.5	30.70	15.65	0	0	0	0	0	0	0	0
90.0	0	0	0	0	0	0	0	0	0	0
G/C	250.0	255.0	260.0	265.0	270.0	275.0	280.0	285.0	290.0	295.0
0.0	2125	2125	2125	2125	2125	2125	2125	2125	2125	2125
2.5	2115	2115	2115	2115	2115	2115	2115	2115	2116	2116
5.0	2105	2105	2105	2105	2105	2105	2105	2106	2106	2106
7.5	2094	2094	2094	2095	2095	2095	2095	2095	2095	2096
10.0	2082	2083	2084	2085	2085	2086	2085	2085	2085	2084
12.5	2058	2057	2057	2057	2058	2058	2058	2060	2061	2063
15.0	2029	2029	2029	2029	2030	2030	2031	2031	2033	2033
17.5	2000	2001	2001	2002	2002	2002	2003	2003	2003	2004
20.0	1971	1972	1973	1974	1975	1974	1974	1975	1974	1974
22.5	1933	1931	1931	1930	1931	1931	1932	1934	1936	1939
25.0	1888	1886	1886	1886	1886	1887	1887	1889	1891	1893
27.5	1842	1841	1841	1841	1842	1842	1843	1844	1845	1846
30.0	1795	1796	1797	1797	1798	1798	1799	1799	1799	1799
32.5	1744	1742	1740	1740	1740	1740	1742	1744	1747	1751
35.0	1683	1682	1682	1681	1681	1682	1683	1684	1686	1690
37.5	1623	1623	1623	1623	1623	1623	1624	1624	1626	1628
40.0	1563	1563	1564	1565	1565	1565	1565	1564	1565	1565
42.5	1499	1496	1495	1494	1494	1494	1495	1497	1500	1503
45.0	1426	1424	1423	1423	1423	1423	1424	1425	1427	1430
47.5	1352	1352	1351	1351	1352	1352	1352	1353	1354	1356
50.0	1279	1279	1280	1280	1281	1281	1281	1281	1282	1282
52.5	1202	1200	1198	1198	1199	1199	1200	1202	1205	1208
55.0	1117	1116	1115	1115	1115	1116	1117	1118	1120	1124
57.5	1033	1033	1032	1032	1033	1032	1033	1034	1036	1038
60.0	949.2	949.1	949.1	949.0	949.8	949.5	950.1	950.6	951.1	952.3
62.5	862.1	860.2	859.0	858.2	858.6	858.8	860.0	861.7	863.8	866.7
65.0	770.3	768.6	767.6	767.1	767.4	767.8	768.9	770.3	772.2	774.6
67.5	678.5	677.2	676.3	675.9	676.3	676.8	677.8	679.0	680.8	683.1
70.0	586.8	585.9	585.0	584.8	585.1	585.8	586.7	587.9	589.7	591.9

H(β) Range:-90 - 90DEG  
 H(β) Interval: 1.0DEG  
 Test Speed: HIGH  
 Temperature:25.3DEG  
 Operators:DAMIN  
 Test Date:2023-06-22

V(B) Range:-80 - 80DEG  
 V(B) Interval: 5.0DEG  
 Test System:EVERFINE GO-2000A\_V1 SYSTEM V2.00.446  
 Humidity:65.0%  
 Test Distance:7.200m [K=1.0000]  
 Remarks:

Photometric Data Table [cd]

72.5	498.1	497.9	497.4	497.4	497.6	498.2	498.9	499.8	501.1	502.2
75.0	411.9	411.2	410.4	410.0	410.2	410.7	411.7	412.9	414.5	416.0
77.5	325.9	324.5	323.3	322.7	322.7	323.3	324.4	326.1	328.0	330.1
80.0	240.1	237.9	236.3	235.4	235.3	235.8	237.2	239.3	241.7	244.3
82.5	130.7	124.9	120.8	118.4	117.6	118.6	121.3	125.7	131.6	138.9
85.0	14.01	7.934	3.546	0.8899	0	0.8914	3.560	7.984	14.10	21.83
87.5	0	0	0	0	0	0	0	0	0	0
90.0	0	0	0	0	0	0	0	0	0	0
G/C	300.0	305.0	310.0	315.0	320.0	325.0	330.0	335.0	340.0	345.0
0.0	2125	2125	2125	2125	2125	2125	2125	2125	2125	2125
2.5	2116	2117	2117	2118	2118	2119	2119	2120	2120	2121
5.0	2106	2107	2107	2108	2108	2109	2110	2111	2112	2113
7.5	2095	2096	2096	2096	2096	2096	2097	2098	2099	2101
10.0	2084	2083	2082	2082	2081	2082	2082	2083	2084	2085
12.5	2064	2067	2067	2066	2065	2064	2064	2064	2064	2065
15.0	2035	2037	2040	2044	2046	2044	2042	2041	2041	2042
17.5	2005	2006	2008	2011	2014	2019	2017	2015	2014	2014
20.0	1973	1974	1975	1976	1978	1982	1988	1986	1984	1983
22.5	1941	1940	1939	1941	1941	1943	1948	1954	1950	1948
25.0	1896	1900	1903	1901	1901	1902	1905	1911	1913	1910
27.5	1848	1850	1855	1860	1859	1858	1860	1864	1872	1867
30.0	1799	1801	1803	1807	1813	1812	1812	1815	1821	1822
32.5	1750	1750	1751	1753	1757	1764	1762	1762	1767	1773
35.0	1694	1699	1697	1698	1700	1705	1709	1708	1711	1719
37.5	1630	1635	1642	1642	1641	1643	1650	1650	1651	1658
40.0	1567	1569	1574	1581	1581	1581	1584	1590	1588	1594
42.5	1503	1503	1506	1510	1518	1517	1517	1523	1523	1526
45.0	1434	1437	1437	1439	1444	1452	1449	1451	1456	1456
47.5	1359	1363	1368	1368	1370	1376	1380	1378	1385	1384
50.0	1283	1286	1289	1295	1295	1297	1305	1304	1307	1308
52.5	1208	1208	1210	1214	1220	1219	1223	1229	1227	1231
55.0	1128	1131	1131	1132	1135	1140	1140	1148	1146	1151
57.5	1041	1045	1051	1051	1051	1054	1057	1060	1064	1064
60.0	954.2	956.8	960.9	966.8	967.2	967.5	971.5	971.8	979.5	976.4
62.5	867.7	869.0	871.4	875.0	880.3	881.2	881.3	884.5	886.5	887.7
65.0	777.7	780.9	782.2	784.0	787.4	792.9	792.0	793.3	794.3	800.0
67.5	685.7	688.5	691.1	693.6	695.0	698.4	704.1	701.6	703.7	706.6
70.0	594.3	596.6	599.0	601.5	603.8	605.6	608.8	612.6	610.7	611.7
72.5	503.2	505.4	507.8	510.3	512.6	514.4	516.1	519.2	520.4	520.2
75.0	417.4	418.4	418.9	420.4	423.1	425.2	426.7	428.1	431.0	430.0
77.5	332.1	334.0	335.5	336.6	336.9	338.4	340.5	341.4	342.8	345.5
80.0	247.2	250.1	252.8	255.3	257.0	257.7	257.6	258.9	259.6	260.7
82.5	147.4	157.3	168.2	174.8	178.1	180.4	181.7	181.6	181.0	181.4
85.0	31.05	41.64	53.43	66.34	79.83	93.54	106.8	109.2	109.9	108.9
87.5	0	0	0	0	0	0	0	15.69	30.60	43.62
90.0	0	0	0	0	0	0	0	0	0	0
G/C	350.0	355.0								
0.0	2125	2125								
2.5	2122	2123								
5.0	2115	2116								
7.5	2103	2105								
10.0	2088	2090								
12.5	2068	2071								
15.0	2044	2047								
17.5	2016	2019								
20.0	1984	1987								
22.5	1949	1952								
25.0	1909	1912								
27.5	1866	1868								
30.0	1819	1821								
32.5	1769	1769								
35.0	1714	1714								
37.5	1657	1656								
40.0	1596	1593								
42.5	1533	1528								
45.0	1466	1459								
47.5	1392	1387								
50.0	1314	1312								
52.5	1234	1234								
55.0	1151	1153								
57.5	1065	1070								
60.0	977.9	982.8								
62.5	889.5	895.3								

H( $\beta$ ) Range:-90 - 90DEG  
 H( $\beta$ ) Interval: 1.0DEG  
 Test Speed: HIGH  
 Temperature:25.3DEG  
 Operators:DAMIN  
 Test Date:2023-06-22

V(B) Range:-80 - 80DEG  
 V(B) Interval: 5.0DEG  
 Test System:EVERFINE GO-2000A\_V1 SYSTEM V2.00.446  
 Humidity:65.0%  
 Test Distance:7.200m [K=1.0000]  
 Remarks:

**Photometric Data Table [cd]**

65.0	799.2	802.8
67.5	705.2	708.9
70.0	612.8	614.2
72.5	522.9	520.9
75.0	431.7	430.2
77.5	343.3	342.8
80.0	260.1	259.7
82.5	182.5	181.3
85.0	109.1	109.0
87.5	46.55	46.00
90.0	0	0

H( $\beta$ ) Range:-90 - 90DEG  
H( $\beta$ ) Interval: 1.0DEG  
Test Speed: HIGH  
Temperature:25.3DEG  
Operators:DAMIN  
Test Date:2023-06-22

V(B) Range:-80 - 80DEG  
V(B) Interval: 5.0DEG  
Test System:EVERFINE GO-2000A\_V1 SYSTEM V2.00.446  
Humidity:65.0%  
Test Distance:7.200m [K=1.0000]  
Remarks: